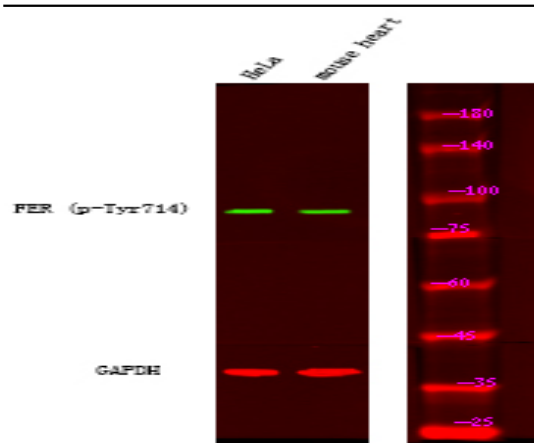


## FER (Phospho Tyr714) Rabbit pAb

<b>Catalog No :</b>	YP1865
<b>Reactivity :</b>	Human;Mouse;Rat
<b>Applications :</b>	IHC;WB
<b>Target :</b>	FER
<b>Fields :</b>	>>Adherens junction
<b>Gene Name :</b>	FER TYK3
<b>Protein Name :</b>	Tyrosine-protein kinase Fer (EC 2.7.10.2) (Feline encephalitis virus-related kinase FER) (Fujinami poultry sarcoma/Feline sarcoma-related protein Fer) (Proto-oncogene c-Fer) (Tyrosine kinase 3) (p94-F
<b>Sequence :</b>	P16591
<b>Human Gene Id :</b>	2241
<b>Human Swiss Prot No :</b>	P16591
<b>Mouse Gene Id :</b>	14158
<b>Mouse Swiss Prot No :</b>	P70451
<b>Rat Swiss Prot No :</b>	P09760
<b>Immunogen :</b>	Synthesized peptide derived from human FER (Phospho Tyr714)
<b>Specificity :</b>	This antibody detects endogenous levels of FER (Phospho Tyr714) Rabbit pAb at Human, Mouse,Rat
<b>Formulation :</b>	Liquid in PBS containing 50% glycerol, and 0.02% sodium azide.
<b>Source :</b>	Rabbit,polyclonal
<b>Dilution :</b>	WB 1:500-2000 IHC 1:50-200

<b>Purification :</b>	The antibody was affinity-purified from rabbit serum by affinity-chromatography using specific immunogen.
<b>Concentration :</b>	1 mg/ml
<b>Storage Stability :</b>	-15°C to -25°C/1 year(Do not lower than -25°C)
<b>Observed Band :</b>	85kD
<b>Background :</b>	FER tyrosine kinase(FER) Homo sapiens The protein encoded by this gene is a member of the FPS/FES family of non-transmembrane receptor tyrosine kinases. It regulates cell-cell adhesion and mediates signaling from the cell surface to the cytoskeleton via growth factor receptors. Alternative splicing results in multiple transcript variants. A related pseudogene has been identified on chromosome X. [provided by RefSeq, Apr 2015],
<b>Function :</b>	catalytic activity:ATP + a [protein]-L-tyrosine = ADP + a [protein]-L-tyrosine phosphate.,function:Tyrosine kinase of the non-receptor type. Probably performs an important function, perhaps in regulatory processes such as cell cycle control.,similarity:Belongs to the protein kinase superfamily. Tyr protein kinase family. Fes/fps subfamily.,similarity:Contains 1 FCH domain.,similarity:Contains 1 protein kinase domain.,similarity:Contains 1 SH2 domain.,subcellular location:Associated with the chromatin.,tissue specificity:Expressed in a variety of lymphoid cell lines.,
<b>Subcellular Location :</b>	Cytoplasm. Cytoplasm, cytoskeleton. Cell membrane; Peripheral membrane protein; Cytoplasmic side. Cell projection. Cell junction. Membrane; Peripheral membrane protein; Cytoplasmic side. Nucleus. Cytoplasm, cell cortex. Associated with the chromatin. Detected on microtubules in polarized and motile vascular endothelial cells. Colocalizes with F-actin at the cell cortex. Colocalizes with PECAM1 and CTNND1 at nascent cell-cell contacts.
<b>Expression :</b>	Isoform 1 is detected in normal colon and in fibroblasts (at protein level). Isoform 3 is detected in normal testis, in colon carcinoma-derived metastases in lung, liver and ovary, and in colon carcinoma and hepato carcinoma cell lines (at protein level). Isoform 3 is not detected in normal colon or in normal fibroblasts (at protein level). Widely expressed.

## Products Images



Western Blot analysis of A431 mouse heart using primary antibody at 1:1000 dilution 4 °C, overnight. Secondary antibody(catalog#:RS23920) was diluted at 1:10000 25 °C 1.5hours