

**ULK1 (Phospho Ser555) rabbit pAb**

<b>Catalog No :</b>	YP1542
<b>Reactivity :</b>	Human;Mouse
<b>Applications :</b>	WB
<b>Target :</b>	ULK1
<b>Fields :</b>	>>Mitophagy - animal;>>Autophagy - animal;>>mTOR signaling pathway;>>AMPK signaling pathway;>>Longevity regulating pathway;>>Alzheimer disease;>>Amyotrophic lateral sclerosis;>>Huntington disease;>>Spinocerebellar ataxia;>>Pathways of neurodegeneration - multiple diseases
<b>Gene Name :</b>	ULK1 KIAA0722
<b>Protein Name :</b>	ULK1 (Ser555)
<b>Human Gene Id :</b>	8408
<b>Human Swiss Prot No :</b>	O75385
<b>Mouse Gene Id :</b>	22241
<b>Mouse Swiss Prot No :</b>	O70405
<b>Immunogen :</b>	Synthesized phospho peptide around human ULK1 (Ser555)
<b>Specificity :</b>	This antibody detects endogenous levels of Human Mouse ULK1 (phospho-Ser555)
<b>Formulation :</b>	Liquid in PBS containing 50% glycerol, 0.5% BSA and 0.02% sodium azide.
<b>Source :</b>	Polyclonal, Rabbit,IgG
<b>Dilution :</b>	WB 1:1000-2000
<b>Purification :</b>	The antibody was affinity-purified from rabbit serum by affinity-chromatography

using specific immunogen.

**Concentration :** 1 mg/ml

**Storage Stability :** -15°C to -25°C/1 year(Do not lower than -25°C)

**Observed Band :** 115kD

**Cell Pathway :** Regulation of autophagy;mTOR;

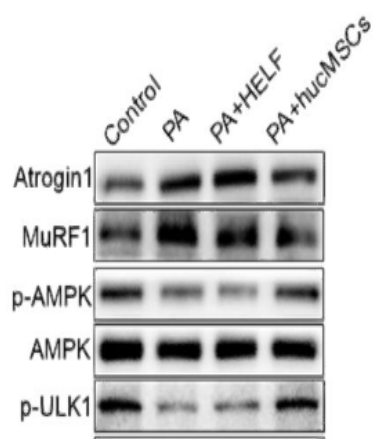
**Function :** catalytic activity:ATP + a protein = ADP + a phosphoprotein.,function:Involved in axon growth. Plays an essential role in neurite extension of cerebellar granule cells.,similarity:Belongs to the protein kinase superfamily. Ser/Thr protein kinase family. APG1/unc-51/ULK1 subfamily.,similarity:Contains 1 protein kinase domain.,subunit:Interacts with GABARAP and GABARAPL2.,tissue specificity:Ubiquitously expressed. Detected in the following adult tissues: skeletal muscle, heart, pancreas, brain, placenta, liver, kidney, and lung.,

**Subcellular Location :** Cytoplasm, cytosol . Preautophagosomal structure . Under starvation conditions, is localized to punctate structures primarily representing the isolation membrane that sequesters a portion of the cytoplasm resulting in the formation of an autophagosome. .

**Expression :** Ubiquitously expressed. Detected in the following adult tissues: skeletal muscle, heart, pancreas, brain, placenta, liver, kidney, and lung.

## Products Images

(A)



Mesenchymal stromal cells ameliorate diabetes-induced muscle atrophy through exosomes by enhancing AMPK/ULK1-mediated autophagy Journal of Cachexia Sarcopenia and Muscle Li Chen WB Mouse tibialis anterior (TA) muscle

Western Blot analysis of various cell lysis(provided by our customer). Primary Antibody was diluted at 1:1000. Secondary antibody(catalog#:RS23920 was diluted at 1:10000

