

FAK (Phospho Ser722) rabbit pAb

Catalog No :	YP1601
Reactivity :	Human;Mouse;Rat
Applications :	WB;ELISA
Target :	FAK
Fields :	>>Endocrine resistance;>>ErbB signaling pathway;>>Chemokine signaling pathway;>>PI3K-Akt signaling pathway;>>Axon guidance;>>VEGF signaling pathway;>>Focal adhesion;>>Leukocyte transendothelial migration;>>Regulation of actin cytoskeleton;>>Growth hormone synthesis, secretion and action;>>Bacterial invasion of epithelial cells;>>Shigellosis;>>Yersinia infection;>>Amoebiasis;>>Human cytomegalovirus infection;>>Human papillomavirus infection;>>Human immunodeficiency virus 1 infection;>>Pathways in cancer;>>Transcriptional misregulation in cancer;>>Proteoglycans in cancer;>>Chemical carcinogenesis - reactive oxygen species;>>Small cell lung cancer;>>Lipid and atherosclerosis;>>Fluid shear stress and atherosclerosis
Gene Name :	PTK2 FAK FAK1
Protein Name :	FAK (Phospho Ser722)
Human Gene Id :	5747
Human Swiss Prot No :	Q05397
Mouse Gene Id :	14083
Mouse Swiss Prot No :	P34152
Rat Gene Id :	25614
Rat Swiss Prot No :	O35346
Immunogen :	Synthesized peptide derived from human FAK (Phospho Ser722)
Specificity :	This antibody detects endogenous levels of Human,Mouse,Rat FAK (Phospho

Ser722)

Formulation : Liquid in PBS containing 50% glycerol, 0.5% BSA and 0.02% sodium azide.

Source : Polyclonal, Rabbit,IgG

Dilution : WB 1:1000-2000 ELISA 1:5000-20000

Purification : The antibody was affinity-purified from rabbit serum by affinity-chromatography using specific immunogen.

Concentration : 1 mg/ml

Storage Stability : -15°C to -25°C/1 year(Do not lower than -25°C)

Observed Band : 125kD

Background : catalytic activity:ATP + a [protein]-L-tyrosine = ADP + a [protein]-L-tyrosine phosphate.,domain:The carboxy-terminal region is the site of focal adhesion targeting (FAT) sequence which mediates the localization of FAK1 to focal adhesions.,domain:The first Pro-rich domain interacts with the SH3 domain of CRK-associated substrate (BCAR1) and CASL.,function:Non-receptor protein-tyrosine kinase implicated in signaling pathways involved in cell motility, proliferation and apoptosis. Activated by tyrosine-phosphorylation in response to either integrin clustering induced by cell adhesion or antibody cross-linking, or via G-protein coupled receptor (GPCR) occupancy by ligands such as bombesin or lysophosphatidic acid, or via LDL receptor occupancy. Plays a potential role in oncogenic transformations resulting in increased kinase activity.,PTM:Phosphorylated on 6 tyrosine residues upon activation.,similarity:Belongs to the protein kinase superfamily. Tyr protein kinase family.,similarity:Belongs to the protein kinase superfamily. Tyr protein kinase family. FAK subfamily.,similarity:Contains 1 FERM domain.,similarity:Contains 1 protein kinase domain.,subcellular location:Constituent of focal adhesions.,subunit:Interacts with CAS family members and with GIT1, SORBS1 and BCAR3. Interacts with RGNEF and SHB (By similarity). Interacts with TGFB111.,tissue specificity:Expressed in all organs tested, in lymphoid cell lines, but most abundantly in brain.,

Function : microtubule cytoskeleton organization, cell morphogenesis, cell morphogenesis involved in differentiation,angiogenesis, blood vessel development, vasculogenesis, neuron migration, vasculature development, protein complex assembly, protein amino acid phosphorylation, phosphorus metabolic process, phosphate metabolic process,cell motion, cytoskeleton organization, microtubule-based process, cell surface receptor linked signal transduction,enzyme linked receptor protein signaling pathway, transmembrane receptor protein tyrosine kinase signaling pathway, signal complex assembly, integrin-mediated signaling pathway, cell-cell

signaling, synaptic transmission, axonogenesis, negative regulation of cell development, regulation of cell morphogenesis involved in differentiation, regulation of neuron projection development, phosphorylation, cell migration, transmission of nerve impulse, central nervo

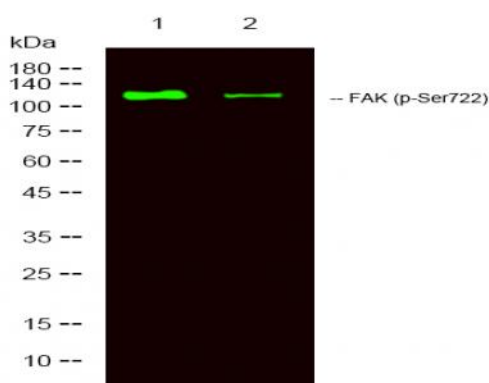
Subcellular Location :

Cell junction, focal adhesion. Cell membrane; Peripheral membrane protein; Cytoplasmic side. Cytoplasm, cell cortex. Cytoplasm, cytoskeleton. Cytoplasm, cytoskeleton, microtubule organizing center, centrosome . Nucleus. Cytoplasm, cytoskeleton, cilium basal body . Constituent of focal adhesions. Detected at microtubules.

Expression :

Detected in B and T-lymphocytes. Isoform 1 and isoform 6 are detected in lung fibroblasts (at protein level). Ubiquitous. Expressed in epithelial cells (at protein level) (PubMed:31630787).

Products Images



Western Blot analysis of 1 MCF-7 treated with LPS, 2 MCF7, using primary antibody at 1:1000 dilution. Secondary antibody (catalog#:RS23920) was diluted at 1:10000