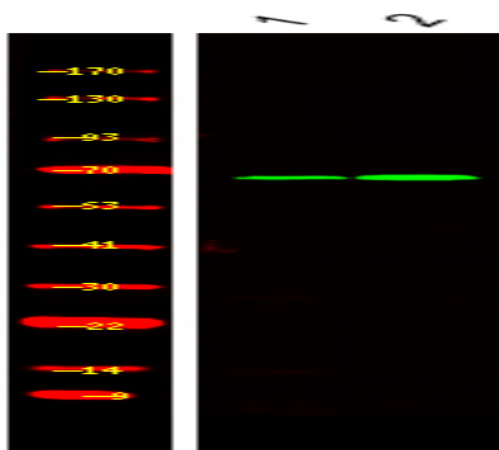


BORA (Phospho Ser497) rabbit pAb

Catalog No :	YP1782
Reactivity :	Human;Mouse;Rat
Applications :	WB
Target :	BORA
Gene Name :	BORA C13orf34
Protein Name :	BORA (Phospho-Ser497)
Human Gene Id :	79866
Human Swiss Prot No :	Q6PGQ7
Mouse Gene Id :	77744
Mouse Swiss Prot No :	Q8BS90
Rat Gene Id :	306102
Rat Swiss Prot No :	Q5M864
Immunogen :	Synthesized peptide derived from human BORA (Phospho-Ser497)
Specificity :	This antibody detects endogenous levels of BORA (Phospho-Ser497) at Human, Mouse,Rat
Formulation :	Liquid in PBS containing 50% glycerol, 0.5% BSA and 0.02% sodium azide.
Source :	Polyclonal, Rabbit,IgG
Dilution :	WB 1:500-2000
Purification :	The antibody was affinity-purified from rabbit serum by affinity-chromatography using specific immunogen.

Concentration :	1 mg/ml
Storage Stability :	-15°C to -25°C/1 year(Do not lower than -25°C)
Molecularweight :	61kD
Background :	BORA is an activator of the protein kinase Aurora A (AURKA; MIM 603072), which is required for centrosome maturation, spindle assembly, and asymmetric protein localization during mitosis (Hutterer et al., 2006 [PubMed 16890155]).[supplied by OMIM, Mar 2008],
Function :	function:Required for the activation of Aurora-A (AURKA/STK6) at the onset of mitosis.,PTM:Phosphorylated by AURKA/STK6.,similarity:Belongs to the BORA family.,subunit:Interacts with AURKA/STK6.,
Subcellular Location :	cytosol,meiotic spindle,
Expression :	Bone marrow,Leiomyosarcoma,Rhabdomyosarcoma,Small intestine,Testis carcinom

Products Images



Western Blot analysis of 1 Jurkat, 2, LPS 100ng/mL 30min treated ,using primary antibody at 1:1000 dilution. Secondary antibody(catalog#:RS23920) was diluted at 1:10000