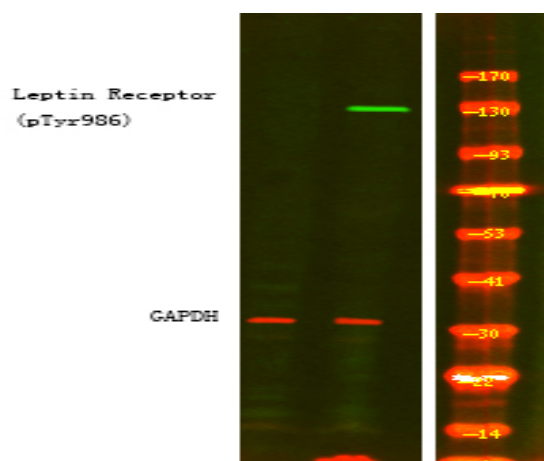


Leptin Receptor (Phospho Tyr986) Rabbit pAb

Catalog No :	YP1805
Reactivity :	Human;Mouse;Rat
Applications :	IHC;WB
Target :	Ob-R
Fields :	>>Cytokine-cytokine receptor interaction;>>Neuroactive ligand-receptor interaction;>>AMPK signaling pathway;>>JAK-STAT signaling pathway;>>Adipocytokine signaling pathway;>>Non-alcoholic fatty liver disease
Gene Name :	LEPR DB OBR
Protein Name :	Leptin receptor (LEP-R) (HuB219) (OB receptor) (OB-R) (CD antigen CD295)
Sequence :	P48357
Human Gene Id :	3953
Human Swiss Prot No :	P48357
Mouse Gene Id :	16847
Mouse Swiss Prot No :	P48356
Rat Gene Id :	24536
Rat Swiss Prot No :	Q62959
Immunogen :	Synthesized peptide derived from human Leptin Receptor (Phospho Tyr986)
Specificity :	This antibody detects endogenous levels of Leptin Receptor (Phospho Tyr986) Rabbit pAb at Human, Mouse,Rat
Formulation :	Liquid in PBS containing 50% glycerol, and 0.02% sodium azide.
Source :	Rabbit,polyclonal

Dilution :	WB 1:500-2000 IHC 1:50-200
Purification :	The antibody was affinity-purified from rabbit serum by affinity-chromatography using specific immunogen.
Concentration :	1 mg/ml
Storage Stability :	-15 °C to -25 °C/1 year(Do not lower than -25 °C)
Observed Band :	132kD
Background :	leptin receptor(LEPR) Homo sapiens The protein encoded by this gene belongs to the gp130 family of cytokine receptors that are known to stimulate gene transcription via activation of cytosolic STAT proteins. This protein is a receptor for leptin (an adipocyte-specific hormone that regulates body weight), and is involved in the regulation of fat metabolism, as well as in a novel hematopoietic pathway that is required for normal lymphopoiesis. Mutations in this gene have been associated with obesity and pituitary dysfunction. Alternatively spliced transcript variants encoding different isoforms have been described for this gene. It is noteworthy that this gene and LEPROT gene (GeneID:54741) share the same promoter and the first 2 exons, however, encode distinct proteins (PMID:9207021).[provided by RefSeq, Nov 2010],
Function :	domain:The box 1 motif is required for JAK interaction and/or activation.,domain:The cytoplasmic domain may be essential for intracellular signal transduction by activation of JAK tyrosine kinase and STATs.,domain:The WSXWS motif appears to be necessary for proper protein folding and thereby efficient intracellular transport and cell-surface receptor binding.,function:Receptor for obesity factor (leptin). On ligand binding, mediates signaling through JAK2/STAT3. Involved in the regulation of fat metabolism and, in a hematopoietic pathway, required for normal lymphopoiesis. May play a role in reproduction. Can also mediate the ERK/FOS signaling pathway.,PTM:On ligand binding, phosphorylated on two conserved C-terminal tyrosine residues (isoform B only) by JAK2. Tyr-986 is required for complete binding and activation of PTPN11, ERK/FOS activation and, for interaction with SOCS3 (By similar
Subcellular Location :	Cell membrane ; Single-pass type I membrane protein . Basolateral cell membrane .; [Isoform E]: Secreted .
Expression :	Isoform A is expressed in fetal liver and in hematopoietic tissues and choroid plexus. In adults highest expression in heart, liver, small intestine, prostate and ovary. Low level in lung and kidney. Isoform B is highly expressed in hypothalamus, but also in skeletal muscle. Detected in fundic and antral epithelial cells of the gastric mucosa (PubMed:19159218). Isoform B and isoform A are expressed by NK cells (at protein level) (PubMed:12504075).

Products Images



Western Blot analysis of 1 HeLa cell, 2 LPS 100ng/mL 30min treated ,using primary antibody at 1:1000 dilution. Secondary antibody(catalog#:RS23920) was diluted at 1:10000