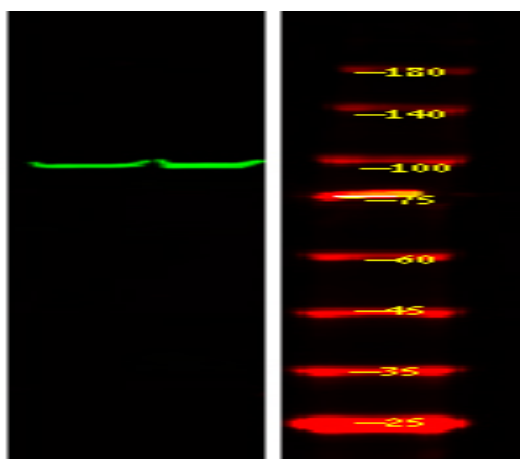


GAB2 (Phospho Tyr614) Rabbit pAb

| | |
|------------------------------|---|
| Catalog No : | YP1867 |
| Reactivity : | Human;Mouse;Rat |
| Applications : | IHC;WB |
| Target : | Gab2 |
| Fields : | >>Ras signaling pathway;>>Sphingolipid signaling pathway;>>Phospholipase D signaling pathway;>>Osteoclast differentiation;>>Fc epsilon RI signaling pathway;>>Fc gamma R-mediated phagocytosis;>>Chronic myeloid leukemia |
| Gene Name : | GAB2 KIAA0571 |
| Protein Name : | GRB2-associated-binding protein 2 (GRB2-associated binder 2) (Growth factor receptor bound protein 2-associated protein 2) (pp100) |
| Sequence : | Q9UQC2 |
| Human Gene Id : | 9846 |
| Human Swiss Prot No : | Q9UQC2 |
| Mouse Swiss Prot No : | Q9Z1S8 |
| Rat Gene Id : | 84477 |
| Rat Swiss Prot No : | Q9EQH1 |
| Immunogen : | Synthesized peptide derived from human GAB2 (Phospho Tyr614) |
| Specificity : | This antibody detects endogenous levels of GAB2 (Phospho Tyr614) Rabbit pAb at Human, Mouse,Rat |
| Formulation : | Liquid in PBS containing 50% glycerol, and 0.02% sodium azide. |
| Source : | Rabbit,polyclonal |

| | |
|-------------------------------|--|
| Dilution : | WB 1:500-2000 IHC 1:50-200 |
| Purification : | The antibody was affinity-purified from rabbit serum by affinity-chromatography using specific immunogen. |
| Concentration : | 1 mg/ml |
| Storage Stability : | -15°C to -25°C/1 year(Do not lower than -25°C) |
| Observed Band : | 100kD |
| Background : | GRB2 associated binding protein 2(GAB2) Homo sapiens This gene is a member of the GRB2-associated binding protein (GAB) gene family. These proteins contain pleckstrin homology (PH) domain, and bind SHP2 tyrosine phosphatase and GRB2 adapter protein. They act as adapters for transmitting various signals in response to stimuli through cytokine and growth factor receptors, and T- and B-cell antigen receptors. The protein encoded by this gene is the principal activator of phosphatidylinositol-3 kinase in response to activation of the high affinity IgE receptor. Two alternatively spliced transcripts encoding different isoforms have been described for this gene. [provided by RefSeq, Nov 2009], |
| Function : | PTM:Dephosphorylated by PTPN11.,PTM:Phosphorylated on tyrosine residue(s) by the thrombopoietin receptor (TPOR), stem cell factor receptor (SCFR), and T-cell and B-cell antigen receptors, gp130, IL-2R and IL-3R.,similarity:Belongs to the GAB family.,similarity:Contains 1 PH domain.,subunit:Interacts with GRB2, PI-3 kinase and with other SH2-containing proteins., |
| Subcellular Location : | Cytoplasm . Cell membrane . |

Products Images



Western Blot analysis of 1 HeLa cell ,using primary antibody at 1:1000 dilution. Secondary antibody(catalog#:RS23920) was diluted at 1:10000