

NuaK1 (Phospho Ser600) rabbit pAb

Catalog No :	YP1730
Reactivity :	Human;Mouse;Rat
Applications :	WB
Target :	NuaK1
Gene Name :	NUAK1 ARK5 KIAA0537 OMPHK1
Protein Name :	NuaK1 (Phospho-Ser600)
Human Gene Id :	9891
Human Swiss Prot No :	O60285
Mouse Gene Id :	77976
Mouse Swiss Prot No :	Q641K5
Immunogen :	Synthesized peptide derived from human NuaK1 (Phospho-Ser600)
Specificity :	This antibody detects endogenous levels of NuaK1 (Phospho-Ser600) at Human, Mouse,Rat
Formulation :	Liquid in PBS containing 50% glycerol, 0.5% BSA and 0.02% sodium azide.
Source :	Polyclonal, Rabbit,IgG
Dilution :	WB 1:500-2000
Purification :	The antibody was affinity-purified from rabbit serum by affinity-chromatography using specific immunogen.
Concentration :	1 mg/ml
Storage Stability :	-15°C to -25°C/1 year(Do not lower than -25°C)

Molecularweight : 73kD**Function :**

catalytic activity:ATP + a protein = ADP + a phosphoprotein.,cofactor:Magnesium.,enzyme regulation:Activated by PKB/AKT1 during glucose starvation. Activated by phosphorylation on Thr-211 by STK11 in complex with STE20-related adapter-alpha (STRAD alpha) pseudo kinase and CAB39.,function:Involved in tolerance to glucose starvation. Phosphorylates ATM. Suppresses Fas-induced apoptosis by phosphorylation of CASP6, thus suppressing the activation of the caspase and the subsequent cleavage of CFLAR.,similarity:Belongs to the protein kinase superfamily.,similarity:Belongs to the protein kinase superfamily. CAMK Ser/Thr protein kinase family. SNF1 subfamily.,similarity:Contains 1 protein kinase domain.,tissue specificity:Expressed at high levels in heart and brain, and at lower levels in skeletal muscle, kidney, ovary, placenta, lung and liver.,

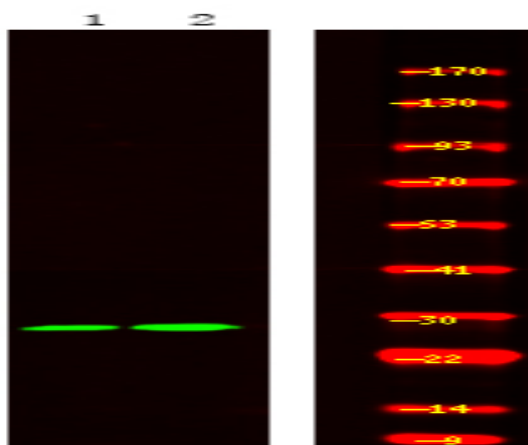
Subcellular Location :

Nucleus . Cytoplasm .

Expression :

Expressed at high levels in heart and brain, and at lower levels in skeletal muscle, kidney, ovary, placenta, lung and liver. Highly up-regulated in colorectal cancer cell lines.

Products Images



Western Blot analysis of mouse brain and rat brain, using primary antibody at 1:1000 dilution. Secondary antibody (catalog#:RS23920) was diluted at 1:10000