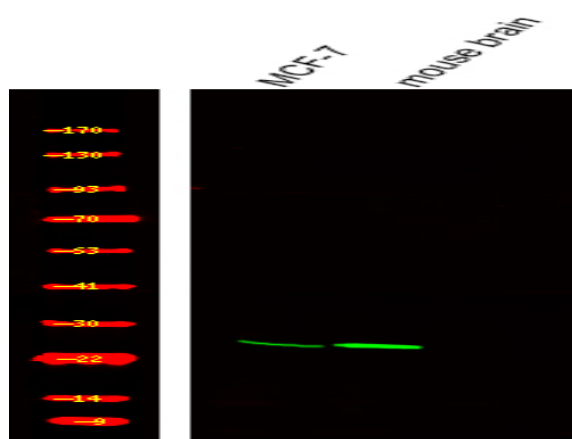


## TPPP (Phospho Ser18) rabbit pAb

<b>Catalog No :</b>	YP1752
<b>Reactivity :</b>	Human;Mouse;Rat
<b>Applications :</b>	WB
<b>Target :</b>	TPPP
<b>Gene Name :</b>	TPPP TPPP1
<b>Protein Name :</b>	TPPP (Phospho-Ser18)
<b>Human Gene Id :</b>	11076
<b>Human Swiss Prot No :</b>	O94811
<b>Mouse Gene Id :</b>	72948
<b>Mouse Swiss Prot No :</b>	Q7TQD2
<b>Immunogen :</b>	Synthesized peptide derived from human TPPP (Phospho-Ser18)
<b>Specificity :</b>	This antibody detects endogenous levels of TPPP (Phospho-Ser18) at Human, Mouse,Rat
<b>Formulation :</b>	Liquid in PBS containing 50% glycerol, 0.5% BSA and 0.02% sodium azide.
<b>Source :</b>	Polyclonal, Rabbit,IgG
<b>Dilution :</b>	WB 1:500-2000
<b>Purification :</b>	The antibody was affinity-purified from rabbit serum by affinity-chromatography using specific immunogen.
<b>Concentration :</b>	1 mg/ml
<b>Storage Stability :</b>	-15°C to -25°C/1 year(Do not lower than -25°C)

**Molecularweight :** 24kD**Function :** function:Promotes in vitro the polymerization of tubulin into double-walled tubules and polymorphic aggregates or bundled stabilized microtubules blocks. When overexpressed, inhibits mitotic spindle assembly and nuclear envelope breakdown, apparently without affecting other cellular events.,PTM:Phosphorylated by TPK II. Poor substrate for GSK3.,similarity:Belongs to the TPPP family.,subunit:May form dimers. Binds tubulin; binding is inhibited by GTP. Interacts with GSK3.,tissue specificity:Widely expressed.,**Subcellular Location :** Golgi outpost . Cytoplasm, cytoskeleton, microtubule organizing center . Cytoplasm, cytoskeleton . Nucleus . Cytoplasm, cytoskeleton, spindle . Specifically localizes to the postsynaptic Golgi apparatus region, also named Golgi outpost, which shapes dendrite morphology by functioning as sites of acentrosomal microtubule nucleation (By similarity). Mainly localizes to the cytoskeleton (PubMed:18028908). Also found in the nucleus; however, nuclear localization is unclear and requires additional evidences (PubMed:18028908). Localizes to glial Lewy bodies in the brains of individuals with synucleinopathies (PubMed:15590652, PubMed:17027006). During mitosis, colocalizes with LIMK2 at the mitotic spindle (PubMed:22328514). .**Expression :** Widely expressed.

## Products Images



Western Blot analysis of various,using primary antibody at 1:1000 dilution. Secondary antibody(catalog#:RS23920) was diluted at 1:10000