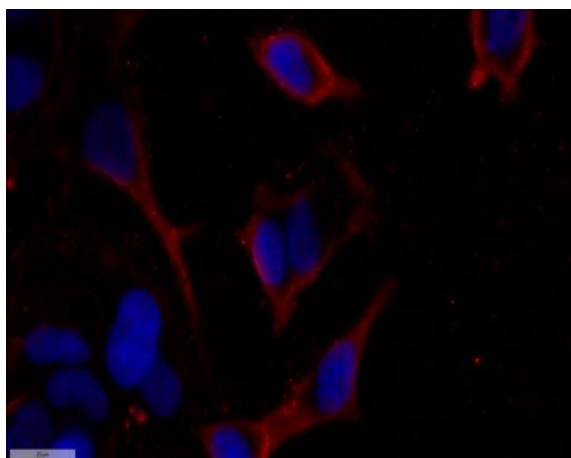


USP28 (Phospho Ser67) rabbit pAb

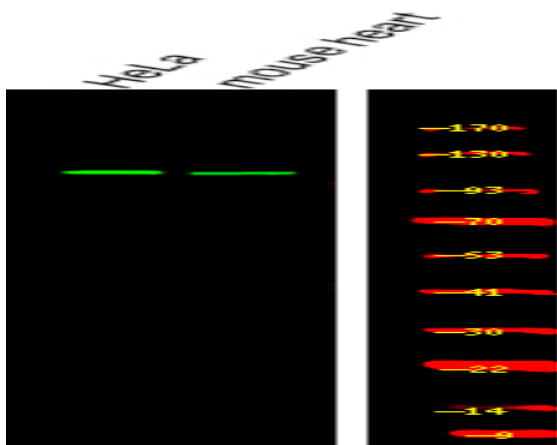
Catalog No :	YP1754
Reactivity :	Human;Mouse;Rat
Applications :	WB
Target :	USP28
Gene Name :	USP28 KIAA1515
Protein Name :	USP28 (Phospho-Ser67)
Human Gene Id :	57646
Human Swiss Prot No :	Q96RU2
Mouse Gene Id :	235323
Mouse Swiss Prot No :	Q5I043
Rat Gene Id :	315639
Rat Swiss Prot No :	D3ZJ96
Immunogen :	Synthesized peptide derived from human USP28 (Phospho-Ser67)
Specificity :	This antibody detects endogenous levels of USP28 (Phospho-Ser67) at Human, Mouse,Rat
Formulation :	Liquid in PBS containing 50% glycerol, 0.5% BSA and 0.02% sodium azide.
Source :	Polyclonal, Rabbit,IgG
Dilution :	WB 1:500-2000
Purification :	The antibody was affinity-purified from rabbit serum by affinity-chromatography using specific immunogen.

Concentration :	1 mg/ml
Storage Stability :	-15°C to -25°C/1 year(Do not lower than -25°C)
Molecularweight :	118kD
Background :	The protein encoded by this gene is a deubiquitinase involved in the DNA damage pathway and DNA damage-induced apoptosis. Overexpression of this gene is seen in several cancers. [provided by RefSeq, Oct 2016],
Function :	catalytic activity:Ubiquitin C-terminal thioester + H(2)O = ubiquitin + a thiol.,PTM:Phosphorylated upon DNA damage, probably by ATM or ATR.,similarity:Belongs to the peptidase C19 family.,similarity:Contains 1 UIM (ubiquitin-interacting motif) repeat.,
Subcellular Location :	Nucleus, nucleoplasm .
Expression :	Brain, Eye,

Products Images



Immunofluorescence analysis of MCF7 cell. 1, primary Antibody was diluted at 1:100(4°C overnight). 2, Goat Anti Rabbit IgG (H&L) - AFluor 594 Secondary antibody(catalog No: RS3611) was diluted at 1:500(room temperature, 50min).



Western Blot analysis of various, using primary antibody at 1:1000 dilution. Secondary antibody(catalog#:RS23920) was diluted at 1:10000