

**HP1- $\beta$  (Phospho Thr51) rabbit pAb**

<b>Catalog No :</b>	YP1758
<b>Reactivity :</b>	Human;Mouse;Rat
<b>Applications :</b>	WB
<b>Target :</b>	HP1 $\beta$
<b>Gene Name :</b>	CBX1 CBX
<b>Protein Name :</b>	HP1- $\beta$ (Phospho-Thr51)
<b>Human Gene Id :</b>	10951
<b>Human Swiss Prot No :</b>	P83916
<b>Mouse Gene Id :</b>	12412
<b>Mouse Swiss Prot No :</b>	P83917
<b>Immunogen :</b>	Synthesized peptide derived from human HP1- $\beta$ (Phospho-Thr51)
<b>Specificity :</b>	This antibody detects endogenous levels of HP1- $\beta$ (Phospho-Thr51) at Human, Mouse,Rat
<b>Formulation :</b>	Liquid in PBS containing 50% glycerol, 0.5% BSA and 0.02% sodium azide.
<b>Source :</b>	Polyclonal, Rabbit,IgG
<b>Dilution :</b>	WB 1:500-2000
<b>Purification :</b>	The antibody was affinity-purified from rabbit serum by affinity-chromatography using specific immunogen.
<b>Concentration :</b>	1 mg/ml
<b>Storage Stability :</b>	-15°C to -25°C/1 year(Do not lower than -25°C)

**Molecularweight :** 20kD

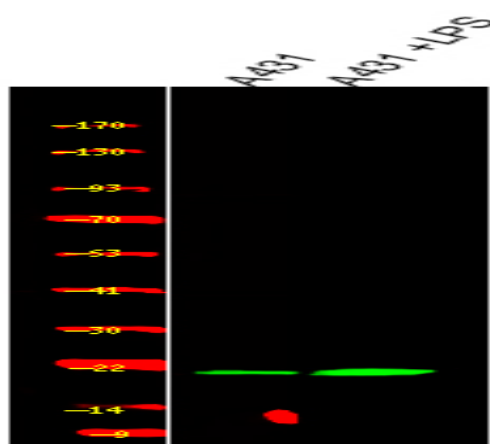
**Background :** This gene encodes a highly conserved nonhistone protein, which is a member of the heterochromatin protein family . The protein is enriched in the heterochromatin and associated with centromeres. The protein has a single N-terminal chromodomain which can bind to histone proteins via methylated lysine residues, and a C-terminal chromo shadow-domain (CSD) which is responsible for the homodimerization and interaction with a number of chromatin-associated nonhistone proteins. The protein may play an important role in the epigenetic control of chromatin structure and gene expression. Several related pseudogenes are located on chromosomes 1, 3, and X. Multiple alternatively spliced variants, encoding the same protein, have been identified. [provided by RefSeq, Jul 2008],

**Function :** function:Component of heterochromatin. Recognizes and binds histone H3 tails methylated at 'Lys-9', leading to epigenetic repression. Interaction with lamin B receptor (LBR) can contribute to the association of the heterochromatin with the inner nuclear membrane.,online information:Heterochromatin protein 1 entry,PTM:Not phosphorylated.,similarity:Contains 2 chromo domains.,subcellular location:Unassociated with chromosomes during mitosis.,subunit:Homodimer. Interacts directly with CHAF1A, EMSY, LBR, TIF1/TIF1A and TRIM28/TIF1B PXVXL motif via the chromoshadow domain. Interacts directly with histone H3 methylated at 'Lys-9' via the chromo domain. Interacts with SUV39H1 and SETDB1, SUV420H1 and SUV420H2. Interacts with PRDM6.,tissue specificity:In all adult and embryonic tissues.,

**Subcellular Location :** Nucleus . Unassociated with chromosomes during mitosis.

**Expression :** Expressed in all adult and embryonic tissues.

## Products Images



Western Blot analysis of various,using primary antibody at 1:1000 dilution. Secondary antibody(catalog#:RS23920) was diluted at 1:10000