

## MAZ (Phospho Thr72) rabbit pAb

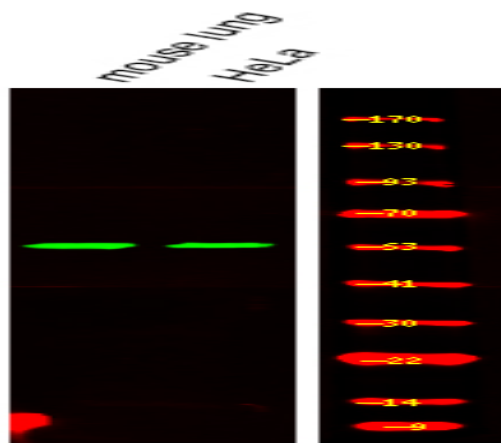
<b>Catalog No :</b>	YP1770
<b>Reactivity :</b>	Human;Mouse;Rat
<b>Applications :</b>	WB
<b>Target :</b>	MAZ
<b>Gene Name :</b>	MAZ ZNF801
<b>Protein Name :</b>	MAZ (Phospho-Thr72)
<b>Human Gene Id :</b>	4150
<b>Human Swiss Prot No :</b>	P56270
<b>Mouse Swiss Prot No :</b>	P56671
<b>Immunogen :</b>	Synthesized peptide derived from human MAZ (Phospho-Thr72)
<b>Specificity :</b>	This antibody detects endogenous levels of MAZ (Phospho-Thr72) at Human, Mouse,Rat
<b>Formulation :</b>	Liquid in PBS containing 50% glycerol, 0.5% BSA and 0.02% sodium azide.
<b>Source :</b>	Polyclonal, Rabbit,IgG
<b>Dilution :</b>	WB 1:500-2000
<b>Purification :</b>	The antibody was affinity-purified from rabbit serum by affinity-chromatography using specific immunogen.
<b>Concentration :</b>	1 mg/ml
<b>Storage Stability :</b>	-15°C to -25°C/1 year(Do not lower than -25°C)
<b>Molecularweight :</b>	52kD

**Function :** function:May function as a transcription factor with dual roles in transcription initiation and termination. Binds to two sites, ME1a1 and ME1a2, within the c-myc promoter having greater affinity for the former. Also binds to multiple G/C-rich sites within the promoter of the Sp1 family of transcription factors.,similarity:Contains 6 C2H2-type zinc fingers.,subcellular location:In brains of Alzheimer disease patients, present in a plaque-like structures.,subunit:Interacts with BPTF.,tissue specificity:Present in kidney, liver and brain. In the brain, highest levels are found in motor cortex and midfrontal cortex (at protein level).

**Subcellular Location :** Nucleus . In brains of Alzheimer disease patients, present in a plaque-like structures.

**Expression :** Present in kidney, liver and brain. In the brain, highest levels are found in motor cortex and midfrontal cortex (at protein level). ; [Isoform 1]: Expressed in the heart, brain, placenta, lung, liver, skeletal muscle and weakly expressed in the kidney (PubMed:1502157). Expressed in the joint synovium (PubMed:19583771).

## Products Images



Western Blot analysis of various,using primary antibody at 1:1000 dilution. Secondary antibody(catalog#:RS23920) was diluted at 1:10000