

**EPHA6 (Phospho Tyr978) rabbit pAb**

<b>Catalog No :</b>	YP1790
<b>Reactivity :</b>	Human;Mouse;Rat
<b>Applications :</b>	WB
<b>Target :</b>	EPHA6
<b>Fields :</b>	>>Axon guidance
<b>Gene Name :</b>	EPHA6 EHK2 HEK12
<b>Protein Name :</b>	EPHA6 (Phospho-Tyr978)
<b>Human Gene Id :</b>	285220
<b>Human Swiss Prot No :</b>	Q9UF33
<b>Mouse Swiss Prot No :</b>	Q62413
<b>Rat Swiss Prot No :</b>	P54758
<b>Immunogen :</b>	Synthesized peptide derived from human EPHA6 (Phospho-Tyr978)
<b>Specificity :</b>	This antibody detects endogenous levels of EPHA6 (Phospho-Tyr978) at Human, Mouse,Rat
<b>Formulation :</b>	Liquid in PBS containing 50% glycerol, 0.5% BSA and 0.02% sodium azide.
<b>Source :</b>	Polyclonal, Rabbit,IgG
<b>Dilution :</b>	WB 1:500-2000
<b>Purification :</b>	The antibody was affinity-purified from rabbit serum by affinity-chromatography using specific immunogen.
<b>Concentration :</b>	1 mg/ml

**Storage Stability :** -15°C to -25°C/1 year(Do not lower than -25°C)

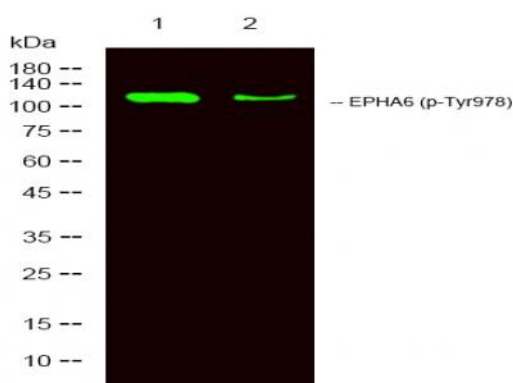
**Observed Band :** 116kD

**Function :** catalytic activity:ATP + a [protein]-L-tyrosine = ADP + a [protein]-L-tyrosine phosphate.,function:Receptor for members of the ephrin-A family.,similarity:Belongs to the protein kinase superfamily. Tyr protein kinase family. Ephrin receptor subfamily.,similarity:Contains 1 protein kinase domain.,similarity:Contains 1 SAM (sterile alpha motif) domain.,similarity:Contains 2 fibronectin type-III domains.,tissue specificity:Expressed in brain and testis.,

**Subcellular Location :** Membrane ; Single-pass type I membrane protein .

**Expression :** Expressed in brain and testis.

## Products Images



Western Blot analysis of 1 HeLa, 2 treated with LPS 100ng/mL 20min,using primary antibody at 1:1000 dilution. Secondary antibody(catalog#:RS23920) was diluted at 1:10000