

DAPK1 (Phospho Ser289) Rabbit pAb

Catalog No :	YP1813
Reactivity :	Human;Mouse
Applications :	IHC;WB
Target :	DAPK1
Fields :	>>Autophagy - animal;>>Pathways in cancer;>>Bladder cancer
Gene Name :	DAPK1 DAPK
Protein Name :	Death-associated protein kinase 1 (DAP kinase 1) (EC 2.7.11.1)
Human Gene Id :	1612
Human Swiss Prot No :	P53355
Mouse Gene Id :	69635
Mouse Swiss Prot No :	Q80YE7
Immunogen :	Synthesized peptide derived from human DAPK1 (Phospho Ser289)
Specificity :	This antibody detects endogenous levels of DAPK1 (Phospho Ser289) Rabbit pAb at Human, Mouse
Formulation :	Liquid in PBS containing 50% glycerol, and 0.02% sodium azide.
Source :	Rabbit,polyclonal
Dilution :	WB 1:500-2000 IHC 1:50-200
Purification :	The antibody was affinity-purified from rabbit serum by affinity-chromatography using specific immunogen.
Concentration :	1 mg/ml

Storage Stability : -15°C to -25°C/1 year(Do not lower than -25°C)

Molecularweight : 157kD

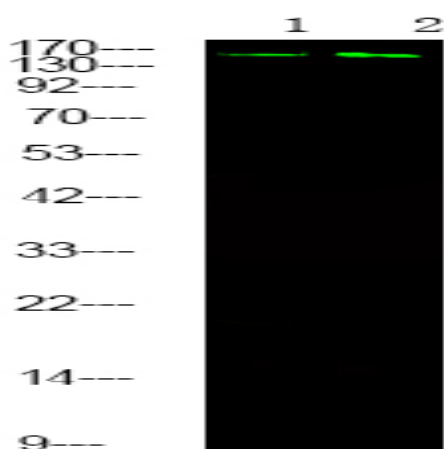
Background : death associated protein kinase 1(DAPK1) Homo sapiens Death-associated protein kinase 1 is a positive mediator of gamma-interferon induced programmed cell death. DAPK1 encodes a structurally unique 160-kD calmodulin dependent serine-threonine kinase that carries 8 ankyrin repeats and 2 putative P-loop consensus sites. It is a tumor suppressor candidate. Alternative splicing results in multiple transcript variants. [provided by RefSeq, Dec 2013],

Function : catalytic activity:ATP + a protein = ADP + a phosphoprotein.,cofactor:Magnesium.,enzyme regulation:Negatively regulated by autophosphorylation on Ser-308.,function:Calcium/calmodulin-dependent serine/threonine kinase which acts as a positive regulator of apoptosis.,induction:Up-regulated following treatment with interferon-gamma.,similarity:Belongs to the protein kinase superfamily.,similarity:Belongs to the protein kinase superfamily. CAMK Ser/Thr protein kinase family. DAP kinase subfamily.,similarity:Contains 1 death domain.,similarity:Contains 1 protein kinase domain.,similarity:Contains 10 ANK repeats.,subcellular location:Colocalizes with the actin filament system.,

Subcellular Location : [Isoform 1]: Cytoplasm. Cytoplasm, cytoskeleton. Colocalizes with MAP1B in the microtubules and cortical actin fibers.; [Isoform 2]: Cytoplasm. Cytoplasm, cytoskeleton.

Expression : Isoform 2 is expressed in normal intestinal tissue as well as in colorectal carcinomas.

Products Images



Western Blot analysis of 1 HeLa cell, 2 LPS 100ng/mL 30min treated ,using primary antibody at 1:1000 dilution. Secondary antibody(catalog#:RS23920) was diluted at 1:10000