

**Rab 5A (PT0309R) PT® Rabbit mAb**

<b>Catalog No :</b>	YM8182
<b>Reactivity :</b>	Human; Mouse; Rat;
<b>Applications :</b>	WB;IHC;IF;IP;ELISA
<b>Gene Name :</b>	>>Ras signaling pathway;>>Endocytosis;>>Phagosome;>>Vasopressin-regulated water reabsorption;>>Amyotrophic lateral sclerosis;>>Pathways of neurodegeneration - multiple diseases;>>Salmonella infection;>>Amoebiasis;>>Tuberculosis
<b>Protein Name :</b>	RAB5A
<b>Sequence :</b>	Ras-related protein Rab-5A
<b>Human Gene Id :</b>	5868
<b>Human Swiss Prot No :</b>	P20339
<b>Mouse Gene Id :</b>	271457
<b>Mouse Swiss Prot No :</b>	Q9CQD1
<b>Specificity :</b>	endogenous
<b>Formulation :</b>	PBS, 50% glycerol, 0.05% Proclin 300, 0.05%BSA
<b>Source :</b>	Monoclonal, rabbit, IgG, Kappa
<b>Dilution :</b>	IHC 1:1000-1:4000,WB 1:1000-1:5000,IF 1:200-1:1000,ELISA 1:5000-1:20000,IP 1:50-1:200,
<b>Purification :</b>	Protein A
<b>Storage Stability :</b>	-15°C to -25°C/1 year(Do not lower than -25°C)
<b>Molecularweight :</b>	24kD

**Observed Band :** 24kD

---

**Cell Pathway :** Endocytosis;Amyotrophic lateral sclerosis (ALS);

---

**Background :** enzyme regulation:Regulated by guanine nucleotide exchange factors (GEFs) which promote the exchange of bound GDP for free GTP.,function:Required for the fusion of plasma membranes and early endosomes.,similarity:Belongs to the small GTPase superfamily. Rab family.,subcellular location:Enriched in stage I melanosomes.,subunit:Binds EEA1. Interacts with RIN1 and GAPVD1, which regulate its pathway, probably by acting as a GEF. Interacts with ALS2CL, UNC84B, ZFYVE20 and RUFY1. Interacts with SGSM1 and SGSM3.,

---

**Function :** enzyme regulation:Regulated by guanine nucleotide exchange factors (GEFs) which promote the exchange of bound GDP for free GTP.,function:Required for the fusion of plasma membranes and early endosomes.,similarity:Belongs to the small GTPase superfamily. Rab family.,subcellular location:Enriched in stage I melanosomes.,subunit:Binds EEA1. Interacts with RIN1 and GAPVD1, which regulate its pathway, probably by acting as a GEF. Interacts with ALS2CL, UNC84B, ZFYVE20 and RUFY1. Interacts with SGSM1 and SGSM3.,

---

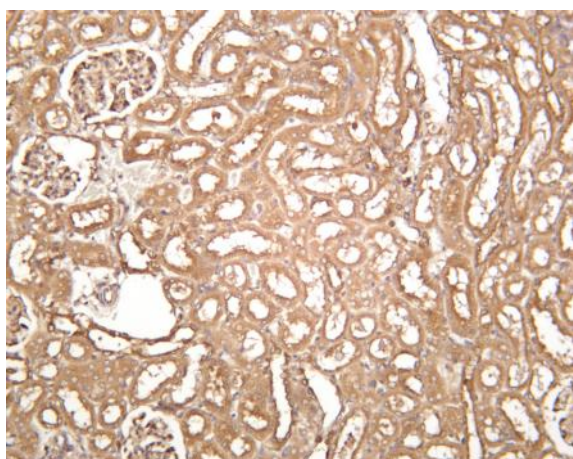
**Subcellular Location :** Cytoplasm, Membrane

---

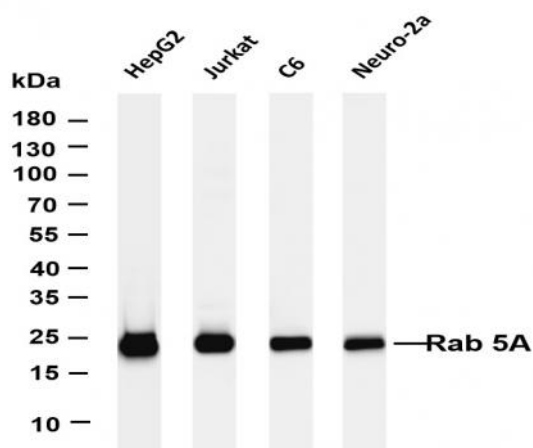
**Expression :** Brain,Cervix,Cervix carcinoma,Placenta,

---

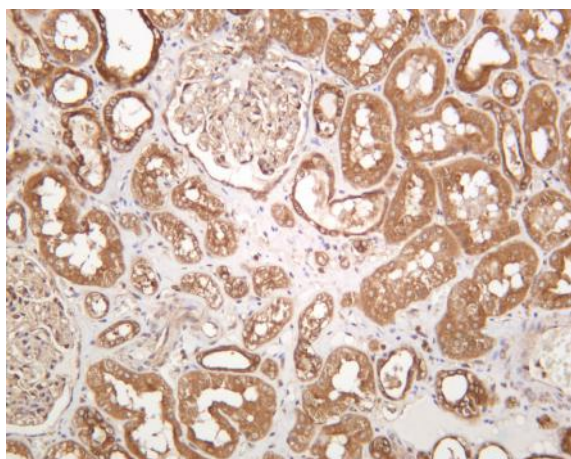
## Products Images



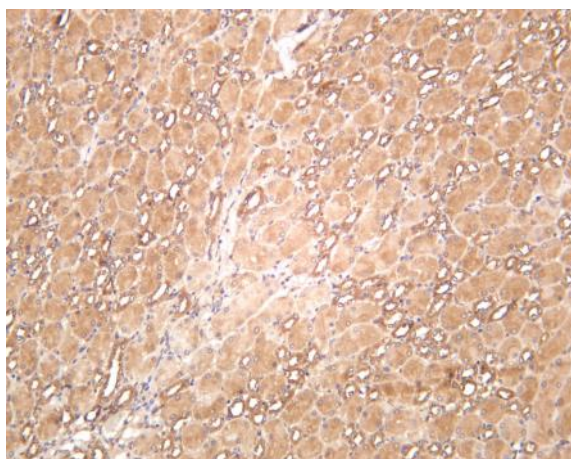
Rat kidney was stained with anti-Rab 5A (PT0309R) rabbit antibody



Various whole cell lysates were separated by 4-20% SDS-PAGE, and the membrane was blotted with anti-Rab 5A (PT0309R) antibody. The HRP-conjugated Goat anti-Rabbit IgG(H + L) antibody was used to detect the antibody. Lane 1: HepG2 Lane 2: Jurkat Lane 3: C6 Lane 4: Neuro-2a Predicted band size: 24kDa Observed band size: 24kDa



Human kidney was stained with anti-Rab 5A (PT0309R) rabbit antibody



Mouse kidney was stained with anti-Rab 5A (PT0309R) rabbit antibody