

**CREB-2 (phospho Ser245) Polyclonal Antibody**

<b>Catalog No :</b>	YP0076
<b>Reactivity :</b>	Human;Rat;Mouse;
<b>Applications :</b>	IHC;IF(paraffin section);ELISA
<b>Gene Name :</b>	ATF4
<b>Protein Name :</b>	Cyclic AMP-dependent transcription factor ATF-4
<b>Human Gene Id :</b>	468
<b>Human Swiss Prot No :</b>	P18848
<b>Mouse Swiss Prot No :</b>	Q06507
<b>Immunogen :</b>	The antiserum was produced against synthesized peptide derived from human ATF4 around the phosphorylation site of Ser245. AA range:212-261
<b>Specificity :</b>	Phospho-CREB-2 (S245) Polyclonal Antibody detects endogenous levels of CREB-2 protein only when phosphorylated at S245.
<b>Formulation :</b>	Liquid in PBS containing 50% glycerol, 0.5% BSA and 0.02% sodium azide.
<b>Source :</b>	Polyclonal, Rabbit,IgG
<b>Dilution :</b>	IHC 1:100 -300. ELISA: 1:10000. Not yet tested in other applications.
<b>Purification :</b>	The antibody was affinity-purified from rabbit antiserum by affinity-chromatography using epitope-specific immunogen.
<b>Concentration :</b>	1 mg/ml
<b>Storage Stability :</b>	-20°C/1 year
<b>Cell Pathway :</b>	MAPK_ERK_Growth;MAPK_G_Protein;Long-term potentiation;Neurotrophin;GnRH;Prostate cancer;

**Background :**

activating transcription factor 4(ATF4) Homo sapiens This gene encodes a transcription factor that was originally identified as a widely expressed mammalian DNA binding protein that could bind a tax-responsive enhancer element in the LTR of HTLV-1. The encoded protein was also isolated and characterized as the cAMP-response element binding protein 2 (CREB-2). The protein encoded by this gene belongs to a family of DNA-binding proteins that includes the AP-1 family of transcription factors, cAMP-response element binding proteins (CREBs) and CREB-like proteins. These transcription factors share a leucine zipper region that is involved in protein-protein interactions, located C-terminal to a stretch of basic amino acids that functions as a DNA binding domain. Two alternative transcripts encoding the same protein have been described. Two pseudogenes are located on the X chromosome at q28 in a region containing a large inverted duplication. [provid

**Function :**

function:Transcriptional activator. Binds the cAMP response element (CRE) (consensus: 5'-GTGACGT[AC][AG]-3'), a sequence present in many viral and cellular promoters. It binds to a Tax-responsive enhancer element in the long terminal repeat of HTLV-I.,similarity:Belongs to the bZIP family.,similarity:Contains 1 bZIP domain.,subcellular location:Colocalizes with GABBR1 in hippocampal neuron dendritic membranes.,subunit:Interacts with the C-terminal region of GABBR1 via the leucine zipper of its C-terminal bZIP domain. Interacts with the C-terminal region of GABBR2 (By similarity). Binds DNA as a homo-or heterodimer. Interacts with the N-terminal region of CEP290.,

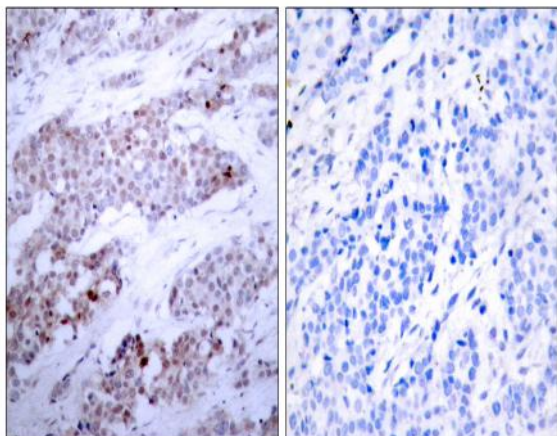
**Subcellular Location :**

Nucleus . Nucleus speckle . Cytoplasm . Cell membrane . Cytoplasm, cytoskeleton, microtubule organizing center, centrosome . Colocalizes with GABBR1 in hippocampal neuron dendritic membranes (By similarity). Colocalizes with NEK6 at the centrosome (PubMed:20873783). Recruited to nuclear speckles following interaction with EP300/p300 (PubMed:16219772). .

**Expression :**

Bladder,Colon,Fibroblast,Leukemic T-cell,Lung,Ovary,Placenta,

## Products Images



Immunohistochemistry analysis of paraffin-embedded human breast carcinoma, using ATF4 (Phospho-Ser245) Antibody. The picture on the right is blocked with the phospho peptide.