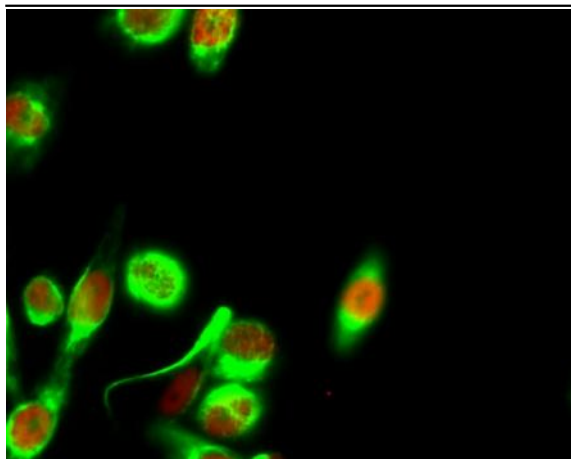


Histone H4 (Acetyl Lys8) Polyclonal Antibody

Catalog No :	YK0012
Reactivity :	Human;Mouse;Rat;Monkey
Applications :	WB;IHC;IF;ELISA
Target :	Histone H4
Fields :	>>Neutrophil extracellular trap formation;>>Alcoholism;>>Viral carcinogenesis;>>Systemic lupus erythematosus
Gene Name :	HIST1H4A/HIST1H4B/HIST1H4C/HIST1H4D/HIST1H4E/HIST1H4F/HIST1H4H/HIST1H4I/HIST1H4J/HIST1H4K/HIST1H4L/HIST2H4A/HIST2H4B/HIST4H4
Protein Name :	Histone H4
Human Gene Id :	121504/554313/8294/8359/8360/8361/8362/8363/8364/8365/8366/8367/8368/8370
Human Swiss Prot No :	P62805
Mouse Gene Id :	1.00041e+008
Mouse Swiss Prot No :	P62806
Rat Gene Id :	1.00361e+008
Rat Swiss Prot No :	P62804
Immunogen :	The antiserum was produced against synthesized peptide derived from human Histone H4 around the acetylated site of Lys8. AA range:1-50
Specificity :	Acetyl-Histone H4 (K8) Polyclonal Antibody detects endogenous levels of Histone H4 protein only when acetylated at K8.
Formulation :	Liquid in PBS containing 50% glycerol, 0.5% BSA and 0.02% sodium azide.
Source :	Polyclonal, Rabbit,IgG

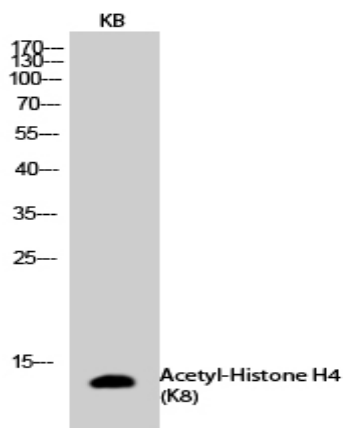
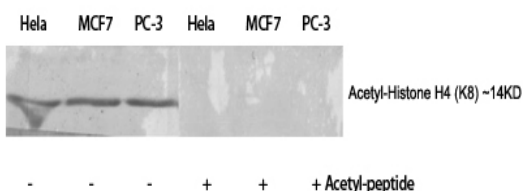
Dilution :	WB 1:500 - 1:2000. IHC 1:100 - 1:300. IF 1:200 - 1:1000. ELISA: 1:5000. Not yet tested in other applications.
Purification :	The antibody was affinity-purified from rabbit antiserum by affinity-chromatography using epitope-specific immunogen.
Concentration :	1 mg/ml
Storage Stability :	-15°C to -25°C/1 year(Do not lower than -25°C)
Observed Band :	11kD
Cell Pathway :	Protein_Acetylation
Background :	<p>Histones are basic nuclear proteins that are responsible for the nucleosome structure of the chromosomal fiber in eukaryotes. Two molecules of each of the four core histones (H2A, H2B, H3, and H4) form an octamer, around which approximately 146 bp of DNA is wrapped in repeating units, called nucleosomes. The linker histone, H1, interacts with linker DNA between nucleosomes and functions in the compaction of chromatin into higher order structures. This gene is intronless and encodes a replication-dependent histone that is a member of the histone H4 family. Transcripts from this gene lack polyA tails but instead contain a palindromic termination element. This gene is found in the histone microcluster on chromosome 6p21.33. [provided by RefSeq, Aug 2015],</p>
Function :	<p>function:Core component of nucleosome. Nucleosomes wrap and compact DNA into chromatin, limiting DNA accessibility to the cellular machineries which require DNA as a template. Histones thereby play a central role in transcription regulation, DNA repair, DNA replication and chromosomal stability. DNA accessibility is regulated via a complex set of post-translational modifications of histones, also called histone code, and nucleosome remodeling.,PTM:Acetylation at Lys-6, Lys-9, Lys-13 and Lys-17 occurs in coding regions of the genome but not in heterochromatin.,PTM:Citrullination at Arg-4 by PADI4 impairs methylation.,PTM:Monomethylated, dimethylated or trimethylated at Lys-21. Monomethylation is performed by SET8. Trimethylation is performed by SUV420H1 and SUV420H2 and induces gene silencing.,PTM:Monomethylation at Arg-4 by PRMT1 favors acetylation at Lys-9 and Lys-13. Demethylation is p</p>
Subcellular Location :	Nucleus. Chromosome.
Expression :	B-cell lymphoma,Bone marrow,Brain,Clones donated by HIP,Corpus call

Products Images

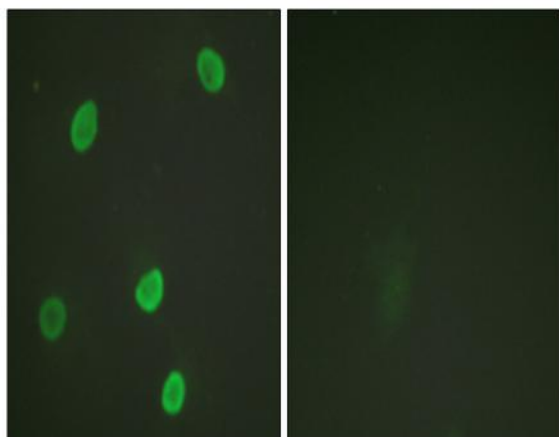


Immunofluorescence analysis of HeLa cell. 1, Histone H4 (Acetyl Lys8) Polyclonal Antibody (red) was diluted at 1:200 (4° overnight). HER2 Monoclonal Antibody (11H9) (green) was diluted at 1:200 (4° overnight). 2, Goat Anti Rabbit Alexa Fluor 594 Catalog:RS3611 was diluted at 1:1000 (room temperature, 50min). Goat Anti Mouse Alexa Fluor 488 Catalog:RS3208 was diluted at 1:1000 (room temperature, 50min).

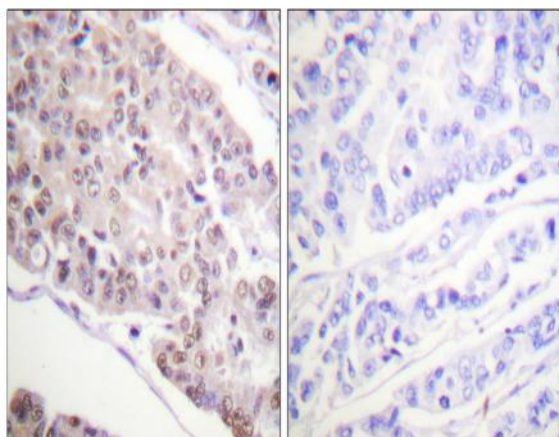
Western Blot analysis of various cells using Acetyl-Histone H4 (K8) Polyclonal Antibody diluted at 1:500. Secondary antibody (catalog#:RS0002) was diluted at 1:20000



Western Blot analysis of KB cells using Acetyl-Histone H4 (K8) Polyclonal Antibody diluted at 1:500. Secondary antibody (catalog#:RS0002) was diluted at 1:20000



Immunofluorescence analysis of HeLa cells, using Histone H4 (Acetyl-Lys8) Antibody. The picture on the right is blocked with the synthesized peptide.



Immunohistochemistry analysis of paraffin-embedded human breast carcinoma tissue, using Histone H4 (Acetyl-Lys8) Antibody. The picture on the right is blocked with the synthesized peptide.