

Acetyl eIF5A/eIF5A2 (K47) Polyclonal Antibody

Catalog No :	YK0021
Reactivity :	Human;Mouse;Rat
Applications :	WB;ELISA
Target :	eIF5A2
Gene Name :	EIF5A2
Protein Name :	Eukaryotic translation initiation factor 5A-2
Human Gene Id :	56648
Human Swiss Prot No :	Q9GZV4
Mouse Gene Id :	208691
Mouse Swiss Prot No :	Q8BGY2
Immunogen :	The antiserum was produced against synthesized Acetyl-peptide derived from human eIF5A around the Acetylation site of Lys47. AA range:11-60
Specificity :	Acetyl-eIF5A/eIF5A2 (K47) Polyclonal Antibody detects endogenous levels of eIF5A/eIF5A2 protein only when acetylated at K47.
Formulation :	Liquid in PBS containing 50% glycerol, 0.5% BSA and 0.02% sodium azide.
Source :	Polyclonal, Rabbit,IgG
Dilution :	WB 1:500 - 1:2000. ELISA: 1:20000. Not yet tested in other applications.
Purification :	The antibody was affinity-purified from rabbit antiserum by affinity-chromatography using epitope-specific immunogen.
Concentration :	1 mg/ml
Storage Stability :	-15°C to -25°C/1 year(Do not lower than -25°C)

Molecularweight : 17kD

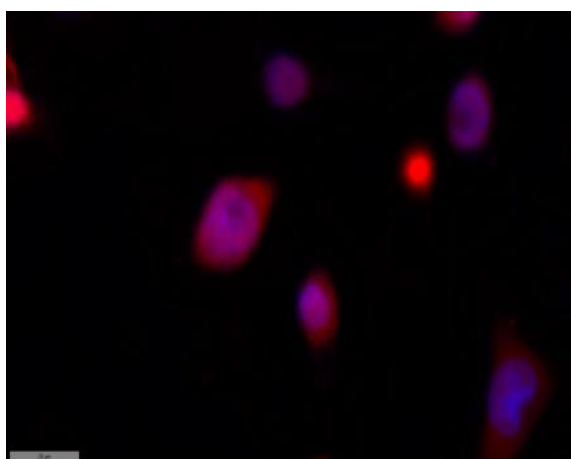
Background : function:The precise role of eIF-5A in protein biosynthesis is not known but it functions by promoting the formation of the first peptide bond.,PTM:eIF-5A seems to be the only eukaryotic protein to have an hypusine residue which is a post-translational modification of a lysine by the addition of a butylamino group (from spermidine).,similarity:Belongs to the eIF-5A family.,tissue specificity:Expressed in ovarian and colorectal cancer cell lines (at protein level). Highly expressed in testis. Overexpressed in some cancer cells.,

Function : function:The precise role of eIF-5A in protein biosynthesis is not known but it functions by promoting the formation of the first peptide bond.,PTM:eIF-5A seems to be the only eukaryotic protein to have an hypusine residue which is a post-translational modification of a lysine by the addition of a butylamino group (from spermidine).,similarity:Belongs to the eIF-5A family.,tissue specificity:Expressed in ovarian and colorectal cancer cell lines (at protein level). Highly expressed in testis. Overexpressed in some cancer cells.,

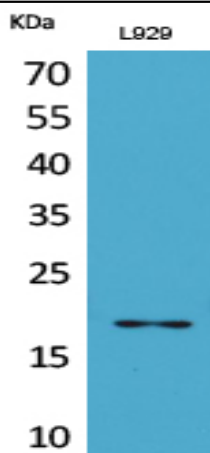
Subcellular Location : Cytoplasm . Nucleus . Endoplasmic reticulum membrane ; Peripheral membrane protein ; Cytoplasmic side . Nucleus, nuclear pore complex . Hypusine modification promotes the nuclear export and cytoplasmic localization and there was a dynamic shift in the localization from predominantly cytoplasmic to primarily nuclear under apoptotic inducing conditions. .

Expression : Expressed in ovarian and colorectal cancer cell lines (at protein level). Highly expressed in testis. Overexpressed in some cancer cells.

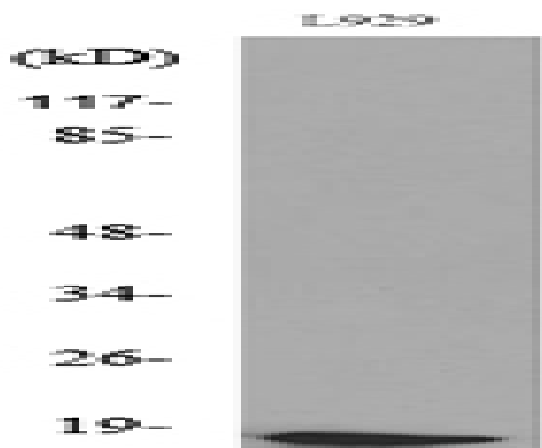
Products Images



Immunofluorescence analysis of MCF7 cell. 1,primary Antibody was diluted at 1:100(4 °C overnight). 2, Goat Anti Rabbit IgG (H&L) - AFluor 594 Secondary antibody(catalog No: RS3611) was diluted at 1:500(room temperature, 50min).



Western blot analysis of L929 lysis using antibody diluted at 1:1000. Secondary antibody(catalog#:RS0002) was diluted at 1:20000



Western blot analysis of lysate from L929 cells, using eIF5A (Acetyl-Lys47) Antibody.