

**KLF13 (Acetyl Lys166) rabbit pAb**

<b>Catalog No :</b>	YK0152
<b>Reactivity :</b>	Human;Mouse
<b>Applications :</b>	WB;IHC
<b>Target :</b>	KLF13
<b>Gene Name :</b>	KLF13 BTEB3 NSLP1
<b>Protein Name :</b>	KLF13 (Acetyl Lys166)
<b>Human Gene Id :</b>	51621
<b>Human Swiss Prot No :</b>	Q9Y2Y9
<b>Mouse Gene Id :</b>	50794
<b>Mouse Swiss Prot No :</b>	Q9JJZ6
<b>Immunogen :</b>	Synthesized peptide derived from human KLF13 (Acetyl Lys166)
<b>Specificity :</b>	This antibody detects endogenous levels of Human,Mouse KLF13 (Acetyl Lys166)
<b>Formulation :</b>	Liquid in PBS containing 50% glycerol, 0.5% BSA and 0.02% sodium azide.
<b>Source :</b>	Polyclonal, Rabbit,IgG
<b>Dilution :</b>	WB 1:500-2000;IHC 1:50-300
<b>Purification :</b>	The antibody was affinity-purified from rabbit serum by affinity-chromatography using specific immunogen.
<b>Concentration :</b>	1 mg/ml
<b>Storage Stability :</b>	-15°C to -25°C/1 year(Do not lower than -25°C)

---

**Observed Band :** 32kD

---

**Background :** KLF13 belongs to a family of transcription factors that contain 3 classical zinc finger DNA-binding domains consisting of a zinc atom tetrahedrally coordinated by 2 cysteines and 2 histidines (C2H2 motif). These transcription factors bind to GC-rich sequences and related GT and CACCC boxes (Schoy et al., 2000 [PubMed 11087666]).[supplied by OMIM, Mar 2008],

---

**Function :** domain:The Ala/Pro-rich domain may contain discrete activation and repression subdomains and also can mediate protein-protein interactions.,function:Represses transcription by binding to the BTE site, a GC-rich DNA element, in competition with the activator SP1. It also represses transcription by interacting with the corepressor Sin3A and HDAC1. Activates RANTES expression in T-cells.,PTM:Phosphorylated.,similarity:Belongs to the Sp1 C2H2-type zinc-finger protein family.,similarity:Contains 3 C2H2-type zinc fingers.,tissue specificity:Ubiquitous.,

---

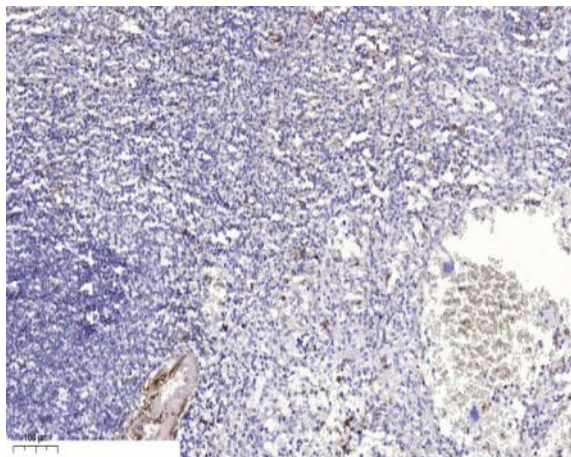
**Subcellular Location :** Nucleus.

---

**Expression :** Ubiquitous.

---

## Products Images



Immunohistochemical analysis of paraffin-embedded human spleen. 1, Antibody was diluted at 1:200(4° overnight). 2, Tris-EDTA,pH9.0 was used for antigen retrieval. 3,Secondary antibody was diluted at 1:200(room temperature, 45min).