

ATF-2 Monoclonal Antibody

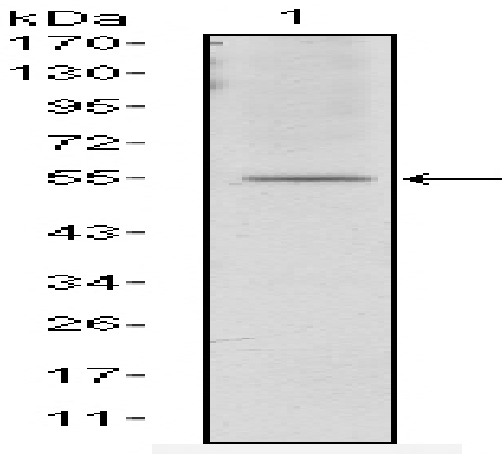
Catalog No :	YM0052
Reactivity :	Human;Mouse
Applications :	WB;IHC;IF;ELISA
Target :	ATF-2
Fields :	>>MAPK signaling pathway;>>cGMP-PKG signaling pathway;>>PI3K-Akt signaling pathway;>>Longevity regulating pathway;>>Adrenergic signaling in cardiomyocytes;>>TNF signaling pathway;>>Thermogenesis;>>Dopaminergic synapse;>>Insulin secretion;>>Estrogen signaling pathway;>>Thyroid hormone synthesis;>>Glucagon signaling pathway;>>Aldosterone synthesis and secretion;>>Relaxin signaling pathway;>>Cortisol synthesis and secretion;>>Parathyroid hormone synthesis, secretion and action;>>Cushing syndrome;>>Growth hormone synthesis, secretion and action;>>Prion disease;>>Cocaine addiction;>>Amphetamine addiction;>>Alcoholism;>>Hepatitis B;>>Human cytomegalovirus infection;>>Human T-cell leukemia virus 1 infection;>>Viral carcinogenesis;>>Chemical carcinogenesis - receptor activation
Gene Name :	ATF2
Protein Name :	Cyclic AMP-dependent transcription factor ATF-2
Human Gene Id :	1386
Human Swiss Prot No :	P15336
Mouse Gene Id :	1.00048e+008
Mouse Swiss Prot No :	P16951
Immunogen :	Purified recombinant fragment of human ATF-2 expressed in E. Coli.
Specificity :	ATF-2 Monoclonal Antibody detects endogenous levels of ATF-2 protein.
Formulation :	Liquid in PBS containing 50% glycerol, 0.5% BSA and 0.02% sodium azide.

Source :	Monoclonal, Mouse
Dilution :	WB 1:500 - 1:2000. IHC 1:200 - 1:1000. ELISA: 1:10000.. IF 1:50-200
Purification :	Affinity purification
Storage Stability :	-15°C to -25°C/1 year(Do not lower than -25°C)
Molecularweight :	55kD
Cell Pathway :	B Cell Receptor; Stem cell pathway; MAPK_ERK_Growth;MAPK_G_Protein; PI3K/Akt; Protein_Acetylation
P References :	<ol style="list-style-type: none">1. J Dermatol Sci. 2008 Sep;51(3):210-5.2. J Biol Chem. 2008 Jun 20;283(25):17605-14.
Background :	<p>activating transcription factor 2(ATF2) Homo sapiens This gene encodes a transcription factor that is a member of the leucine zipper family of DNA binding proteins. The encoded protein has been identified as a moonlighting protein based on its ability to perform mechanistically distinct functions This protein binds to the cAMP-responsive element (CRE), an octameric palindrome. It forms a homodimer or a heterodimer with c-Jun and stimulates CRE-dependent transcription. This protein is also a histone acetyltransferase (HAT) that specifically acetylates histones H2B and H4 in vitro; thus it may represent a class of sequence-specific factors that activate transcription by direct effects on chromatin components. The encoded protein may also be involved in cell's DNA damage response independent of its role in transcriptional regulation. Several alternatively spliced transcript variants have been found for this gene [provided by RefSeq, Jan 2014]</p>
Function :	<p>caution:It is uncertain whether Met-1 or Met-19 is the initiator.,function:Transcriptional activator, probably constitutive, which binds to the cAMP-responsive element (CRE) (consensus: 5'-GTGACGT[AC][AG]-3'), a sequence present in many viral and cellular promoters. Interaction with JUN redirects JUN to bind to CRES preferentially over the 12-O-tetradecanoylphorbol-13-acetate response elements (TRES) as part of an ATF2-c-Jun complex.,PTM:Phosphorylation of Thr-69 and Thr-71 by MAPK14 causes increased transcriptional activity. Also phosphorylated and activated by JNK.,similarity:Belongs to the bZIP family.,similarity:Belongs to the bZIP family. ATF subfamily.,similarity:Contains 1 bZIP domain.,similarity:Contains 1 C2H2-type zinc finger.,subunit:Binds DNA as a dimer and can form a homodimer in the absence of DNA. Can form a heterodimer with JUN. Interacts with SMAD3 and SMAD4. Binds throu</p>
Subcellular Location :	Nucleus. Cytoplasm. Mitochondrion outer membrane. Shuttles between the cytoplasm and the nucleus and heterodimerization with JUN is essential for the nuclear localization. Localization to the cytoplasm is observed under conditions of

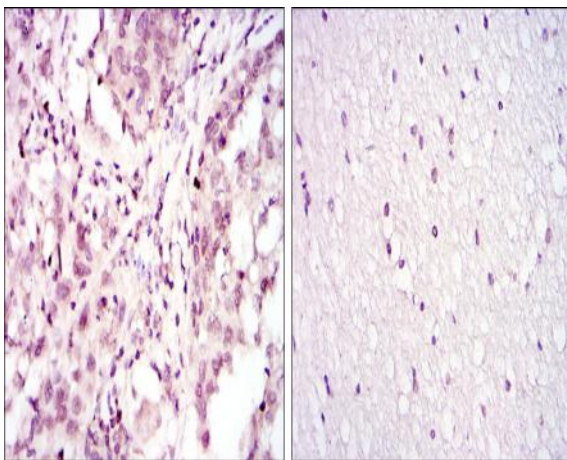
cellular stress and in disease states. Localizes at the mitochondrial outer membrane in response to genotoxic stress. Phosphorylation at Thr-52 is required for its nuclear localization and negatively regulates its mitochondrial localization. Co-localizes with the MRN complex in the IR-induced foci (IRIF).

Expression : Ubiquitously expressed, with more abundant expression in the brain.

Products Images



Western Blot analysis using ATF-2 Monoclonal Antibody against NIH/3T3 cell lysate.



Immunohistochemistry analysis of paraffin-embedded lung cancer (left) and brain tissues (right) with DAB staining using ATF-2 Monoclonal Antibody.

