

Axl Monoclonal Antibody

Catalog No :	YM0055
Reactivity :	Human
Applications :	WB;IF;ELISA
Target :	Axl
Fields :	>>EGFR tyrosine kinase inhibitor resistance
Gene Name :	AXL UFO
Protein Name :	Tyrosine-protein kinase receptor UFO
Human Gene Id :	558
Human Swiss Prot No :	P30530
Mouse Swiss Prot No :	Q00993
Immunogen :	Purified recombinant extracellular fragment of human Axl fused with hlgGfc tag expressed in HEK293 cell line.
Specificity :	Axl Monoclonal Antibody detects endogenous levels of Axl protein.
Formulation :	Liquid in PBS containing 50% glycerol, 0.5% BSA and 0.02% sodium azide.
Source :	Monoclonal, Mouse
Dilution :	WB 1:500 - 1:2000. IF 1:200 - 1:1000. ELISA: 1:10000. Not yet tested in other applications.
Purification :	Affinity purification
Storage Stability :	-15°C to -25°C/1 year(Do not lower than -25°C)
Observed Band :	130kD

P References :

1. Br J Cancer. 2006 May 22;94(10):1446-51.
2. Proc Natl Acad Sci U S A. 2006 Apr 11;103(15):5799-804.

Background :

The protein encoded by this gene is a member of the Tyro3-Axl-Mer (TAM) receptor tyrosine kinase subfamily. The encoded protein possesses an extracellular domain which is composed of two immunoglobulin-like motifs at the N-terminal, followed by two fibronectin type-III motifs. It transduces signals from the extracellular matrix into the cytoplasm by binding to the vitamin K-dependent protein growth arrest-specific 6 (Gas6). This gene may be involved in several cellular functions including growth, migration, aggregation and anti-inflammation in multiple cell types. Alternative splicing results in multiple transcript variants of this gene. [provided by RefSeq, Jul 2013],

Function :

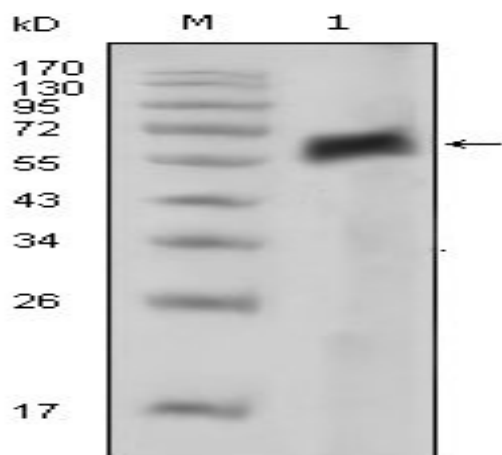
catalytic activity:ATP + a [protein]-L-tyrosine = ADP + a [protein]-L-tyrosine phosphate.,disease:Has transforming potential in patients with chronic myeloproliferative disorder or chronic myelocytic leukemia.,function:May function as a signal transducer between specific cell types of mesodermal origin. In case of filovirus infection, seems to function as a cell entry factor.,similarity:Belongs to the protein kinase superfamily. Tyr protein kinase family. AXL/UFO subfamily.,similarity:Contains 1 protein kinase domain.,similarity:Contains 2 fibronectin type-III domains.,similarity:Contains 2 Ig-like C2-type (immunoglobulin-like) domains.,subunit:Heterodimer and heterotetramer with GAS6.,tissue specificity:Highly expressed in metastatic colon tumors. Expressed in primary colon tumors. Weakly expressed in normal colon tissue.,

Subcellular Location :

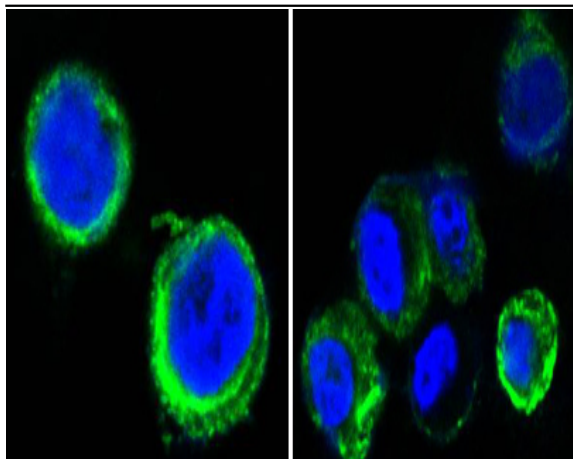
Cell membrane ; Single-pass type I membrane protein .

Expression :

Highly expressed in metastatic colon tumors. Expressed in primary colon tumors. Weakly expressed in normal colon tissue.

Products Images

Western Blot analysis using Axl Monoclonal Antibody against extracellular domain of human AXL (aa19-444).



Confocal immunofluorescence analysis of methanol-fixed HEK293 cells transfected with AXL-hlgGfc using Axl Monoclonal Antibody (green), showing cytoplasmic and membrane localization. Blue: DRAQ5 fluorescent DNA dye.