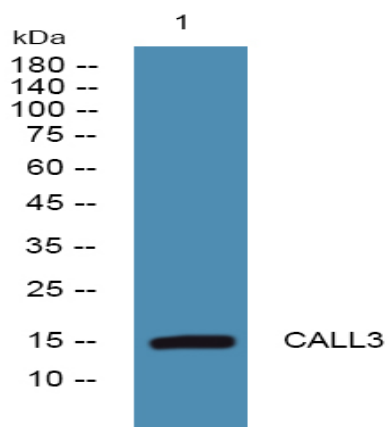


CALL3 Polyclonal Antibody

Catalog No :	YN0534
Reactivity :	Human;Mouse;Rat
Applications :	WB;ELISA
Target :	CALL3
Fields :	>>Ras signaling pathway;>>Rap1 signaling pathway;>>Calcium signaling pathway;>>cGMP-PKG signaling pathway;>>cAMP signaling pathway;>>Phosphatidylinositol signaling system;>>Oocyte meiosis;>>Cellular senescence;>>Adrenergic signaling in cardiomyocytes;>>Vascular smooth muscle contraction;>>Apelin signaling pathway;>>C-type lectin receptor signaling pathway;>>Circadian entrainment;>>Long-term potentiation;>>Neurotrophin signaling pathway;>>Dopaminergic synapse;>>Olfactory transduction;>>Phototransduction;>>Inflammatory mediator regulation of TRP channels;>>Insulin signaling pathway;>>GnRH signaling pathway;>>Estrogen signaling pathway;>>Melanogenesis;>>Oxytocin signaling pathway;>>Glucagon signaling pathway;>>Renin secretion;>>Aldosterone synthesis and secretion;>>Salivary secretion;>>Gastric acid secretion;>>Alzheimer disease;>>Parkinson disease;>>Pathways of neurodegeneration - multiple diseases;>>Amphetamine addiction;>>Alcoholism;>>Pertussis;>>Tuberculosis;>>Human cytomegalovirus inf
Gene Name :	CALML3
Protein Name :	Calmodulin-like protein 3 (CaM-like protein) (CLP) (Calmodulin-related protein NB-1)
Human Gene Id :	810
Human Swiss Prot No :	P27482
Mouse Swiss Prot No :	Q9D6P8
Rat Swiss Prot No :	Q5U206
Immunogen :	Synthesized peptide derived from part region of human protein

Specificity :	CALL3 Polyclonal Antibody detects endogenous levels of protein.
Formulation :	Liquid in PBS containing 50% glycerol, and 0.02% sodium azide.
Source :	Polyclonal, Rabbit,IgG
Dilution :	WB 1:500-2000 ELISA 1:5000-20000
Purification :	The antibody was affinity-purified from rabbit antiserum by affinity-chromatography using epitope-specific immunogen.
Concentration :	1 mg/ml
Storage Stability :	-15°C to -25°C/1 year(Do not lower than -25°C)
Observed Band :	16kD
Cell Pathway :	Calcium;Phosphatidylinositol signaling system;Oocyte meiosis;Vascular smooth muscle contraction;Long-term potentiation;Neurotrophin;Olfactory transduction;Insulin_Receptor;GnRH;Melanogenesis;Alzheimer
Background :	function:May be similar to that of authentic calmodulin and may actually compete with calmodulin by binding, with different affinities, to cellular substrates.,induction:By human beta type transforming growth factor.,miscellaneous:Binds four calcium ions.,similarity:Belongs to the calmodulin family.,similarity:Contains 4 EF-hand domains.,tissue specificity:Expressed in normal mammary, prostate, cervical, and epidermal tissues. It is greatly reduced or undetectable in transformed cells.,
Function :	function:May be similar to that of authentic calmodulin and may actually compete with calmodulin by binding, with different affinities, to cellular substrates.,induction:By human beta type transforming growth factor.,miscellaneous:Binds four calcium ions.,similarity:Belongs to the calmodulin family.,similarity:Contains 4 EF-hand domains.,tissue specificity:Expressed in normal mammary, prostate, cervical, and epidermal tissues. It is greatly reduced or undetectable in transformed cells.,
Subcellular Location :	extracellular exosome,
Expression :	Expressed in normal mammary, prostate, cervical, and epidermal tissues. It is greatly reduced or undetectable in transformed cells.

Products Images



Western blot analysis of lysates from PC12 cells, primary antibody was diluted at 1:1000, 4° over night