

CD10 Monoclonal Antibody

| | |
|------------------------------|--|
| Catalog No : | YM0100 |
| Reactivity : | Human |
| Applications : | WB;IHC;IF;ELISA |
| Target : | CD10 |
| Fields : | >>Renin-angiotensin system;>>Hematopoietic cell lineage;>>Protein digestion and absorption;>>Alzheimer disease |
| Gene Name : | MME |
| Protein Name : | Neprilysin |
| Human Gene Id : | 4311 |
| Human Swiss Prot No : | P08473 |
| Mouse Swiss Prot No : | Q61391 |
| Immunogen : | Purified recombinant fragment of CD10 expressed in E. Coli. |
| Specificity : | CD10 Monoclonal Antibody detects endogenous levels of CD10 protein. |
| Formulation : | Liquid in PBS containing 50% glycerol, 0.5% BSA and 0.02% sodium azide. |
| Source : | Monoclonal, Mouse |
| Dilution : | WB 1:500 - 1:2000. IHC 1:200 - 1:1000. ELISA: 1:10000.. IF 1:50-200 |
| Purification : | Affinity purification |
| Storage Stability : | -15°C to -25°C/1 year(Do not lower than -25°C) |
| Molecularweight : | 86kD |

Cell Pathway : Renin-angiotensin system;Hematopoietic cell lineage;Alzheimer's disease;

P References : 1. Journal of Gastroenterology,1996 Feb.31(1):12-7.
2. British Journal of Haematology,1995,89(3):623-6.

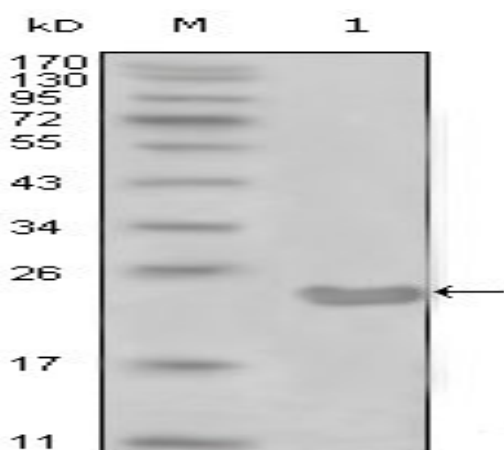
Background : This gene encodes a common acute lymphocytic leukemia antigen that is an important cell surface marker in the diagnosis of human acute lymphocytic leukemia (ALL). This protein is present on leukemic cells of pre-B phenotype, which represent 85% of cases of ALL. This protein is not restricted to leukemic cells, however, and is found on a variety of normal tissues. It is a glycoprotein that is particularly abundant in kidney, where it is present on the brush border of proximal tubules and on glomerular epithelium. The protein is a neutral endopeptidase that cleaves peptides at the amino side of hydrophobic residues and inactivates several peptide hormones including glucagon, enkephalins, substance P, neurotensin, oxytocin, and bradykinin. This gene, which encodes a 100-kD type II transmembrane glycoprotein, exists in a single copy of greater than 45 kb. The 5' untranslated region of this

Function : catalytic activity:Preferential cleavage of polypeptides between hydrophobic residues, particularly with Phe or Tyr at P1'.,cofactor:Binds 1 zinc ion per subunit.,disease:Important cell surface marker in the diagnostic of human acute lymphocytic leukemia.,enzyme regulation:Inhibited in a dose dependent manner by opiorphin.,function:Thermolysin-like specificity, but is almost confined on acting on polypeptides of up to 30 amino acids. Biologically important in the destruction of opioid peptides such as Met- and Leu-enkephalins by cleavage of a Gly-Phe bond. Involved in the degradation of atrial natriuretic factor (ANF).,similarity:Belongs to the peptidase M13 family.,

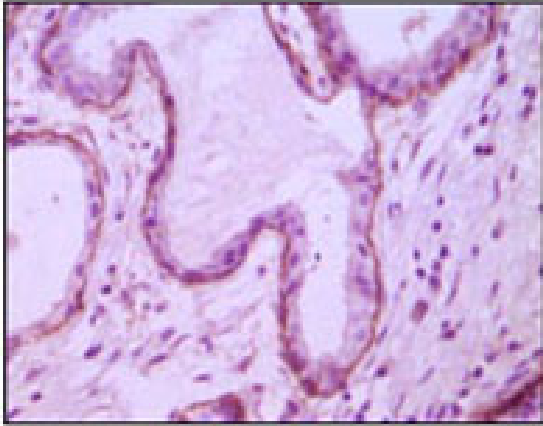
Subcellular Location : Cell membrane; Single-pass type II membrane protein.

Expression : Adrenal cortex,Brain,Kidney,Placenta,

Products Images



Western Blot analysis using CD10 Monoclonal Antibody against truncated CD10-His recombinant protein (1).



Immunohistochemistry analysis of paraffin-embedded human breast ductal myoepithelium, showing cytoplasmic and membrane location with DAB staining using CD10 Monoclonal Antibody.