

NDF6 Polyclonal Antibody

Catalog No :	YN0961
Reactivity :	Human;Mouse
Applications :	WB;ELISA
Target :	NDF6
Gene Name :	NEUROD6 ATOH2 BHLHA2 My051
Protein Name :	Neurogenic differentiation factor 6 (NeuroD6) (Class A basic helix-loop-helix protein 2) (bHLHa2) (Protein atonal homolog 2)
Human Gene Id :	63974
Human Swiss Prot No :	Q96NK8
Mouse Swiss Prot No :	P48986
Immunogen :	Synthesized peptide derived from human protein . at AA range: 230-310
Specificity :	NDF6 Polyclonal Antibody detects endogenous levels of protein.
Formulation :	Liquid in PBS containing 50% glycerol, and 0.02% sodium azide.
Source :	Polyclonal, Rabbit,IgG
Dilution :	WB 1:500-2000 ELISA 1:5000-20000
Purification :	The antibody was affinity-purified from rabbit antiserum by affinity-chromatography using epitope-specific immunogen.
Concentration :	1 mg/ml
Storage Stability :	-15°C to -25°C/1 year(Do not lower than -25°C)
Observed Band :	37kD

Background :

This gene is a member of the NEUROD family of basic helix-loop-helix transcription factors. The encoded protein may be involved in the development and differentiation of the nervous system. [provided by RefSeq, Nov 2012],

Function :

function:Activates E box-dependent transcription in collaboration with TCF3/E47. May be a trans-acting factor involved in the development and maintenance of the mammalian nervous system. Transactivates the promoter of its own gene.,similarity:Contains 1 basic helix-loop-helix (bHLH) domain.,subunit:Efficient DNA binding requires dimerization with another bHLH protein.,

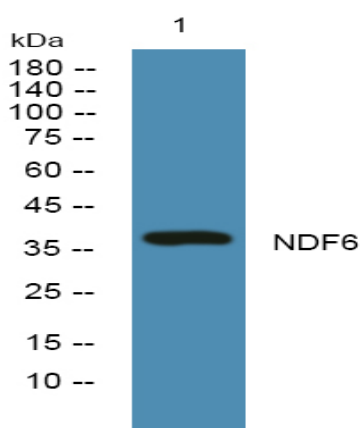
Subcellular Location :

Nucleus .

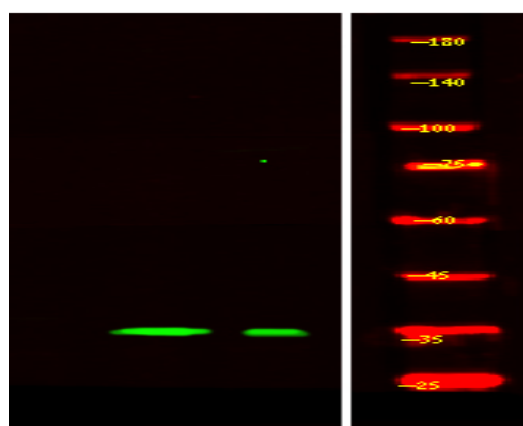
Expression :

Amygdala,Brain,Fetal brain,

Products Images



Western blot analysis of lysates from DU145 cells, primary antibody was diluted at 1:1000, 4° over night



Western Blot analysis of HeLa lysis, using primary antibody at 1:1000 dilution. Secondary antibody(catalog#:RS23920) was diluted at 1:10000