

## c-Fgr Monoclonal Antibody

<b>Catalog No :</b>	YM0151
<b>Reactivity :</b>	Human;Mouse
<b>Applications :</b>	WB;IHC;IF;ELISA
<b>Target :</b>	c-Fgr
<b>Fields :</b>	>>Chemokine signaling pathway
<b>Gene Name :</b>	FGR
<b>Protein Name :</b>	Tyrosine-protein kinase Fgr
<b>Human Gene Id :</b>	2268
<b>Human Swiss Prot No :</b>	P09769
<b>Mouse Gene Id :</b>	14191
<b>Mouse Swiss Prot No :</b>	P14234
<b>Immunogen :</b>	Purified recombinant fragment of human c-Fgr expressed in E. Coli.
<b>Specificity :</b>	c-Fgr Monoclonal Antibody detects endogenous levels of c-Fgr protein.
<b>Formulation :</b>	Liquid in PBS containing 50% glycerol, 0.5% BSA and 0.02% sodium azide.
<b>Source :</b>	Monoclonal, Mouse
<b>Dilution :</b>	WB 1:500 - 1:2000. IHC 1:200 - 1:1000. ELISA: 1:10000.. IF 1:50-200
<b>Purification :</b>	Affinity purification
<b>Storage Stability :</b>	-15°C to -25°C/1 year(Do not lower than -25°C)
<b>Molecularweight :</b>	59kD

**Cell Pathway :** Chemokine;

**P References :**

1. Immunity. 2005 Feb;22(2):235-46.
2. Biochemistry. 2007 Oct 2;46(39):11023-32.

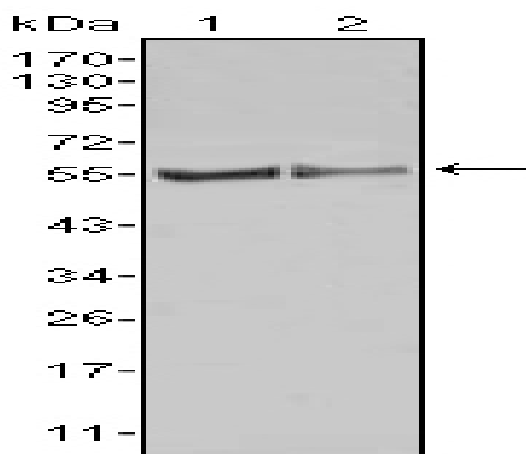
**Background :** This gene is a member of the Src family of protein tyrosine kinases (PTKs). The encoded protein contains N-terminal sites for myristylation and palmitylation, a PTK domain, and SH2 and SH3 domains which are involved in mediating protein-protein interactions with phosphotyrosine-containing and proline-rich motifs, respectively. The protein localizes to plasma membrane ruffles, and functions as a negative regulator of cell migration and adhesion triggered by the beta-2 integrin signal transduction pathway. Infection with Epstein-Barr virus results in the overexpression of this gene. Multiple alternatively spliced variants, encoding the same protein, have been identified. [provided by RefSeq, Jul 2008],

**Function :** catalytic activity:ATP + a [protein]-L-tyrosine = ADP + a [protein]-L-tyrosine phosphate.,similarity:Belongs to the protein kinase superfamily. Tyr protein kinase family. SRC subfamily.,similarity:Contains 1 protein kinase domain.,similarity:Contains 1 SH2 domain.,similarity:Contains 1 SH3 domain.,subunit:Binds PTPNS1.,

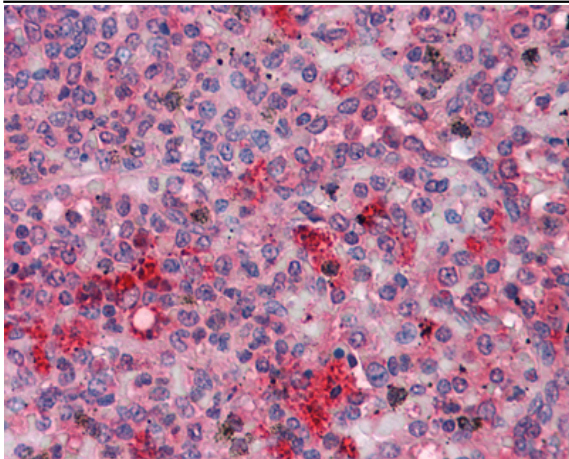
**Subcellular Location :** Cell membrane ; Lipid-anchor ; Cytoplasmic side . Cell membrane; Peripheral membrane protein; Cytoplasmic side. Cell projection, ruffle membrane. Cytoplasm, cytosol. Cytoplasm, cytoskeleton. Mitochondrion inner membrane . Mitochondrion intermembrane space . Detected in mitochondrial intermembrane space and at inner membranes (By similarity). Colocalizes with actin fibers at membrane ruffles. Detected at plasma membrane lipid rafts. .

**Expression :** Detected in neutrophils, monocytes and natural killer cells (at protein level). Detected in monocytes and large lymphocytes.

## Products Images



Western Blot analysis using c-Fgr Monoclonal Antibody against HL60 (1) Raw264.7 (2) cell lysate.



Immunohistochemistry analysis of paraffin-embedded human Spleen tissues with AEC staining using c-Fgr Monoclonal Antibody.