

## Fes Monoclonal Antibody

<b>Catalog No :</b>	YM0263
<b>Reactivity :</b>	Human
<b>Applications :</b>	WB;IHC;IF;ELISA
<b>Target :</b>	Fes
<b>Fields :</b>	>>Axon guidance
<b>Gene Name :</b>	FES
<b>Protein Name :</b>	Tyrosine-protein kinase Fes/Fps
<b>Human Gene Id :</b>	2242
<b>Human Swiss Prot No :</b>	P07332
<b>Mouse Swiss Prot No :</b>	P16879
<b>Immunogen :</b>	Purified recombinant fragment of Fer expressed in E. Coli.
<b>Specificity :</b>	Fes Monoclonal Antibody detects endogenous levels of Fes protein.
<b>Formulation :</b>	Liquid in PBS containing 50% glycerol, 0.5% BSA and 0.02% sodium azide.
<b>Source :</b>	Monoclonal, Mouse
<b>Dilution :</b>	WB 1:500 - 1:2000. IHC 1:200 - 1:1000. ELISA: 1:10000.. IF 1:50-200
<b>Purification :</b>	Affinity purification
<b>Storage Stability :</b>	-15°C to -25°C/1 year(Do not lower than -25°C)
<b>Molecularweight :</b>	93kD
<b>Cell Pathway :</b>	Axon guidance;

**P References :**

1. Delfino FJ. Stevenson H. Smithgall TE. J Biol Chem. 2006, Mar 31, 281(13): 8829-35. Epub 2006 Feb 2.
2. Durfee WK. Rivard A. J Biomech Eng. 2005, Nov, 127(6):1014-9.
3. Vitenzon AS. Mironov

**Background :**

This gene encodes the human cellular counterpart of a feline sarcoma retrovirus protein with transforming capabilities. The gene product has tyrosine-specific protein kinase activity and that activity is required for maintenance of cellular transformation. Its chromosomal location has linked it to a specific translocation event identified in patients with acute promyelocytic leukemia but it is also involved in normal hematopoiesis as well as growth factor and cytokine receptor signaling. Alternative splicing results in multiple variants encoding different isoforms.[provided by RefSeq, Jan 2009],

**Function :**

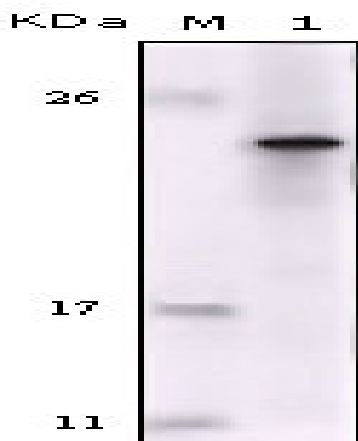
catalytic activity:ATP + a [protein]-L-tyrosine = ADP + a [protein]-L-tyrosine phosphate.,similarity:Belongs to the protein kinase superfamily. Tyr protein kinase family.,similarity:Belongs to the protein kinase superfamily. Tyr protein kinase family. Fes/fps subfamily.,similarity:Contains 1 FCH domain.,similarity:Contains 1 protein kinase domain.,similarity:Contains 1 SH2 domain.,

**Subcellular Location :**

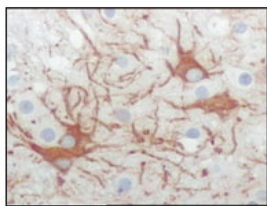
Cytoplasm, cytosol. Cytoplasm, cytoskeleton. Cell membrane; Peripheral membrane protein; Cytoplasmic side. Cytoplasmic vesicle. Golgi apparatus. Cell junction, focal adhesion. Distributed throughout the cytosol when the kinase is not activated. Association with microtubules requires activation of the kinase activity. Shuttles between focal adhesions and cell-cell contacts in epithelial cells. Recruited to the lateral cell membrane in polarized epithelial cells by interaction with phosphorylated EZR. Detected at tubular membrane structures in the cytoplasm and at the cell periphery.

**Expression :**

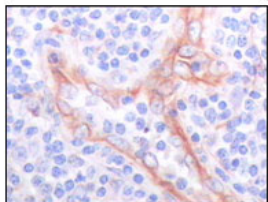
Widely expressed. Detected in adult colon epithelium (at protein level) (PubMed:16455651, PubMed:19051325). Expressed in melanocytes (at protein level) (PubMed:28463229).

**Products Images**

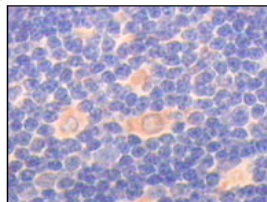
Western Blot analysis using Fes Monoclonal Antibody against truncated Fes recombinant protein.



A



B



C

Immunohistochemistry analysis of paraffin-embedded human cerebrum tumor (A), endothelium of vessel (B), lymphocyte of thymus(C), showing cytoplasmic localization with DAB staining using Fes Monoclonal Antibody.