

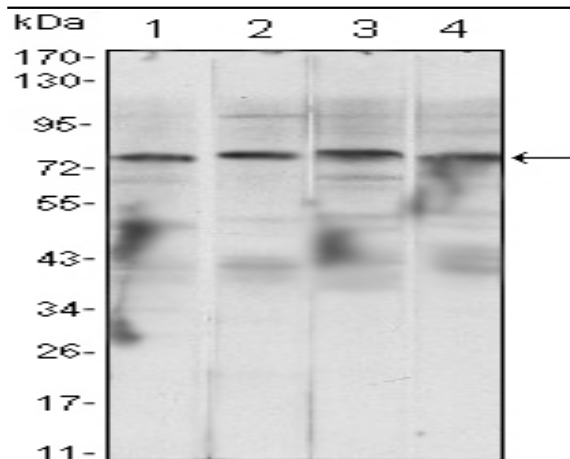
## IKK $\alpha$ Monoclonal Antibody

<b>Catalog No :</b>	YM0361
<b>Reactivity :</b>	Human
<b>Applications :</b>	WB;IF;FCM;ELISA
<b>Target :</b>	IKK $\alpha$
<b>Fields :</b>	>>Antifolate resistance;>>MAPK signaling pathway;>>Ras signaling pathway;>>Chemokine signaling pathway;>>NF-kappa B signaling pathway;>>FoxO signaling pathway;>>mTOR signaling pathway;>>PI3K-Akt signaling pathway;>>Apoptosis;>>Osteoclast differentiation;>>Toll-like receptor signaling pathway;>>NOD-like receptor signaling pathway;>>RIG-I-like receptor signaling pathway;>>Cytosolic DNA-sensing pathway;>>C-type lectin receptor signaling pathway;>>IL-17 signaling pathway;>>Th1 and Th2 cell differentiation;>>Th17 cell differentiation;>>T cell receptor signaling pathway;>>B cell receptor signaling pathway;>>TNF signaling pathway;>>Adipocytokine signaling pathway;>>Alcoholic liver disease;>>Alzheimer disease;>>Epithelial cell signaling in Helicobacter pylori infection;>>Pathogenic Escherichia coli infection;>>Shigellosis;>>Salmonella infection;>>Yersinia infection;>>Chagas disease;>>Toxoplasmosis;>>Hepatitis C;>>Hepatitis B;>>Measles;>>Human cytomegalovirus infection;>>Influenza A;>>Human pap
<b>Gene Name :</b>	CHUK
<b>Protein Name :</b>	Inhibitor of nuclear factor kappa-B kinase subunit alpha
<b>Human Gene Id :</b>	1147
<b>Human Swiss Prot No :</b>	O15111
<b>Mouse Swiss Prot No :</b>	Q60680
<b>Immunogen :</b>	Purified recombinant fragment of human IKK $\alpha$ expressed in E. Coli.
<b>Specificity :</b>	IKK $\alpha$ Monoclonal Antibody detects endogenous levels of IKK $\alpha$ protein.
<b>Formulation :</b>	Liquid in PBS containing 50% glycerol, 0.5% BSA and 0.02% sodium azide.

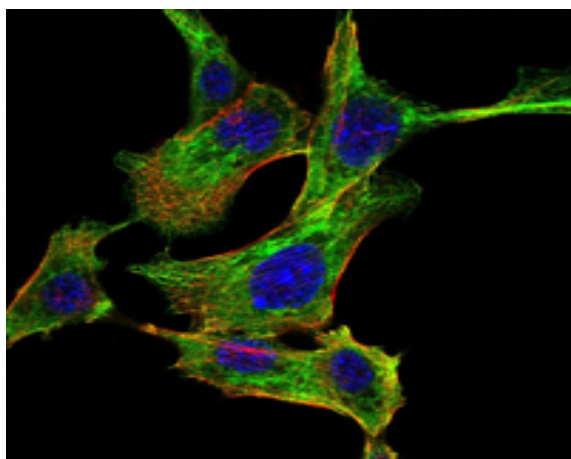
<b>Source :</b>	Monoclonal, Mouse
<b>Dilution :</b>	WB 1:500 - 1:2000. IF 1:200 - 1:1000. Flow cytometry: 1:200 - 1:400. ELISA: 1:10000. Not yet tested in other applications.
<b>Purification :</b>	Affinity purification
<b>Storage Stability :</b>	-15°C to -25°C/1 year(Do not lower than -25°C)
<b>Molecularweight :</b>	85kD
<b>Cell Pathway :</b>	T_Cell_Receptor; Insulin Receptor; B_Cell_Antigen; Stem cell pathway; Toll_Like; MAPK_ERK_Growth;MAPK_G_Protein; PI3K/Akt; NF_kappaB; Protein_Acetylation
<b>P References :</b>	1. Mol Cancer. 2010 Jan 5;9:1. 2. J Infect Dis. 2010 May 1;201(9):1371-80.
<b>Background :</b>	This gene encodes a member of the serine/threonine protein kinase family. The encoded protein, a component of a cytokine-activated protein complex that is an inhibitor of the essential transcription factor NF-kappa-B complex, phosphorylates sites that trigger the degradation of the inhibitor via the ubiquination pathway, thereby activating the transcription factor. [provided by RefSeq, Jul 2008],
<b>Function :</b>	catalytic activity:ATP + [I-kappa-B protein] = ADP + [I-kappa-B phosphoprotein]..enzyme regulation:Activated when phosphorylated and inactivated when dephosphorylated..function:Acts as part of the IKK complex in the conventional pathway of NF-kappa-B activation and phosphorylates inhibitors of NF-kappa-B thus leading to the dissociation of the inhibitor/NF-kappa-B complex and ultimately the degradation of the inhibitor. As part of the non-canonical pathway of NF-kappa-B activation, the MAP3K14-activated CHUK/IKKA homodimer phosphorylates NFKB2/p100 associated with RelB, inducing its proteolytic processing to NFKB2/p52 and the formation of NF-kappa-B RelB-p52 complexes. Also phosphorylates NCOA3. Phosphorylates 'Ser-10' of histone H3 at NF-kappa-B-regulated promoters during inflammatory responses triggered by cytokines..PTM:Phosphorylated by MAP3K14/NIK, AKT and to a lesser extent by MEKK
<b>Subcellular Location :</b>	Cytoplasm . Nucleus . Shuttles between the cytoplasm and the nucleus.
<b>Expression :</b>	Widely expressed.

---

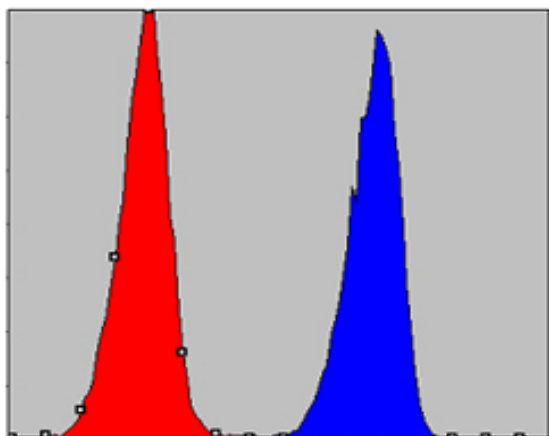
## Products Images



Western Blot analysis using IKK $\alpha$  Monoclonal Antibody against Raji (1), Jurkat (2), THP-1 (3) and K562 (4) cell lysate.



Immunofluorescence analysis of NIH/3T3 cells using IKK $\alpha$  Monoclonal Antibody (green). Blue: DRAQ5 fluorescent DNA dye. Red: Actin filaments have been labeled with Alexa Fluor-555 phalloidin.



Flow cytometric analysis of A549 cells using IKK $\alpha$  Monoclonal Antibody (blue) and negative control (red).