

## KLHL11 Monoclonal Antibody

<b>Catalog No :</b>	YM0398
<b>Reactivity :</b>	Human
<b>Applications :</b>	WB;IF;FCM;ELISA
<b>Target :</b>	KLHL11
<b>Gene Name :</b>	KLHL11
<b>Protein Name :</b>	Kelch-like protein 11
<b>Human Gene Id :</b>	55175
<b>Human Swiss Prot No :</b>	Q9NVR0
<b>Mouse Swiss Prot No :</b>	Q8CE33
<b>Immunogen :</b>	Purified recombinant fragment of human KLHL11 expressed in E. Coli.
<b>Specificity :</b>	KLHL11 Monoclonal Antibody detects endogenous levels of KLHL11 protein.
<b>Formulation :</b>	Liquid in PBS containing 50% glycerol, 0.5% BSA and 0.02% sodium azide.
<b>Source :</b>	Monoclonal, Mouse
<b>Dilution :</b>	WB 1:500 - 1:2000. IF 1:200 - 1:1000. Flow cytometry: 1:200 - 1:400. ELISA: 1:10000. Not yet tested in other applications.
<b>Purification :</b>	Affinity purification
<b>Storage Stability :</b>	-15°C to -25°C/1 year(Do not lower than -25°C)
<b>Molecularweight :</b>	80kD
<b>P References :</b>	<ol style="list-style-type: none"><li>1. Gerhard DS, et al. Genome Res, 2004 Oct.</li><li>2. Ota T, et al. Nat Genet, 2004 Jan.</li><li>3. Strausberg RL, et al. Proc Natl Acad Sci U S A, 2002 Dec 24.</li></ol>

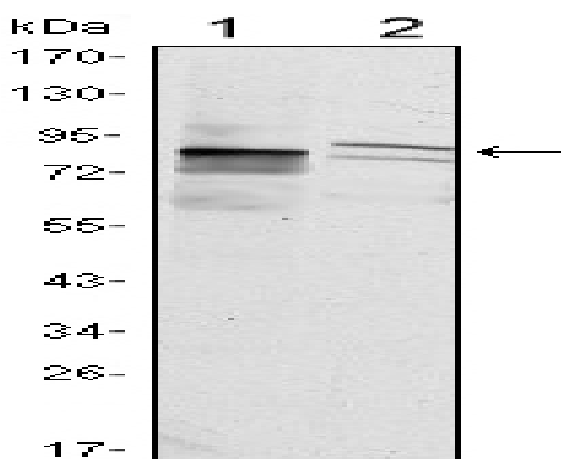
**Background :** similarity:Contains 1 BACK (BTB/Kelch associated) domain.,similarity:Contains 1 BTB (POZ) domain.,similarity:Contains 5 Kelch repeats.,

**Function :** similarity:Contains 1 BACK (BTB/Kelch associated) domain.,similarity:Contains 1 BTB (POZ) domain.,similarity:Contains 5 Kelch repeats.,

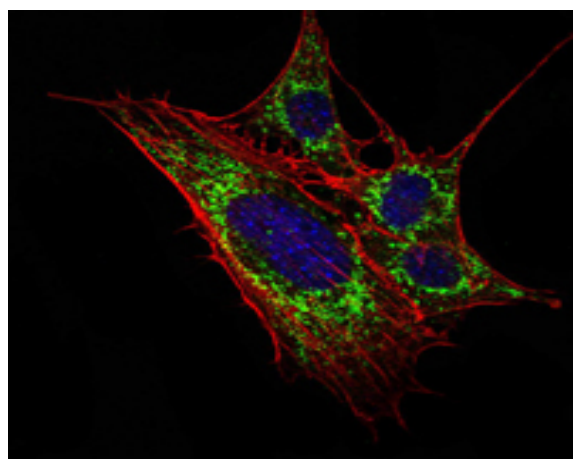
**Subcellular Location :** cytoplasm,SCF ubiquitin ligase complex,

**Expression :** Testis,

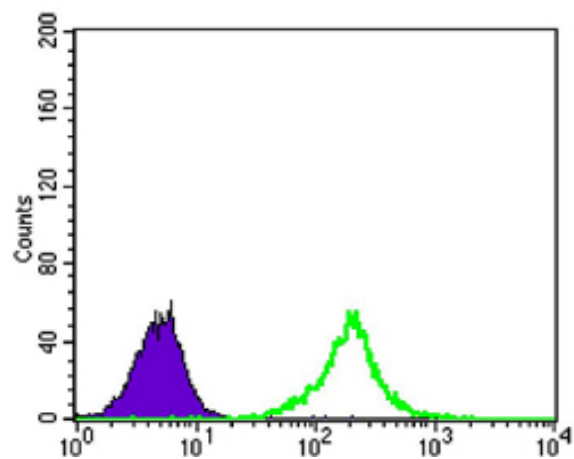
## Products Images



Western Blot analysis using KLHL11 Monoclonal Antibody against HeLa (1) and MCF-7 (2) cell lysate.



Immunofluorescence analysis of 3T3-L1 cells using KLHL11 Monoclonal Antibody (green). Blue: DRAQ5 fluorescent DNA dye. Red: Actin filaments have been labeled with Alexa Fluor-555 phalloidin.



Flow cytometric analysis of K562 cells using KLHL11 Monoclonal Antibody (green) and negative control (purple).