

**KLHL21 Monoclonal Antibody**

<b>Catalog No :</b>	YM0402
<b>Reactivity :</b>	Human
<b>Applications :</b>	WB;IHC;IF;ELISA
<b>Target :</b>	KLHL21
<b>Gene Name :</b>	KLHL21
<b>Protein Name :</b>	Kelch-like protein 21
<b>Human Gene Id :</b>	9903
<b>Human Swiss Prot No :</b>	Q9UJP4
<b>Mouse Swiss Prot No :</b>	Q3U410
<b>Immunogen :</b>	Purified recombinant fragment of human KLHL21 expressed in E. Coli.
<b>Specificity :</b>	KLHL21 Monoclonal Antibody detects endogenous levels of KLHL21 protein.
<b>Formulation :</b>	Liquid in PBS containing 50% glycerol, 0.5% BSA and 0.02% sodium azide.
<b>Source :</b>	Monoclonal, Mouse
<b>Dilution :</b>	WB 1:500 - 1:2000. IHC 1:200 - 1:1000. ELISA: 1:10000.. IF 1:50-200
<b>Purification :</b>	Affinity purification
<b>Storage Stability :</b>	-15°C to -25°C/1 year(Do not lower than -25°C)
<b>Molecularweight :</b>	67kD
<b>P References :</b>	1. DNA Res. 1997 Oct 31;4(5):345-9. 2. DNA Res. 2005;12(2):117-26. 3. J Cell Biol. 2009 Dec 14;187(6):791-800.

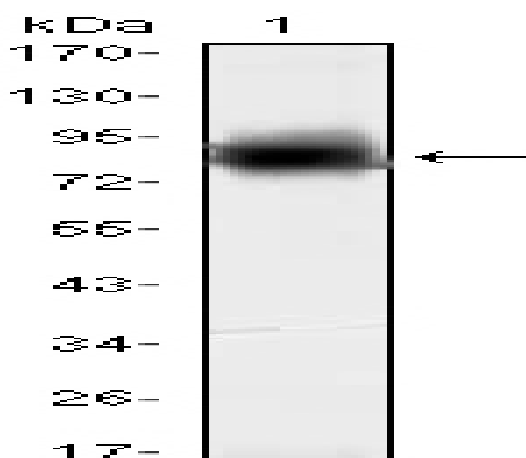
**Background :** function:Probable substrate-specific adapter of an E3 ubiquitin-protein ligase complex which mediates the ubiquitination and subsequent proteasomal degradation of target proteins.,pathway:Protein modification; protein ubiquitination.,similarity:Contains 1 BACK (BTB/Kelch associated) domain.,similarity:Contains 1 BTB (POZ) domain.,similarity:Contains 6 Kelch repeats.,subunit:Interacts with cul3.,

**Function :** function:Probable substrate-specific adapter of an E3 ubiquitin-protein ligase complex which mediates the ubiquitination and subsequent proteasomal degradation of target proteins.,pathway:Protein modification; protein ubiquitination.,similarity:Contains 1 BACK (BTB/Kelch associated) domain.,similarity:Contains 1 BTB (POZ) domain.,similarity:Contains 6 Kelch repeats.,subunit:Interacts with cul3.,

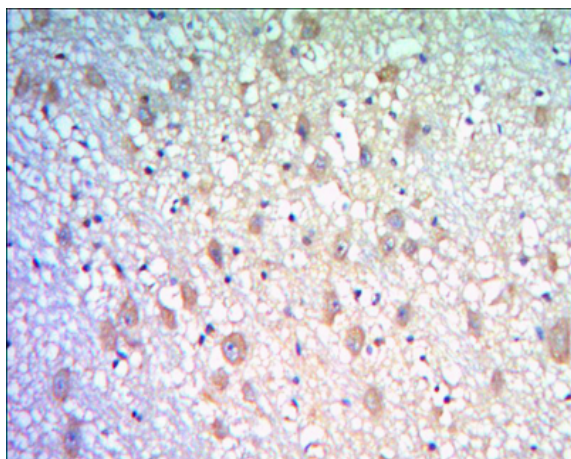
**Subcellular Location :** Cytoplasm, cytoskeleton, spindle . Localizes to the spindle midzone and targets CUL3 to this region.

**Expression :** Brain,Hepatoma,Hippocampus,Lung carcinoma,PCR rescued clones,Spleen,

## Products Images



Western Blot analysis using KLHL21 Monoclonal Antibody against recombinant KLHL21 protein (1).



Immunohistochemistry analysis of paraffin-embedded human brain tissues with DAB staining using KLHL21 Monoclonal Antibody.