

## KLHL22 Monoclonal Antibody

<b>Catalog No :</b>	YM0403
<b>Reactivity :</b>	Human
<b>Applications :</b>	WB;IF;ELISA
<b>Target :</b>	KLHL22
<b>Gene Name :</b>	KLHL22
<b>Protein Name :</b>	Kelch-like protein 22
<b>Human Gene Id :</b>	84861
<b>Human Swiss Prot No :</b>	Q53GT1
<b>Mouse Swiss Prot No :</b>	Q99JN2
<b>Immunogen :</b>	Purified recombinant fragment of human KLHL22 expressed in E. Coli.
<b>Specificity :</b>	KLHL22 Monoclonal Antibody detects endogenous levels of KLHL22 protein.
<b>Formulation :</b>	Liquid in PBS containing 50% glycerol, 0.5% BSA and 0.02% sodium azide.
<b>Source :</b>	Monoclonal, Mouse
<b>Dilution :</b>	WB 1:500 - 1:2000. IF 1:200 - 1:1000. ELISA: 1:10000. Not yet tested in other applications.
<b>Purification :</b>	Affinity purification
<b>Storage Stability :</b>	-15°C to -25°C/1 year(Do not lower than -25°C)
<b>Molecularweight :</b>	72kD
<b>P References :</b>	1. Gene. 1994 Jan 28;138(1-2):171-4. 2. Nat Genet. 2004 Jan;36(1):40-5. 3. Cell. 2009 Jul 23;138(2):389-403.

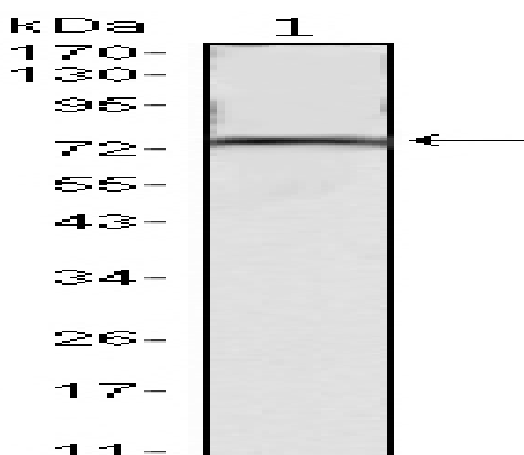
**Background :** similarity:Contains 1 BTB (POZ) domain.,similarity:Contains 6 Kelch repeats.,

**Function :** similarity:Contains 1 BTB (POZ) domain.,similarity:Contains 6 Kelch repeats.,

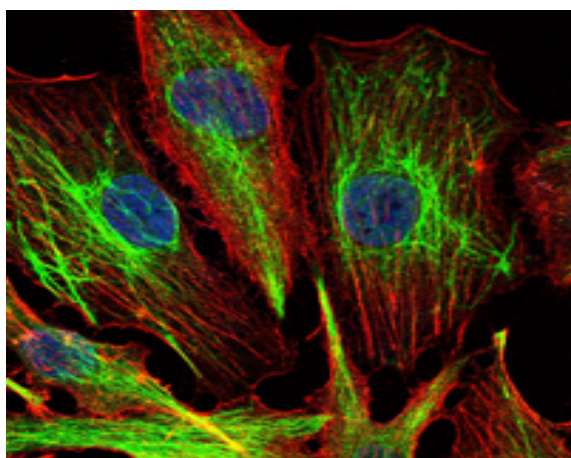
**Subcellular Location :** Cytoplasm, cytosol . Cytoplasm, cytoskeleton, microtubule organizing center, centrosome . Cytoplasm, cytoskeleton, spindle . Nucleus . Lysosome . Mainly cytoplasmic in prophase and prometaphase. Associates with the mitotic spindle as the cells reach chromosome bi-orientation. Localizes to the centrosomes shortly before cells enter anaphase After anaphase onset, predominantly associates with the polar microtubules connecting the 2 opposing centrosomes and gradually diffuses into the cytoplasm during telophase (PubMed:23455478). Localizes to the nucleus upon amino acid starvation (PubMed:29769719). Relocalizes to the cytosol and associates with lysosomes when amino acids are available (PubMed:29769719). .

**Expression :** Embryo,Kidney,Liver,

## Products Images



Western Blot analysis using KLHL22 Monoclonal Antibody against mouse brain tissues lysate.



Immunofluorescence analysis of U251 cells using KLHL22 Monoclonal Antibody (green). Blue: DRAQ5 fluorescent DNA dye. Red: Actin filaments have been labeled with Alexa Fluor-555 phalloidin.