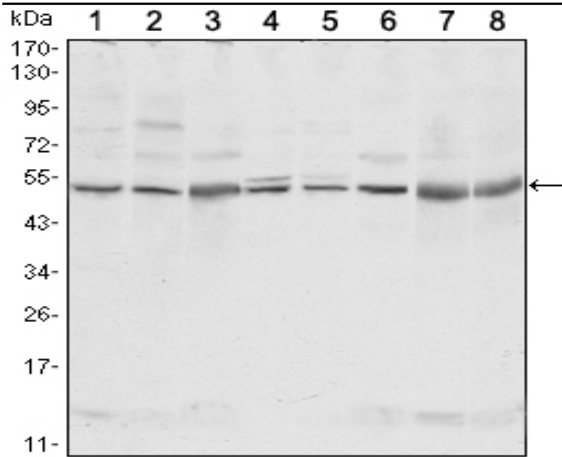


Csk Monoclonal Antibody

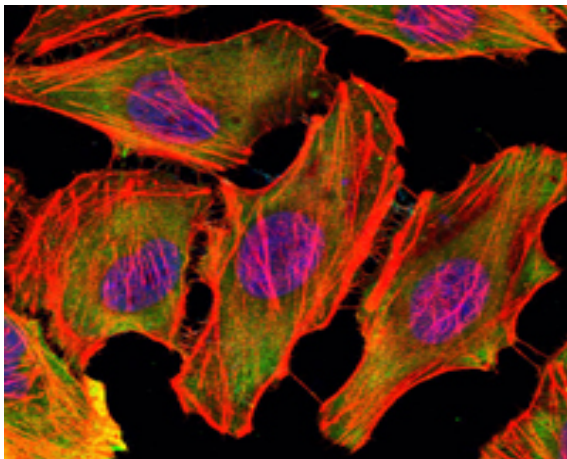
| | |
|------------------------------|--|
| Catalog No : | YM0170 |
| Reactivity : | Human;Mouse;Rat;Monkey |
| Applications : | WB;IF;FCM;ELISA |
| Target : | Csk |
| Fields : | >>Epithelial cell signaling in Helicobacter pylori infection |
| Gene Name : | CSK |
| Protein Name : | Tyrosine-protein kinase CSK |
| Human Gene Id : | 1445 |
| Human Swiss Prot No : | P41240 |
| Mouse Gene Id : | 12988 |
| Mouse Swiss Prot No : | P41241 |
| Rat Gene Id : | 315707 |
| Rat Swiss Prot No : | P32577 |
| Immunogen : | Purified recombinant fragment of human Csk expressed in E. Coli. |
| Specificity : | Csk Monoclonal Antibody detects endogenous levels of Csk protein. |
| Formulation : | Liquid in PBS containing 50% glycerol, 0.5% BSA and 0.02% sodium azide. |
| Source : | Monoclonal, Mouse |
| Dilution : | WB 1:500 - 1:2000. IF 1:200 - 1:1000. Flow cytometry: 1:200 - 1:400. ELISA: 1:10000. Not yet tested in other applications. |

| | |
|-------------------------------|---|
| Purification : | Affinity purification |
| Storage Stability : | -15°C to -25°C/1 year(Do not lower than -25°C) |
| Molecularweight : | 51kD |
| Cell Pathway : | Chemokine;Neurotrophin;Regulates Actin and Cytoskeleton;Epithelial cell signaling in Helicobacter pylori infection; |
| P References : | <ol style="list-style-type: none">1. Nat Genet. 2009 Jun;41(6):677-87.2. Leuk Res. 2009 Sep;33(9):e168-9.3. J Hypertens. 2011 Jan;29(1):62-9. |
| Background : | <p>catalytic activity:ATP + a [protein]-L-tyrosine = ADP + a [protein]-L-tyrosine phosphate.,function:Specifically phosphorylates 'Tyr-504' on LCK, which acts as a negative regulatory site. Can also act on the LYN and FYN kinases.,PTM:Autophosphorylation of Tyr-304 occurs only at abnormally high CSK concentrations in vitro.,similarity:Belongs to the protein kinase superfamily. Tyr protein kinase family.,similarity:Belongs to the protein kinase superfamily. Tyr protein kinase family. CSK subfamily.,similarity:Contains 1 protein kinase domain.,similarity:Contains 1 SH2 domain.,similarity:Contains 1 SH3 domain.,subcellular location:Mainly cytoplasmic, also present in lipid rafts.,subunit:Interacts with PTPN8 (By similarity). Interacts with phosphorylated SIT1, PAG1, LIME1 and TGFB111.,tissue specificity:Expressed in lung and macrophages.,</p> |
| Function : | <p>catalytic activity:ATP + a [protein]-L-tyrosine = ADP + a [protein]-L-tyrosine phosphate.,function:Specifically phosphorylates 'Tyr-504' on LCK, which acts as a negative regulatory site. Can also act on the LYN and FYN kinases.,PTM:Autophosphorylation of Tyr-304 occurs only at abnormally high CSK concentrations in vitro.,similarity:Belongs to the protein kinase superfamily. Tyr protein kinase family.,similarity:Belongs to the protein kinase superfamily. Tyr protein kinase family. CSK subfamily.,similarity:Contains 1 protein kinase domain.,similarity:Contains 1 SH2 domain.,similarity:Contains 1 SH3 domain.,subcellular location:Mainly cytoplasmic, also present in lipid rafts.,subunit:Interacts with PTPN8 (By similarity). Interacts with phosphorylated SIT1, PAG1, LIME1 and TGFB111.,tissue specificity:Expressed in lung and macrophages.,</p> |
| Subcellular Location : | Cytoplasm . Cell membrane . Mainly cytoplasmic, also present in lipid rafts. . |
| Expression : | Expressed in lung and macrophages. |

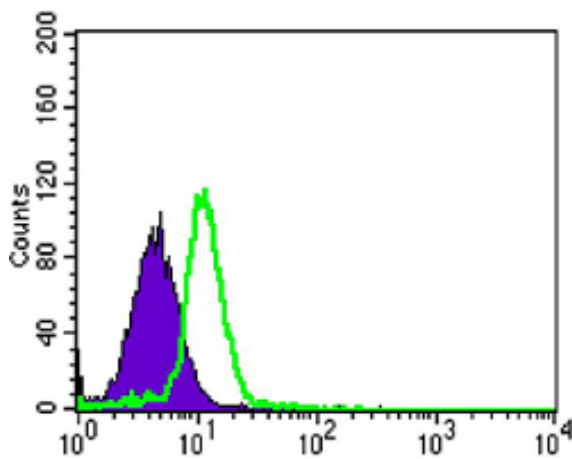
Products Images



Western Blot analysis using Csk Monoclonal Antibody against NIH/3T3 (1), HeLa (2), COS7 (3), Jurkat (4), Raw246.7 (5), A549 (6), HL-60 (7) and PC-12 (8) cell lysate.



Immunofluorescence analysis of U251 cells using Csk Monoclonal Antibody (green). Blue: DRAQ5 fluorescent DNA dye. Red: Actin filaments have been labeled with Alexa Fluor-555 phalloidin



Flow cytometric analysis of HL-60 cells using Csk Monoclonal Antibody (green) and negative control (purple).