

EphA10 Monoclonal Antibody

Catalog No :	YM0221
Reactivity :	Human
Applications :	WB;ELISA
Target :	EphA10
Gene Name :	EPHA10
Protein Name :	Ephrin type-A receptor 10
Human Gene Id :	284656
Human Swiss Prot No :	Q5JZY3
Mouse Swiss Prot No :	Q8BYG9
Immunogen :	Purified recombinant fragment of human EphA10 expressed in E. Coli.
Specificity :	EphA10 Monoclonal Antibody detects endogenous levels of EphA10 protein.
Formulation :	Liquid in PBS containing 50% glycerol, 0.5% BSA and 0.02% sodium azide.
Source :	Monoclonal, Mouse
Dilution :	WB 1:500 - 1:2000. ELISA: 1:10000. Not yet tested in other applications.
Purification :	Affinity purification
Storage Stability :	-15°C to -25°C/1 year(Do not lower than -25°C)
Molecularweight :	110kD
P References :	1. Biochem Cell Biol. 2011 Apr;89(2):115-29. 2. Leuk Res. 2009 Mar;33(3):395-406.

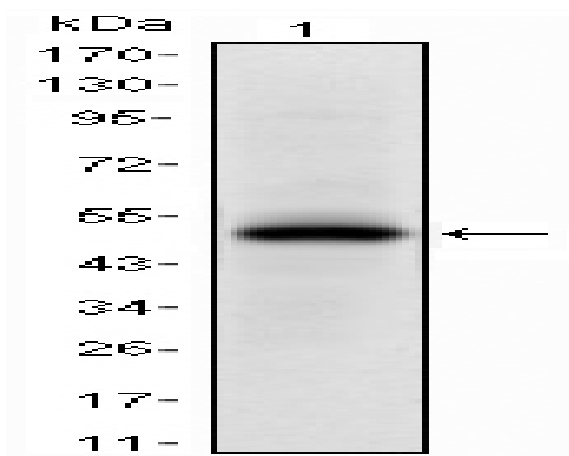
Background : Ephrin receptors, the largest subfamily of receptor tyrosine kinases (RTKs), and their ephrin ligands are important mediators of cell-cell communication regulating cell attachment, shape, and mobility in neuronal and epithelial cells (Aasheim et al., 2005 [PubMed 15777695]). See MIM 179610 for additional background on Eph receptors and ephrins.[supplied by OMIM, Mar 2008],

Function : catalytic activity:ATP + a [protein]-L-tyrosine = ADP + a [protein]-L-tyrosine phosphate.,domain:The protein kinase domain is predicted to be catalytically inactive.,function:Receptor for members of the ephrin-A family. Binds to EFNA3, EFNA4 and EFNA5.,similarity:Belongs to the protein kinase superfamily. Tyr protein kinase family. Ephrin receptor subfamily.,similarity:Contains 1 protein kinase domain.,similarity:Contains 1 SAM (sterile alpha motif) domain.,similarity:Contains 2 fibronectin type-III domains.,tissue specificity:Mainly expressed in testis.,

Subcellular Location : [Isoform 1]: Cell membrane ; Single-pass type I membrane protein .; [Isoform 3]: Cell membrane ; Single-pass type I membrane protein .; [Isoform 2]: Secreted .

Expression : Mainly expressed in testis.

Products Images



Western Blot analysis using EphA10 Monoclonal Antibody against human EphA10 (AA: 34-295) recombinant protein.

