

Pirh2 Monoclonal Antibody

Catalog No :	YM0521
Reactivity :	Human;Rat
Applications :	WB;IHC;IF;FCM;ELISA
Target :	Pirh2
Fields :	>>p53 signaling pathway;>>Ubiquitin mediated proteolysis;>>Measles
Gene Name :	RCHY1
Protein Name :	RING finger and CHY zinc finger domain-containing protein 1
Human Gene Id :	25898
Human Swiss Prot No :	Q96PM5
Mouse Swiss Prot No :	Q9CR50
Immunogen :	Purified recombinant fragment of human Pirh2 expressed in E. Coli.
Specificity :	Pirh2 Monoclonal Antibody detects endogenous levels of Pirh2 protein.
Formulation :	Liquid in PBS containing 50% glycerol, 0.5% BSA and 0.02% sodium azide.
Source :	Monoclonal, Mouse
Dilution :	WB 1:500 - 1:2000. IHC 1:200 - 1:1000. IF 1:200 - 1:1000. Flow cytometry: 1:200 - 1:400. ELISA: 1:10000. Not yet tested in other applications.
Purification :	Affinity purification
Storage Stability :	-15°C to -25°C/1 year(Do not lower than -25°C)
Molecularweight :	30kD

Cell Pathway : p53;Ubiquitin mediated proteolysis;

P References :

1. Biochem Biophys Res Commun. 2007 Dec 14;364(2):344-50.
2. J Natl Cancer Inst. 2004 Nov 17;96(22):1718-21.
3. Exp Cell Res. 2006 Oct 15;312(17):3370-8.
4. Cell. 2003 Mar 21;112(6):779-91

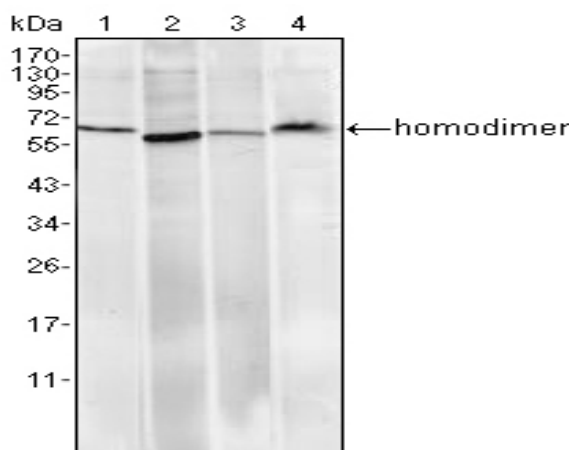
Background : The protein encoded by this gene has ubiquitin ligase activity. It mediates E3-dependent ubiquitination and proteasomal degradation of target proteins, including tumor protein 53, histone deacetylase 1, and cyclin-dependent kinase inhibitor 1B, thus regulating their levels and cell cycle progression. Alternatively spliced transcript variants encoding different isoforms have been described for this gene. [provided by RefSeq, Jun 2013],

Function : similarity:Contains 1 CHY-type zinc finger.,similarity:Contains 1 CTCHY-type zinc finger.,similarity:Contains 1 RING-type zinc finger.,subunit:Interacts with AR, PLAG1 and SCYL1BP1/NTKLBP1.,

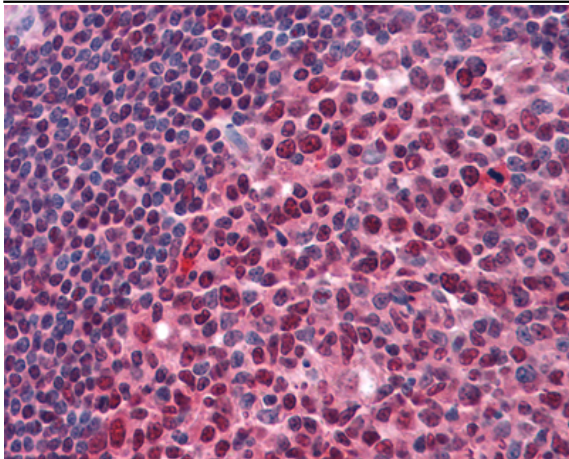
Subcellular Location : Nucleus. Nucleus speckle. Cytoplasm.

Expression : Liver,Platelet,Skin,Uterus,

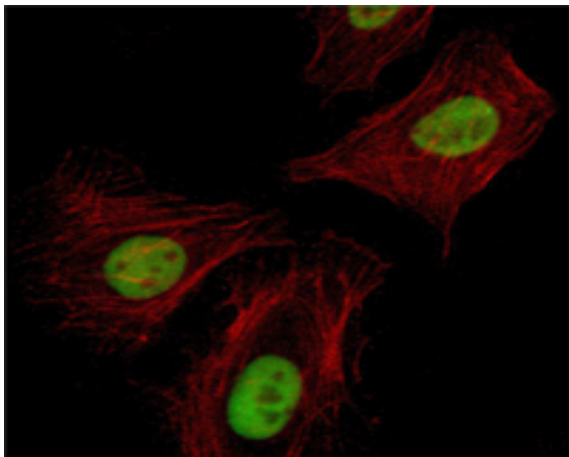
Products Images



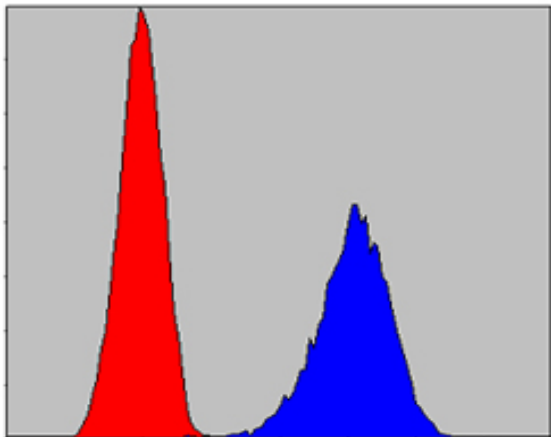
Western Blot analysis using Pirh2 Monoclonal Antibody against HeLa (1), A549 (2), MCF-7 (3) and PC-12 (4) cell lysate.



Immunohistochemistry analysis of paraffin-embedded human Tonsil tissues with AEC staining using Pirh2 Monoclonal Antibody.



Immunofluorescence analysis of Hela cells using Pirh2 Monoclonal Antibody (green). Red: Actin filaments have been labeled with Alexa Fluor-555 phalloidin.



Flow cytometric analysis of PC-12 cells using Pirh2 Monoclonal Antibody (blue) and negative control (red).