

## IL-11 Monoclonal Antibody

<b>Catalog No :</b>	YM0366
<b>Reactivity :</b>	Human
<b>Applications :</b>	WB;ELISA
<b>Target :</b>	IL-11
<b>Fields :</b>	>>Cytokine-cytokine receptor interaction;>>JAK-STAT signaling pathway;>>Hematopoietic cell lineage;>>Rheumatoid arthritis
<b>Gene Name :</b>	IL11
<b>Protein Name :</b>	Interleukin-11
<b>Human Gene Id :</b>	3589
<b>Human Swiss Prot No :</b>	P20809
<b>Mouse Swiss Prot No :</b>	P47873
<b>Immunogen :</b>	Purified recombinant fragment of human IL-11 expressed in E. Coli.
<b>Specificity :</b>	IL-11 Monoclonal Antibody detects endogenous levels of IL-11 protein.
<b>Formulation :</b>	Liquid in PBS containing 50% glycerol, 0.5% BSA and 0.02% sodium azide.
<b>Source :</b>	Monoclonal, Mouse
<b>Dilution :</b>	WB 1:500 - 1:2000. ELISA: 1:10000. Not yet tested in other applications.
<b>Purification :</b>	Affinity purification
<b>Concentration :</b>	1 mg/ml
<b>Storage Stability :</b>	-15°C to -25°C/1 year(Do not lower than -25°C)

**Molecularweight :** 21kD

**Cell Pathway :** Cytokine-cytokine receptor interaction;Jak\_STAT;Hematopoietic cell lineage;

**P References :**

1. Cockrell EM, et.al Cytokine. 2004 Oct 21;28(2):55-8.
2. Dimitriadis E, et.al J Clin Endocrinol Metab. 2005 Jun;90(6):3458-65. Epub 2005 Mar 22.

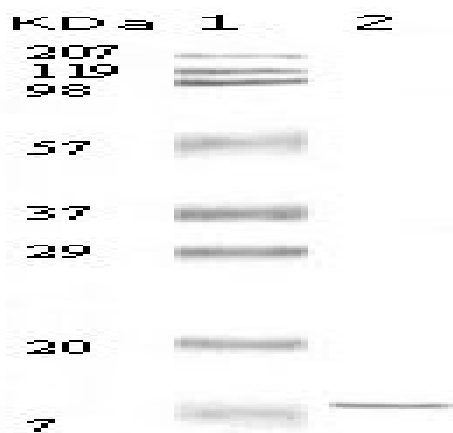
**Background :** The protein encoded by this gene is a member of the gp130 family of cytokines. These cytokines drive the assembly of multisubunit receptor complexes, all of which contain at least one molecule of the transmembrane signaling receptor IL6ST (gp130). This cytokine is shown to stimulate the T-cell-dependent development of immunoglobulin-producing B cells. It is also found to support the proliferation of hematopoietic stem cells and megakaryocyte progenitor cells. Alternatively spliced transcript variants encoding distinct isoforms have been found for this gene. [provided by RefSeq, Jun 2012],

**Function :** function:Directly stimulates the proliferation of hematopoietic stem cells and megakaryocyte progenitor cells and induces megakaryocyte maturation resulting in increased platelet production.,online information:Clinical information on Neumega,online information:Interleukin-11 entry,pharmaceutical:Available under the name Neumega (Wyeth). Used for the prevention of severe thrombocytopenia and the reduction of the need for platelet transfusion following myelosuppressive chemotherapy.,similarity:Belongs to the IL-6 superfamily.,

**Subcellular Location :** Secreted .

**Expression :** Bone marrow,Prostate,

## Products Images



Western Blot analysis using IL-11 Monoclonal Antibody against truncated IL-11 recombinant protein.