

## JAK2 Monoclonal Antibody

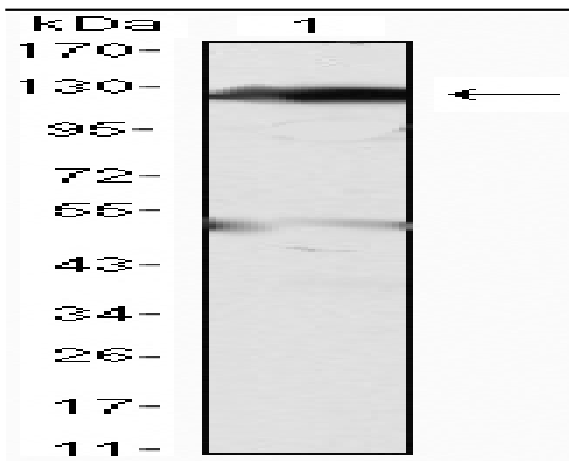
<b>Catalog No :</b>	YM0385
<b>Reactivity :</b>	Human
<b>Applications :</b>	WB;ELISA
<b>Target :</b>	JAK2
<b>Fields :</b>	>>EGFR tyrosine kinase inhibitor resistance;>>Chemokine signaling pathway;>>PI3K-Akt signaling pathway;>>Necroptosis;>>Signaling pathways regulating pluripotency of stem cells;>>JAK-STAT signaling pathway;>>Th1 and Th2 cell differentiation;>>Th17 cell differentiation;>>Cholinergic synapse;>>Prolactin signaling pathway;>>Adipocytokine signaling pathway;>>AGE-RAGE signaling pathway in diabetic complications;>>Growth hormone synthesis, secretion and action;>>Leishmaniasis;>>Toxoplasmosis;>>Tuberculosis;>>Hepatitis B;>>Influenza A;>>Kaposi sarcoma-associated herpesvirus infection;>>Herpes simplex virus 1 infection;>>Pathways in cancer;>>Chemical carcinogenesis - receptor activation;>>PD-L1 expression and PD-1 checkpoint pathway in cancer;>>Lipid and atherosclerosis
<b>Gene Name :</b>	JAK2
<b>Protein Name :</b>	Tyrosine-protein kinase JAK2
<b>Human Gene Id :</b>	3717
<b>Human Swiss Prot No :</b>	O60674
<b>Mouse Swiss Prot No :</b>	Q62120
<b>Immunogen :</b>	Purified recombinant fragment of JAK2 (745-955aa) expressed in E. Coli.
<b>Specificity :</b>	JAK2 Monoclonal Antibody detects endogenous levels of JAK2 protein.
<b>Formulation :</b>	Liquid in PBS containing 50% glycerol, 0.5% BSA and 0.02% sodium azide.
<b>Source :</b>	Monoclonal, Mouse

---

<b>Dilution :</b>	WB 1:500 - 1:2000. ELISA: 1:10000. Not yet tested in other applications.
<b>Purification :</b>	Affinity purification
<b>Storage Stability :</b>	-15°C to -25°C/1 year(Do not lower than -25°C)
<b>Molecularweight :</b>	131kD
<b>Cell Pathway :</b>	Chemokine;Jak_STAT;Adipocytokine;
<b>P References :</b>	<ol style="list-style-type: none"><li>1. Mol Cell Endocrinol. 1997 May 16;129(2):199-208.</li><li>2. J Immunol. 1999 Dec 15;163(12):6651-8.</li><li>3. J Biol Chem. 1999 Oct 29;274(44):31531-42.</li></ol>
<b>Background :</b>	This gene product is a protein tyrosine kinase involved in a specific subset of cytokine receptor signaling pathways. It has been found to be constitutively associated with the prolactin receptor and is required for responses to gamma interferon. Mice that do not express an active protein for this gene exhibit embryonic lethality associated with the absence of definitive erythropoiesis. [provided by RefSeq, Jul 2008],
<b>Function :</b>	catalytic activity:ATP + a [protein]-L-tyrosine = ADP + a [protein]-L-tyrosine phosphate.,disease:Chromosomal aberrations involving JAK2 are found in both chronic and acute forms of eosinophilic, lymphoblastic and myeloid leukemia. Translocation t(8;9)(p22;p24) with PCM1 links the protein kinase domain of JAK2 to the major portion of PCM1. Translocation t(9;12)(p24;p13) with ETV6.,disease:Defects in JAK2 are a cause of acute myelogenous leukemia (AML) [MIM:601626]. AML is a malignant disease in which hematopoietic precursors are arrested in an early stage of development.,disease:Defects in JAK2 are a cause of susceptibility to Budd-Chiari syndrome [MIM:600880]. Budd-Chiari syndrome is a spectrum of disease states, including anatomic abnormalities and hypercoagulable disorders, resulting in hepatic venous outflow occlusion. Clinical manifestations observed in the majority of patients incl
<b>Subcellular Location :</b>	Endomembrane system ; Peripheral membrane protein . Cytoplasm . Nucleus .
<b>Expression :</b>	Ubiquitously expressed throughout most tissues.

---

## Products Images



Western Blot analysis using JAK2 Monoclonal Antibody against THP-1(1) cell lysate.