

## NPT1 Monoclonal Antibody

<b>Catalog No :</b>	YM0481
<b>Reactivity :</b>	Human
<b>Applications :</b>	WB;ELISA
<b>Target :</b>	NPT1
<b>Gene Name :</b>	SLC17A1
<b>Protein Name :</b>	Sodium-dependent phosphate transport protein 1
<b>Human Gene Id :</b>	6568
<b>Human Swiss Prot No :</b>	Q14916
<b>Mouse Swiss Prot No :</b>	Q61983
<b>Immunogen :</b>	Purified recombinant fragment of NPT1 expressed in E. Coli.
<b>Specificity :</b>	NPT1 Monoclonal Antibody detects endogenous levels of NPT1 protein.
<b>Formulation :</b>	Liquid in PBS containing 50% glycerol, 0.5% BSA and 0.02% sodium azide.
<b>Source :</b>	Monoclonal, Mouse
<b>Dilution :</b>	WB 1:500 - 1:2000. ELISA: 1:10000. Not yet tested in other applications.
<b>Purification :</b>	Affinity purification
<b>Storage Stability :</b>	-15°C to -25°C/1 year(Do not lower than -25°C)
<b>Molecularweight :</b>	51kD
<b>P References :</b>	<ol style="list-style-type: none"><li>1. Landis WG et.al Human and ecological Risk Assessment 6(5): 875-899.</li><li>2. Stewart CN et.al BioTechniques 29(4): 832-843.</li><li>3. Thomson JA et.al Journal of Food Science 66(2): 188-193.</li></ol>

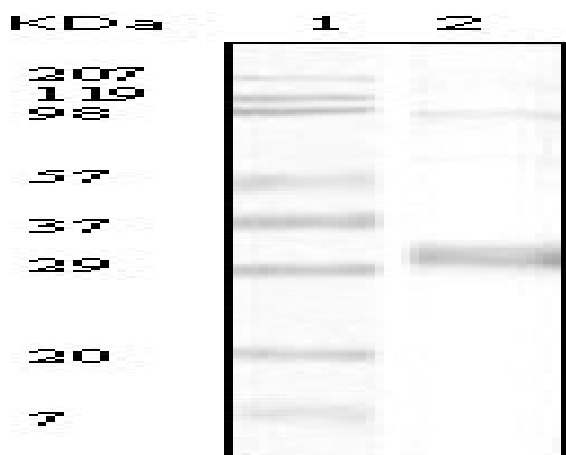
**Background :** caution:It is uncertain whether Met-1 or Met-3 is the initiator.,function:Important for the resorption of phosphate by the kidney. May be involved in actively transporting phosphate into cells via Na(+) cotransport in the renal brush border membrane.,similarity:Belongs to the major facilitator superfamily. Sodium/anion cotransporter family.,subunit:Interacts with PDZK1.,tissue specificity:Expressed in kidney cortex, liver and brain but not in other tissues.,

**Function :** caution:It is uncertain whether Met-1 or Met-3 is the initiator.,function:Important for the resorption of phosphate by the kidney. May be involved in actively transporting phosphate into cells via Na(+) cotransport in the renal brush border membrane.,similarity:Belongs to the major facilitator superfamily. Sodium/anion cotransporter family.,subunit:Interacts with PDZK1.,tissue specificity:Expressed in kidney cortex, liver and brain but not in other tissues.,

**Subcellular Location :** Apical cell membrane ; Multi-pass membrane protein .

**Expression :** Expressed in kidney cortex, liver and brain but not in other tissues.

## Products Images



Western Blot analysis using NPT1 Monoclonal Antibody against truncated NPT1 recombinant protein.