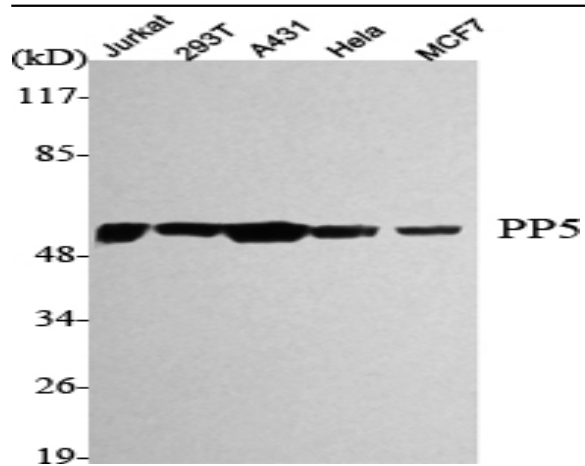


PP5 Monoclonal Antibody

Catalog No :	YM1081
Reactivity :	Human;Mouse;Rat
Applications :	WB
Target :	PP5
Fields :	>>MAPK signaling pathway
Gene Name :	PPP5C
Protein Name :	Serine/threonine-protein phosphatase 5
Human Gene Id :	5536
Human Swiss Prot No :	P53041
Mouse Gene Id :	19060
Mouse Swiss Prot No :	Q60676
Rat Gene Id :	65179
Rat Swiss Prot No :	P53042
Immunogen :	Purified recombinant human PP5 protein fragments expressed in E.coli.
Specificity :	PP5 Monoclonal Antibody detects endogenous levels of PP5 protein.
Formulation :	Liquid in PBS containing 50% glycerol, 0.5% BSA and 0.02% sodium azide.
Source :	Monoclonal, Mouse
Dilution :	WB 1:1000 - 1:2000. Not yet tested in other applications.
Purification :	Affinity purification

Concentration :	1 mg/ml
Storage Stability :	-15°C to -25°C/1 year(Do not lower than -25°C)
Molecularweight :	57kD
Cell Pathway :	MAPK_ERK_Growth;MAPK_G_Protein;
Background :	<p>This gene encodes a serine/threonine phosphatase which is a member of the protein phosphatase catalytic subunit family. Proteins in this family participate in pathways regulated by reversible phosphorylation at serine and threonine residues; many of these pathways are involved in the regulation of cell growth and differentiation. The product of this gene has been shown to participate in signaling pathways in response to hormones or cellular stress, and elevated levels of this protein may be associated with breast cancer development. Alternative splicing results in multiple transcript variants. [provided by RefSeq, Feb 2011],</p>
Function :	<p>catalytic activity:A phosphoprotein + H(2)O = a protein + phosphate.,cofactor:Binds 1 iron ion per subunit.,cofactor:Binds 1 manganese ion per subunit.,function:May play a role in the regulation of RNA biogenesis and/or mitosis. In vitro, dephosphorylates serine residues of skeletal muscle phosphorylase and histone H1.,similarity:Belongs to the PPP phosphatase family.,similarity:Belongs to the PPP phosphatase family. PP-5 (PP-T) subfamily.,similarity:Contains 3 TPR repeats.,subcellular location:Predominantly nuclear. But also present in the cytoplasm.,subunit:Interacts with CDC16 and CDC27.,tissue specificity:Ubiquitous.,</p>
Subcellular Location :	<p>Nucleus . Cytoplasm . Cell membrane . Predominantly nuclear (PubMed:15383005). But also present in the cytoplasm (PubMed:15383005). Translocates from the cytoplasm to the plasma membrane in a RAC1-dependent manner (PubMed:19948726). .</p>
Expression :	Ubiquitous.

Products Images



Western Blot analysis using PP5 Monoclonal Antibody against HeLa, Jurkat, 293T, A431, MCF7 cell lysate.