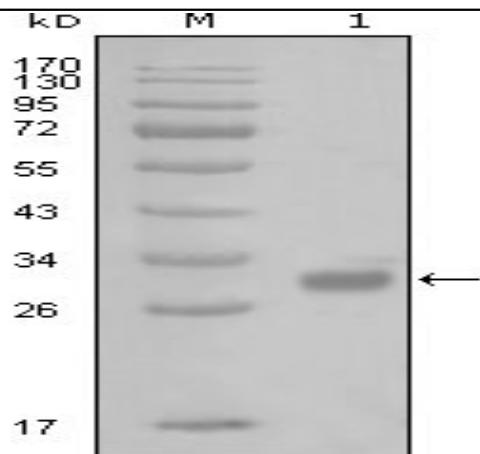


## PAR1 Monoclonal Antibody

<b>Catalog No :</b>	YM0503
<b>Reactivity :</b>	Human
<b>Applications :</b>	WB;ELISA
<b>Target :</b>	PAR1
<b>Human Gene Id :</b>	145624
<b>Human Swiss Prot No :</b>	P25116
<b>Immunogen :</b>	Purified recombinant fragment of PAR1 expressed in E. Coli.
<b>Specificity :</b>	PAR1 Monoclonal Antibody detects PAR1 protein.
<b>Formulation :</b>	Liquid in PBS containing 50% glycerol, 0.5% BSA and 0.02% sodium azide.
<b>Source :</b>	Monoclonal, Mouse
<b>Dilution :</b>	WB 1:500 - 1:2000. ELISA: 1:10000. Not yet tested in other applications.
<b>Purification :</b>	Affinity purification
<b>Storage Stability :</b>	-15°C to -25°C/1 year(Do not lower than -25°C)
<b>P References :</b>	1. Oncol Res. 2004;14(10):475-82. 2. J Cell Biochem. 2005 Oct 15;96(3):641-52.

## Products Images



Western Blot analysis using PAR1 Monoclonal Antibody against truncated GST-PAR1 recombinant protein (1).