

## Rak Monoclonal Antibody

<b>Catalog No :</b>	YM0551
<b>Reactivity :</b>	Human
<b>Applications :</b>	WB;IHC;IF;ELISA
<b>Target :</b>	Rak
<b>Gene Name :</b>	FRK
<b>Protein Name :</b>	Tyrosine-protein kinase FRK
<b>Human Gene Id :</b>	2444
<b>Human Swiss Prot No :</b>	P42685
<b>Mouse Swiss Prot No :</b>	Q922K9
<b>Immunogen :</b>	Purified recombinant fragment of Rak (aa2-300) expressed in E. Coli.
<b>Specificity :</b>	Rak Monoclonal Antibody detects endogenous levels of Rak protein.
<b>Formulation :</b>	Liquid in PBS containing 50% glycerol, 0.5% BSA and 0.02% sodium azide.
<b>Source :</b>	Monoclonal, Mouse
<b>Dilution :</b>	WB 1:500 - 1:2000. IHC 1:200 - 1:1000. ELISA: 1:10000.. IF 1:50-200
<b>Purification :</b>	Affinity purification
<b>Storage Stability :</b>	-15°C to -25°C/1 year(Do not lower than -25°C)
<b>Molecularweight :</b>	58kD
<b>P References :</b>	1. Int J Cancer. 1993 Jun 19;54(4):571-7. 2. Proc Natl Acad Sci U S A. 2002 Dec 24;99(26):16899-903. 3. Neurosci Lett. 2004 Apr 22;360(1-2):109-11.

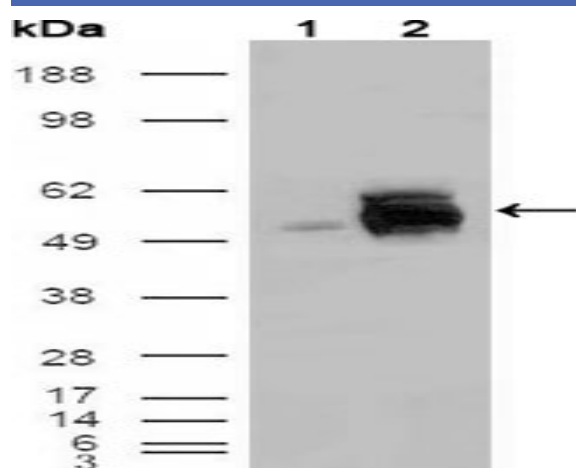
**Background :** The protein encoded by this gene belongs to the TYR family of protein kinases. This tyrosine kinase is a nuclear protein and may function during G1 and S phase of the cell cycle and suppress growth. [provided by RefSeq, Jul 2008],

**Function :** catalytic activity:ATP + a [protein]-L-tyrosine = ADP + a [protein]-L-tyrosine phosphate.,similarity:Belongs to the protein kinase superfamily. Tyr protein kinase family. SRC subfamily.,similarity:Contains 1 protein kinase domain.,similarity:Contains 1 SH2 domain.,similarity:Contains 1 SH3 domain.,tissue specificity:Restricted to cells lines derived from tissues of lymphoid, brain, breast, colon and bladder origin.,

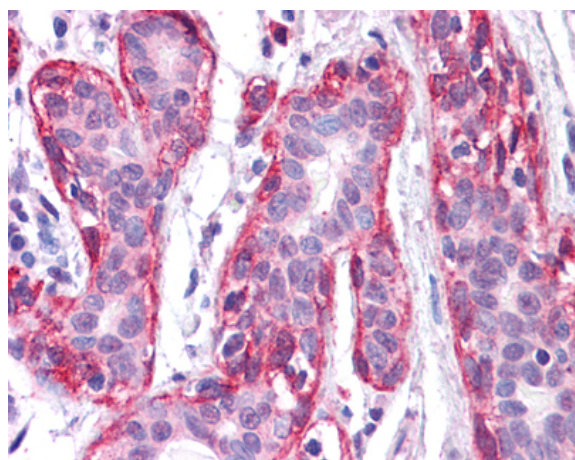
**Subcellular Location :** Cytoplasm . Nucleus . Predominantly found in the nucleus, with a small fraction found in the cell periphery.

**Expression :** Predominantly expressed in epithelial derived cell lines and tissues, especially normal liver, kidney, breast and colon.

## Products Images



Western Blot analysis using Rak Monoclonal Antibody against HEK293T cells transfected with the pCMV6-ENTRY control (1) and pCMV6-ENTRY Rak cDNA (2).



Immunohistochemistry analysis of paraffin-embedded human Breast tissues with AEC staining using Rak Monoclonal Antibody.