

## S-100A10 Monoclonal Antibody

<b>Catalog No :</b>	YM0573
<b>Reactivity :</b>	Human
<b>Applications :</b>	WB;IHC;IF;ELISA
<b>Target :</b>	S-100A10
<b>Fields :</b>	>>Salmonella infection
<b>Gene Name :</b>	S100A10
<b>Protein Name :</b>	Protein S100-A10
<b>Human Gene Id :</b>	6281
<b>Human Swiss Prot No :</b>	P60903
<b>Mouse Swiss Prot No :</b>	P08207
<b>Immunogen :</b>	Purified recombinant fragment of human S-100A10 expressed in E. Coli.
<b>Specificity :</b>	S-100A10 Monoclonal Antibody detects endogenous levels of S-100A10 protein.
<b>Formulation :</b>	Liquid in PBS containing 50% glycerol, 0.5% BSA and 0.02% sodium azide.
<b>Source :</b>	Monoclonal, Mouse
<b>Dilution :</b>	WB 1:500 - 1:2000. IHC 1:200 - 1:1000. IF 1:200 - 1:1000. ELISA: 1:10000. Not yet tested in other applications.
<b>Purification :</b>	Affinity purification
<b>Storage Stability :</b>	-15°C to -25°C/1 year(Do not lower than -25°C)
<b>Molecularweight :</b>	11kD

**P References :**

1. Svenningsson P, Greengard P. *Curr Opin Pharmacol*. 2007;7(1):27-32.
2. Santamaria-Kisiel L, Rintala-Dempsey AC, Shaw GS. *Biochem J*. 2006;396(2):201-14.
3. Rust R, VL, van dJ, Harms G,.et al.

**Background :**

The protein encoded by this gene is a member of the S100 family of proteins containing 2 EF-hand calcium-binding motifs. S100 proteins are localized in the cytoplasm and/or nucleus of a wide range of cells, and involved in the regulation of a number of cellular processes such as cell cycle progression and differentiation. S100 genes include at least 13 members which are located as a cluster on chromosome 1q21. This protein may function in exocytosis and endocytosis. [provided by RefSeq, Jul 2008],

**Function :**

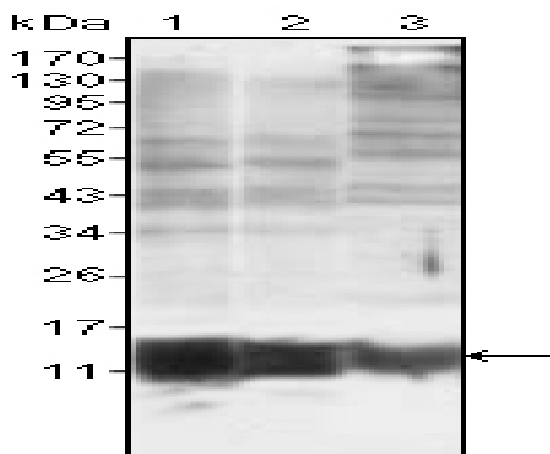
function:Because S100A10 induces the dimerization of ANXA2/p36, it may function as a regulator of protein phosphorylation in that the ANXA2 monomer is the preferred target (in vitro) of tyrosine-specific kinase.,miscellaneous:Does not appear to bind calcium. Contains 2 ancestral calcium site related to EF-hand domains that have lost their ability to bind calcium.,similarity:Belongs to the S-100 family.,subunit:Heterotetramer containing 2 light chains of S100A10/p11 and 2 heavy chains of ANXA2/p36. Interacts with SCN10A.,

**Subcellular Location :**

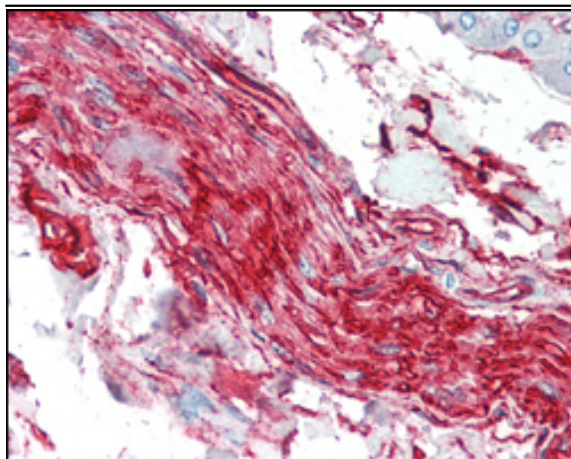
integral component of membrane,extrinsic component of plasma membrane,membrane raft,extracellular exosome,

**Expression :**

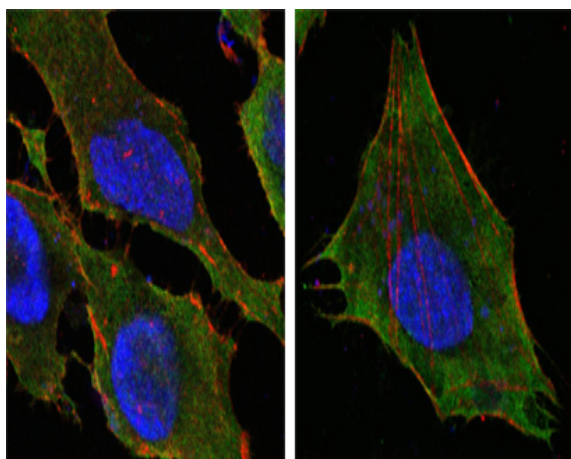
Brain,Keratinocyte,

**Products Images**

Western Blot analysis using S-100A10 Monoclonal Antibody against MCF-7 (1), HepG2 (2) and HeLa (3).



Immunohistochemistry analysis of paraffin-embedded human nerve and ganglion cells with AEC staining using S-100A10 Monoclonal Antibody.



Confocal immunofluorescence analysis of HeLa (left) and L-02 (right) cells using S-100A10 Monoclonal Antibody (green). Red: Actin filaments have been labeled with DY-554 phalloidin. Blue: DRAQ5 fluorescent DNA dye.