

SAPAP1 Monoclonal Antibody

| | |
|------------------------------|---|
| Catalog No : | YM0574 |
| Reactivity : | Human |
| Applications : | WB;IHC;IF;ELISA |
| Target : | SAPAP1 |
| Fields : | >>Glutamatergic synapse |
| Gene Name : | DLGAP1 |
| Protein Name : | Disks large-associated protein 1 |
| Human Gene Id : | 9229 |
| Human Swiss Prot No : | O14490 |
| Mouse Swiss Prot No : | Q9D415 |
| Immunogen : | Purified recombinant fragment of human SAPAP1 expressed in E. Coli. |
| Specificity : | SAPAP1 Monoclonal Antibody detects endogenous levels of SAPAP1 protein. |
| Formulation : | Liquid in PBS containing 50% glycerol, 0.5% BSA and 0.02% sodium azide. |
| Source : | Monoclonal, Mouse |
| Dilution : | WB 1:500 - 1:2000. IHC 1:200 - 1:1000. IF 1:200 - 1:1000. ELISA: 1:10000. Not yet tested in other applications. |
| Purification : | Affinity purification |
| Storage Stability : | -15°C to -25°C/1 year(Do not lower than -25°C) |
| Molecularweight : | 109kD |

P References :

1. Am J Hum Genet. 2009 Nov;85(5):628-42.
2. Genes Immun. 2010 Apr;11(3):232-8.

Background :

function:Part of the postsynaptic scaffold in neuronal cells.,similarity:Belongs to the SAPAP family.,subcellular location:Found in postsynaptic density of neuronal cells.,subunit:Interacts with guanylate kinase-like domain of DLG1, DLG2, DLG3, DLG4 and AIP1. Interacts with the PDZ domain of SHANK1, SHANK2 and SHANK3. Found in a complex with DLG4 and SHANK1, SHANK2 or SHANK3. Found in a complex with DLG4 and BEGAIN. Interacts with DYL2 and LRFN1.,tissue specificity:Expressed in brain.,

Function :

function:Part of the postsynaptic scaffold in neuronal cells.,similarity:Belongs to the SAPAP family.,subcellular location:Found in postsynaptic density of neuronal cells.,subunit:Interacts with guanylate kinase-like domain of DLG1, DLG2, DLG3, DLG4 and AIP1. Interacts with the PDZ domain of SHANK1, SHANK2 and SHANK3. Found in a complex with DLG4 and SHANK1, SHANK2 or SHANK3. Found in a complex with DLG4 and BEGAIN. Interacts with DYL2 and LRFN1.,tissue specificity:Expressed in brain.,

Subcellular Location :

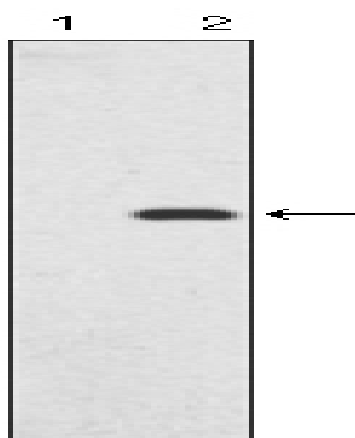
Cell membrane ; Peripheral membrane protein . Cell junction, synapse, postsynaptic density . Cell junction, synapse .

Expression :

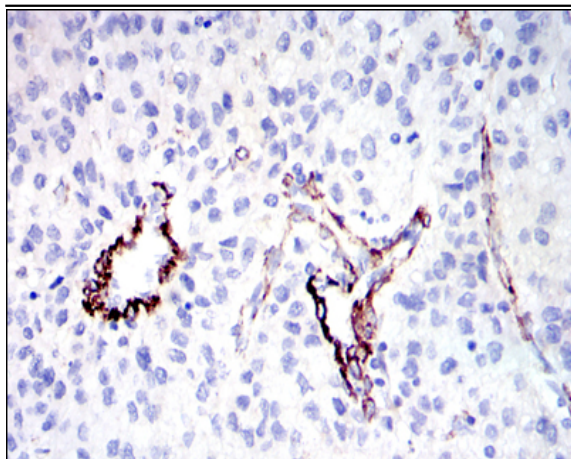
Expressed in brain.

Products Images

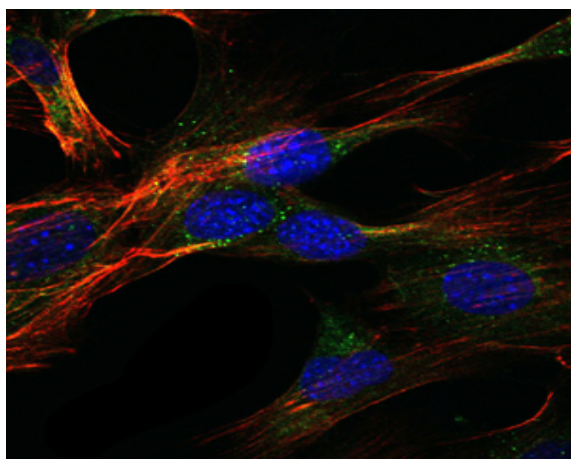
kDa
170 -
130 -
95 -
72 -
55 -
43 -
34 -
26 -
17 -
11 -



Western Blot analysis using SAPAP1 Monoclonal Antibody against HEK293 (1) and GKAP-hlgGfC transfected HEK293 (2) cell lysate.



Immunohistochemistry analysis of paraffin-embedded human liver cancer tissues with DAB staining using SAPAP1 Monoclonal Antibody.



Immunofluorescence analysis of NIH/3T3 cells using SAPAP1 Monoclonal Antibody (green). Blue: DRAQ5 fluorescent DNA dye. Red: Actin filaments have been labeled with Alexa Fluor-555 phalloidin.

