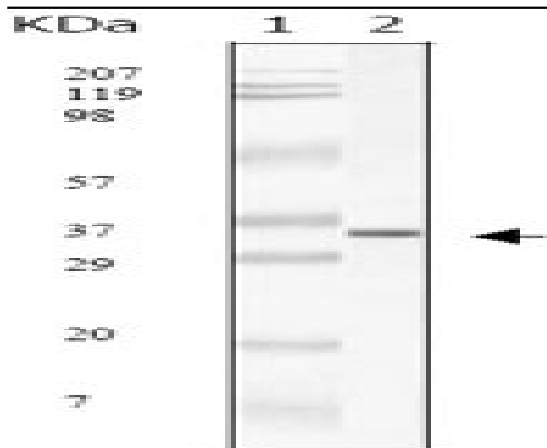


## SARS-M Monoclonal Antibody

<b>Catalog No :</b>	YM0576
<b>Reactivity :</b>	Human virus
<b>Applications :</b>	WB;ELISA
<b>Target :</b>	SARS-M
<b>Immunogen :</b>	Purified recombinant fragment of SARS-M protein expressed in E. Coli.
<b>Specificity :</b>	SARS-M Monoclonal Antibody detects SARS-M protein.
<b>Formulation :</b>	Subclonal supernatant.
<b>Source :</b>	Monoclonal, Mouse
<b>Dilution :</b>	WB 1:500 - 1:2000. ELISA: 1:10000. Not yet tested in other applications.
<b>Purification :</b>	Affinity purification
<b>Concentration :</b>	1 mg/ml
<b>Storage Stability :</b>	-15°C to -25°C/1 year(Do not lower than -25°C)
<b>P References :</b>	1. Fournel S, Cell Immunol 1993 Aug; 150(1):194-204. 2. J. Virol., Sep 1999; 73: 7441 - 7452.

## Products Images



Western Blot analysis using SARS-M Monoclonal Antibody against SARS-mpm recombinant protein.