

CHD3(C-term) mouse mAb

Catalog No :	YM1249
Reactivity :	Human;Mouse;Rat
Applications :	WB;ICC;IP
Target :	CHD3
Gene Name :	chd3
Human Gene Id :	1107
Human Swiss Prot No :	Q12873
Immunogen :	Purified recombinant human CHD3 (C-terminus) protein fragments expressed in E.coli.
Specificity :	This antibody detects endogenous levels of CHD3 (C-terminus) and does not cross-react with related proteins.
Formulation :	Liquid in PBS containing 50% glycerol, 0.5% BSA and 0.02% sodium azide.
Source :	Monoclonal, Mouse
Dilution :	wb 1:1000 icc 1:400
Purification :	The antibody was affinity-purified from mouse ascites by affinity-chromatography using epitope-specific immunogen.
Concentration :	1 mg/ml
Storage Stability :	-15°C to -25°C/1 year(Do not lower than -25°C)
Observed Band :	260kD
Background :	This gene encodes a member of the CHD family of proteins which are characterized by the presence of chromo (chromatin organization modifier) domains and SNF2-related helicase/ATPase domains. This protein is one of the

components of a histone deacetylase complex referred to as the Mi-2/NuRD complex which participates in the remodeling of chromatin by deacetylating histones. Chromatin remodeling is essential for many processes including transcription. Autoantibodies against this protein are found in a subset of patients with dermatomyositis. Three alternatively spliced transcripts encoding different isoforms have been described. [provided by RefSeq, Jul 2008],

Function :

disease:One of the main antigens reacting with anti-MI-2 positive sera of dermatomyositis.,function:Probable transcription regulator.,sequence caution:Differs from position 1967 onward for unknown reasons.,similarity:Belongs to the SNF2/RAD54 helicase family.,similarity:Contains 1 helicase ATP-binding domain.,similarity:Contains 1 helicase C-terminal domain.,similarity:Contains 2 chromo domains.,similarity:Contains 2 PHD-type zinc fingers.,subunit:Central component of the nucleosome remodeling and histone deacetylase (NuRD) repressive complex. Interacts with TRIM28 and SERBP1. Interacts via its C-terminal region with HBP4.,tissue specificity:Widely expressed.,

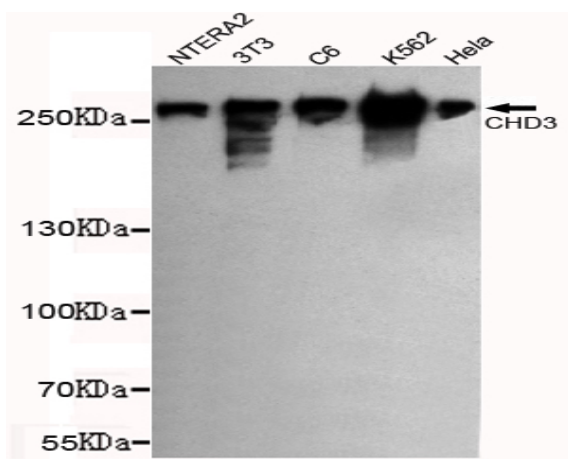
Subcellular Location :

Nucleus, PML body . Nucleus . Cytoplasm, cytoskeleton, microtubule organizing center, centrosome . Associates with centrosomes in interphase and mitosis. .

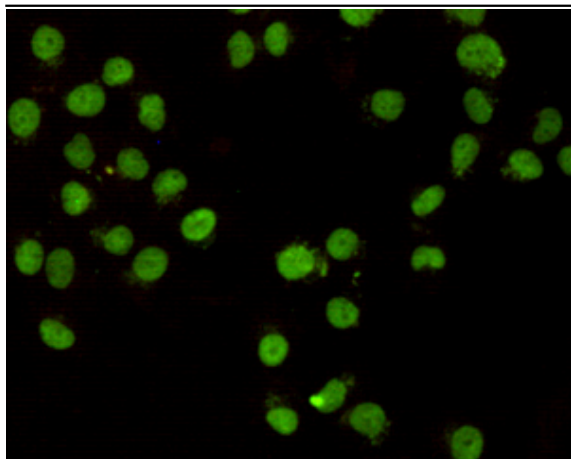
Expression :

Widely expressed.

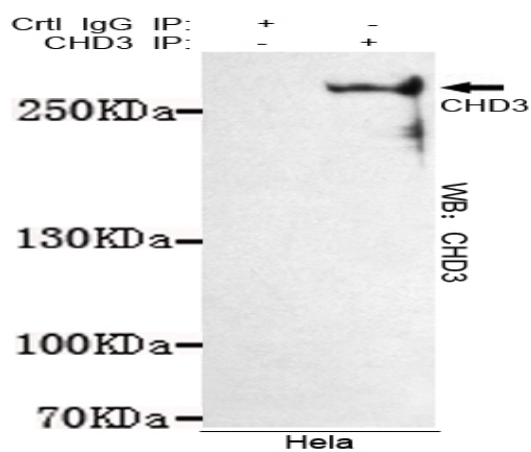
Products Images



Western blot detection of CHD3 (C-terminus) in NTERA2,3T3,C6,K562 and HeLa cell lysates using CHD3 (C-terminus) mouse mAb (1:1000 diluted).Predicted band size: 260KDa.Observed band size: 260KDa.



Immunocytochemistry staining of HeLa cells fixed with -20°C Methanol and using CHD3 (C-terminus) mouse mAb (dilution 1:400).



Immunoprecipitation analysis of HeLa cell lysates using CHD3 mouse mAb.