

## GRK2 mouse mAb

<b>Catalog No :</b>	YM1293
<b>Reactivity :</b>	Human
<b>Applications :</b>	WB
<b>Target :</b>	GRK 2
<b>Fields :</b>	>>Chemokine signaling pathway;>>Endocytosis;>>Hedgehog signaling pathway;>>Glutamatergic synapse;>>Olfactory transduction;>>Morphine addiction
<b>Gene Name :</b>	adrbk1
<b>Human Gene Id :</b>	156
<b>Human Swiss Prot No :</b>	P25098
<b>Mouse Swiss Prot No :</b>	Q99MK8
<b>Immunogen :</b>	Purified recombinant human GRK2 protein fragments expressed in E.coli.
<b>Specificity :</b>	This antibody detects endogenous levels of GRK2 and does not cross-react with related proteins.
<b>Formulation :</b>	Liquid in PBS containing 50% glycerol, 0.5% BSA and 0.02% sodium azide.
<b>Source :</b>	Monoclonal, Mouse
<b>Dilution :</b>	wb 1:500
<b>Purification :</b>	The antibody was affinity-purified from mouse ascites by affinity-chromatography using epitope-specific immunogen.
<b>Concentration :</b>	1 mg/ml
<b>Storage Stability :</b>	-15°C to -25°C/1 year(Do not lower than -25°C)

**Observed Band :** 80kD

**Cell Pathway :** Chemokine;Endocytosis;

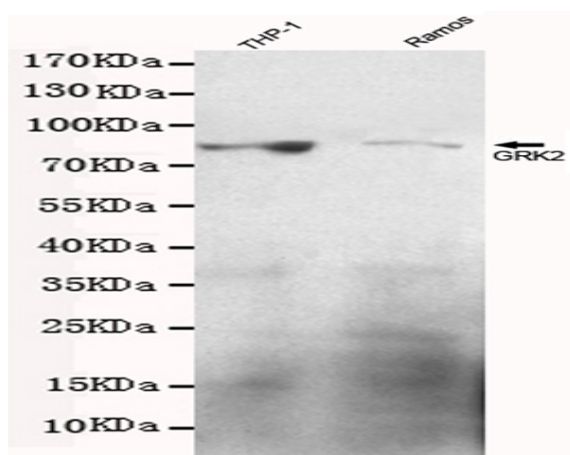
**Background :** The product of this gene phosphorylates the beta-2-adrenergic receptor and appears to mediate agonist-specific desensitization observed at high agonist concentrations. This protein is an ubiquitous cytosolic enzyme that specifically phosphorylates the activated form of the beta-adrenergic and related G-protein-coupled receptors. Abnormal coupling of beta-adrenergic receptor to G protein is involved in the pathogenesis of the failing heart. [provided by RefSeq, Jul 2008],

**Function :** catalytic activity:ATP + [beta-adrenergic receptor] = ADP + [beta-adrenergic receptor] phosphate.,catalytic activity:ATP + a protein = ADP + a phosphoprotein.,function:Specifically phosphorylates the agonist-occupied form of the beta-adrenergic and closely related receptors, probably inducing a desensitization of them.,online information:Beta adrenergic receptor kinase entry,similarity:Belongs to the protein kinase superfamily. AGC Ser/Thr protein kinase family. GPRK subfamily.,similarity:Contains 1 AGC-kinase C-terminal domain.,similarity:Contains 1 PH domain.,similarity:Contains 1 protein kinase domain.,similarity:Contains 1 RGS domain.,subunit:Interacts with GIT1 (By similarity). Interacts with, and phosphorylates chemokine-stimulated CCR5.,tissue specificity:Expressed in peripheral blood leukocytes.,

**Subcellular Location :** Cytoplasm . Cell membrane . Cell junction, synapse, postsynapse . Cell junction, synapse, presynapse .

**Expression :** Expressed in peripheral blood leukocytes.

## Products Images



Western blot detection of GRK2 in Ramos and THP-1 cell lysates using GRK2 mouse mAb (1:500 diluted), with super ECL. Predicted band size:80KDa. Observed band size:80KDa. Exposure time:20S.