

Syntenin mouse mAb

Catalog No :	YM1301
Reactivity :	Human
Applications :	WB
Target :	Syntenin
Gene Name :	sdcbp
Human Gene Id :	6386
Human Swiss Prot No :	O00560
Mouse Swiss Prot No :	O08992
Immunogen :	Purified recombinant human Syntenin protein fragments expressed in E.coli.
Specificity :	This antibody detects endogenous levels of Syntenin and does not cross-react with related proteins.
Formulation :	Liquid in PBS containing 50% glycerol, 0.5% BSA and 0.02% sodium azide.
Source :	Monoclonal, Mouse
Dilution :	wb 1:1000
Purification :	The antibody was affinity-purified from mouse ascites by affinity-chromatography using epitope-specific immunogen.
Concentration :	1 mg/ml
Storage Stability :	-15°C to -25°C/1 year(Do not lower than -25°C)
Observed Band :	32kD
Background :	syndecan binding protein(SDCBP) Homo sapiens The protein encoded by this gene was initially identified as a molecule linking syndecan-mediated signaling to

the cytoskeleton. The syntenin protein contains tandemly repeated PDZ domains that bind the cytoplasmic, C-terminal domains of a variety of transmembrane proteins. This protein may also affect cytoskeletal-membrane organization, cell adhesion, protein trafficking, and the activation of transcription factors. The protein is primarily localized to membrane-associated adherens junctions and focal adhesions but is also found at the endoplasmic reticulum and nucleus. Alternative splicing results in multiple transcript variants encoding different isoforms. [provided by RefSeq, Jul 2008],

Function :

function:Seems to function as an adapter protein. In adherens junctions may function to couple syndecans to cytoskeletal proteins or signaling components. Seems to couple transcription factor SOX4 to the IL-5 receptor (IL5RA). May also play a role in vesicular trafficking. Seems to be required for the targeting of TGFA to the cell surface in the early secretory pathway.,induction:By gamma interferon in melanoma cells.,PTM:Phosphorylated on tyrosine residues.,similarity:Contains 2 PDZ (DHR) domains.,subcellular location:Mainly membrane-associated. Localized to adherens junctions, focal adhesions and endoplasmic reticulum. Colocalized with actin stress fibers. Also found in the nucleus. Identified by mass spectrometry in melanosome fractions from stage I to stage IV.,subunit:Monomer and homodimer (By similarity). Interacts with SDC1, SDC2, SDC3, SDC4, NRXN2, EPHA7, EPHB1, NF2 isoform 1, TG

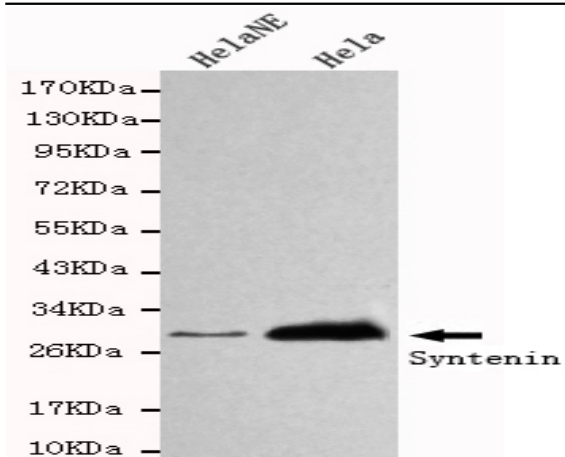
Subcellular Location :

Cell junction, focal adhesion . Cell junction, adherens junction . Cell membrane ; Peripheral membrane protein . Endoplasmic reticulum membrane ; Peripheral membrane protein . Nucleus . Melanosome . Cytoplasm, cytosol . Cytoplasm, cytoskeleton . Secreted, extracellular exosome . Membrane raft . Mainly membrane-associated. Localized to adherens junctions, focal adhesions and endoplasmic reticulum. Colocalized with actin stress fibers. Also found in the nucleus. Identified by mass spectrometry in melanosome fractions from stage I to stage IV. Associated to the plasma membrane in the presence of FZD7 and phosphatidylinositol 4,5-bisphosphate (PIP2) (PubMed:27386966). .

Expression :

Expressed in lung cancers, including adenocarcinoma, squamous cell carcinoma and small-cell carcinoma (at protein level) (PubMed:25893292). Widely expressed. Expressed in fetal kidney, liver, lung and brain. In adult highest expression in heart and placenta.

Products Images



Western blot detection of Syntenin in HeLaNE and HeLa cell lysates using Syntenin mouse mAb (1:1000 diluted). Predicted band size: 32KDa. Observed band size: 32KDa.