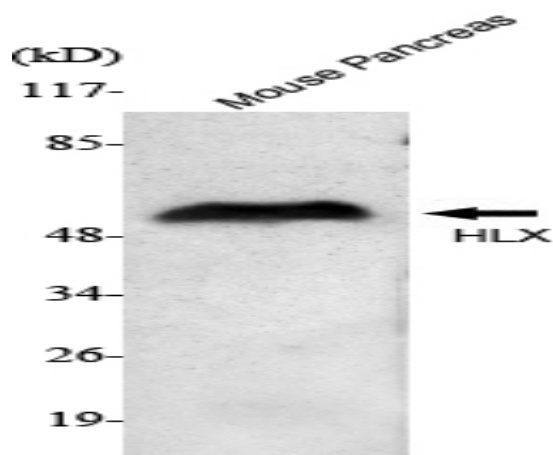


HLX1 Monoclonal Antibody

Catalog No :	YM1043
Reactivity :	Human;Mouse;Rat;Bovine;Dog;Pig
Applications :	WB
Target :	HLX1
Gene Name :	HLX
Protein Name :	H2.0-like homeobox protein
Human Gene Id :	3142
Human Swiss Prot No :	Q14774
Mouse Gene Id :	15284
Mouse Swiss Prot No :	Q61670
Rat Gene Id :	364069
Rat Swiss Prot No :	A0JPN1
Immunogen :	Purified recombinant human HLX1 (C-terminus) protein fragments expressed in E.coli.
Specificity :	HLX1 Monoclonal Antibody detects endogenous levels of HLX1 protein.
Formulation :	Liquid in PBS containing 50% glycerol, 0.5% BSA and 0.02% sodium azide.
Source :	Monoclonal, Mouse
Dilution :	WB 1:1000 - 1:2000. Not yet tested in other applications.
Purification :	Affinity purification

Concentration :	1 mg/ml
Storage Stability :	-15°C to -25°C/1 year(Do not lower than -25°C)
Molecularweight :	51kD
Background :	function:Transcription factor required for TBX21/T-bet-dependent maturation of Th1 cells as well as maintenance of Th1-specific gene expression. Involved in embryogenesis and hematopoiesis.,sequence caution:Translation N-terminally extended.,similarity:Belongs to the H2.0 homeobox family.,similarity:Contains 1 homeobox DNA-binding domain.,tissue specificity:Low level in normal B and T-cells, high level in activated lymphocytes and monocytes. Also found in thymus, tonsil, bone marrow, developing vessels, and fetal brain.,
Function :	function:Transcription factor required for TBX21/T-bet-dependent maturation of Th1 cells as well as maintenance of Th1-specific gene expression. Involved in embryogenesis and hematopoiesis.,sequence caution:Translation N-terminally extended.,similarity:Belongs to the H2.0 homeobox family.,similarity:Contains 1 homeobox DNA-binding domain.,tissue specificity:Low level in normal B and T-cells, high level in activated lymphocytes and monocytes. Also found in thymus, tonsil, bone marrow, developing vessels, and fetal brain.,
Subcellular Location :	Nucleus .
Expression :	Low level in normal B and T-cells, high level in activated lymphocytes and monocytes. Also found in thymus, tonsil, bone marrow, developing vessels, and fetal brain.

Products Images



Western Blot analysis using HLX1 Monoclonal Antibody against Mouse pancreas cell lysate.