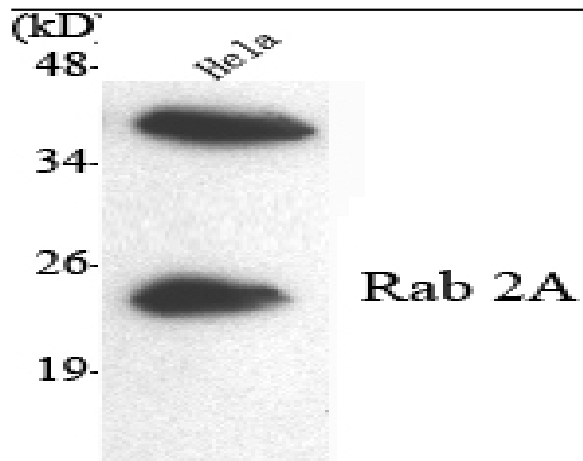


Rab 2A Monoclonal Antibody

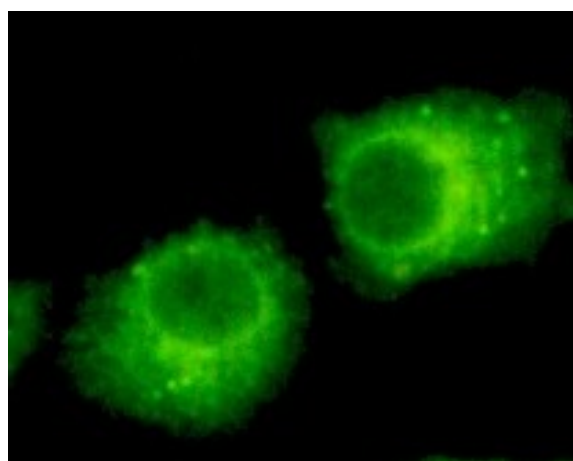
Catalog No :	YM1089
Reactivity :	Human;Mouse;Rat;Bovine;Chicken;Dog;Pig;Zebrafish
Applications :	WB;IF
Target :	Rab 2A
Fields :	>>AMPK signaling pathway
Gene Name :	RAB2A
Protein Name :	Ras-related protein Rab-2A
Human Gene Id :	5862
Human Swiss Prot No :	P61019
Mouse Gene Id :	59021
Mouse Swiss Prot No :	P53994
Rat Gene Id :	65158
Rat Swiss Prot No :	P05712
Immunogen :	Purified recombinant human Rab 2A (C-terminus) protein fragments expressed in E.coli.
Specificity :	Rab 2A Monoclonal Antibody detects endogenous levels of Rab 2A protein.
Formulation :	Liquid in PBS containing 50% glycerol, 0.5% BSA and 0.02% sodium azide.
Source :	Monoclonal, Mouse
Dilution :	WB 1:1000 - 1:2000. IF 1:100 - 1:500. Not yet tested in other applications.

Purification :	Affinity purification
Concentration :	1 mg/ml
Storage Stability :	-15°C to -25°C/1 year(Do not lower than -25°C)
Molecularweight :	24kD
Background :	<p>The protein encoded by this gene belongs to the Rab family, members of which are small molecular weight guanosine triphosphatases (GTPases) that contain highly conserved domains involved in GTP binding and hydrolysis. The Rabs are membrane-bound proteins, involved in vesicular fusion and trafficking. This protein is a resident of pre-Golgi intermediates, and is required for protein transport from the endoplasmic reticulum (ER) to the Golgi complex. Alternatively spliced transcript variants encoding different isoforms have been found for this gene. [provided by RefSeq, Oct 2011],</p>
Function :	<p>function:Required for protein transport from the endoplasmic reticulum to the Golgi complex.,similarity:Belongs to the small GTPase superfamily. Rab family.,subcellular location:Identified by mass spectrometry in melanosome fractions from stage I to stage IV.,subunit:Interacts with PRKCI.,</p>
Subcellular Location :	<p>Endoplasmic reticulum-Golgi intermediate compartment membrane ; Lipid-anchor . Melanosome . Endoplasmic reticulum membrane ; Lipid-anchor . Golgi apparatus membrane ; Lipid-anchor . Cytoplasmic vesicle, secretory vesicle, acrosome . Localized in the Golgi apparatus in the round spermatids and in the acrosome in the elongating spermatid (By similarity). Identified by mass spectrometry in melanosome fractions from stage I to stage IV (PubMed:17081065). .</p>
Expression :	Brain,Skin,

Products Images



Western Blot analysis using Rab 2A Monoclonal Antibody against HeLa cell lysate.



Immunofluorescence analysis of HeLa cells using Rab 2A Monoclonal Antibody.