

RBBP5 mouse mAb

Catalog No :	YM1445
Reactivity :	Human;Mouse;Rat
Applications :	WB;IF
Target :	RBBP5
Fields :	>>Cushing syndrome
Gene Name :	rbbp5
Human Gene Id :	5929
Human Swiss Prot No :	Q15291
Mouse Swiss Prot No :	Q8BX09
Immunogen :	Purified recombinant human RBBP5 protein fragments expressed in E.coli.
Specificity :	This antibody detects endogenous levels of RBBP5 and does not cross-react with related proteins.
Formulation :	Liquid in PBS containing 50% glycerol, 0.5% BSA and 0.02% sodium azide.
Source :	Monoclonal, Mouse
Dilution :	wb dilution 1:1000 icc dilution 1:100. IF 1:50-200
Purification :	The antibody was affinity-purified from mouse ascites by affinity-chromatography using epitope-specific immunogen.
Concentration :	1 mg/ml
Storage Stability :	-15°C to -25°C/1 year(Do not lower than -25°C)
Observed Band :	70kD

Background : This gene encodes a ubiquitously expressed nuclear protein which belongs to a highly conserved subfamily of WD-repeat proteins. The encoded protein binds directly to retinoblastoma protein, which regulates cell proliferation. It interacts preferentially with the underphosphorylated retinoblastoma protein via the E1A-binding pocket B. Three alternatively spliced transcript variants that encode different protein isoforms have been described for this gene. [provided by RefSeq, Jul 2010],

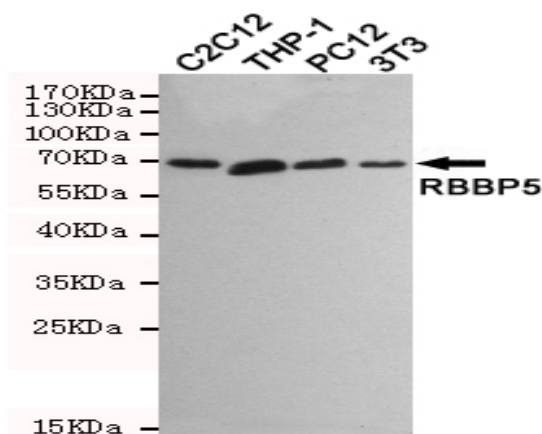
Function : function: Binds preferentially to underphosphorylated retinoblastoma protein., PTM: Phosphorylated upon DNA damage, probably by ATM or ATR., similarity: Contains 6 WD repeats., subunit: Component of the SET1 complex, at least composed of the catalytic subunit (SETD1A or SETD1B), WDR5, WDR82, RBBP5, ASH2/ASH2L and CXXC1/CFP1. Component of MLL-containing complexes (named MLL, ASCOM, MLL2/MLL3 or MLL3/MLL4 complex): at least composed ASH2L, RBBP5, DPY30, WDR5, one or several histone methyltransferases (MLL, MLL2, MLL3 and/or MLL4), and the facultative components MEN1, HCFC1, HCFC2, NCOA6, KDM6A, PAXIP1/PTIP and C16orf53/PA1., tissue specificity: Ubiquitously expressed.,

Subcellular Location : Nucleus .

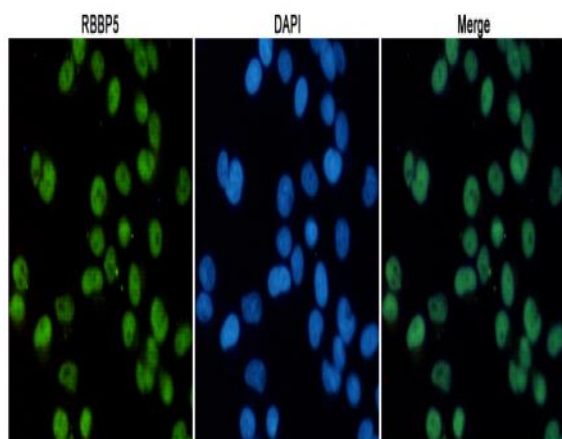
Location :

Expression : Ubiquitously expressed.

Products Images



Western blot detection of RBBP5 in C2C12, THP-1, PC12 and 3T3 cell lysates using RBBP5 mouse mAb (1:1000 diluted). Predicted band size: 70 kDa. Observed band size: 70 kDa.



Immunofluorescent analysis of HeLa cells fixed with 4% Paraformaldehyde and using anti-RBBP5 mouse mAb (dilution 1:100). DAPI was used to stain nucleus(blue).