

TBLR1 mouse mAb

| | |
|------------------------------|--|
| Catalog No : | YM1250 |
| Reactivity : | Human;Mouse |
| Applications : | WB;IHC;ICC |
| Target : | TBLR1 |
| Fields : | >>Wnt signaling pathway |
| Gene Name : | tbl1xr1 |
| Human Gene Id : | 79718 |
| Human Swiss Prot No : | Q9BZK7 |
| Mouse Swiss Prot No : | Q8BHJ5 |
| Immunogen : | Purified recombinant human TBLR1 protein fragments expressed in E.coli. |
| Specificity : | This antibody detects endogenous levels of TBLR1 and does not cross-react with related proteins. |
| Formulation : | Liquid in PBS containing 50% glycerol, 0.5% BSA and 0.02% sodium azide. |
| Source : | Monoclonal, Mouse |
| Dilution : | wb 1:1000 icc 1:200 1:500-1:1000 |
| Purification : | The antibody was affinity-purified from mouse ascites by affinity-chromatography using epitope-specific immunogen. |
| Concentration : | 1 mg/ml |
| Storage Stability : | -15°C to -25°C/1 year(Do not lower than -25°C) |
| Observed Band : | 60kD |

Cell Pathway : WNT;WNT-T CELL

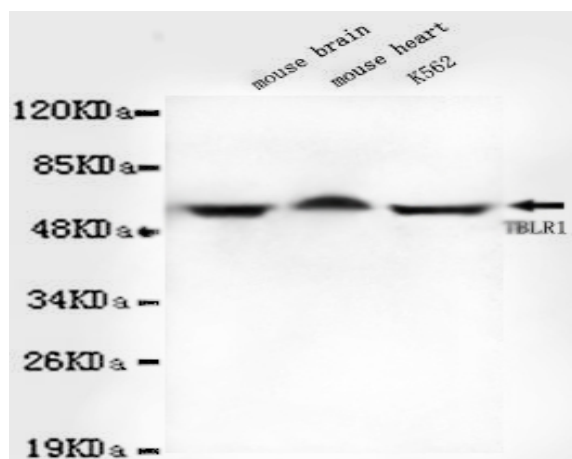
Background : This gene is a member of the WD40 repeat-containing gene family and shares sequence similarity with transducin (beta)-like 1X-linked (TBL1X). The protein encoded by this gene is thought to be a component of both nuclear receptor corepressor (N-CoR) and histone deacetylase 3 (HDAC 3) complexes, and is required for transcriptional activation by a variety of transcription factors. Mutations in these gene have been associated with some autism spectrum disorders, and one finding suggests that haploinsufficiency of this gene may be a cause of intellectual disability with dysmorphism. Mutations in this gene as well as recurrent translocations involving this gene have also been observed in some tumors. [provided by RefSeq, Mar 2016],

Function : domain:The F-box-like domain is related to the F-box domain, and apparently displays the same function as component of ubiquitin E3 ligase complexes.,function:F-box-like protein involved in the recruitment of the ubiquitin/19S proteasome complex to nuclear receptor-regulated transcription units. Plays an essential role in transcription activation mediated by nuclear receptors. Probably acts as integral component of the N-Cor corepressor complex that mediates the recruitment of the 19S proteasome complex, leading to the subsequent proteosomal degradation of N-Cor complex, thereby allowing cofactor exchange, and transcription activation.,PTM:Phosphorylated upon DNA damage, probably by ATM or ATR.,sequence caution:Contaminating sequence. Potential poly-A sequence.,similarity:Belongs to the WD repeat EBI family.,similarity:Contains 1 F-box-like domain.,similarity:Contains 1 LisH domain.,simi

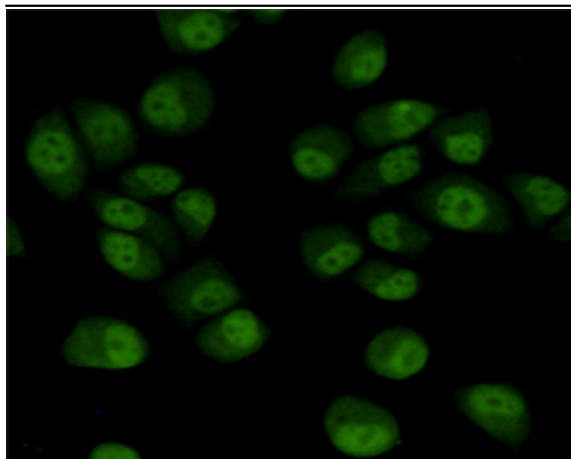
Subcellular Location : Nucleus .

Expression : Widely expressed including the pituitary, hypothalamus, white and brown adipose tissue, muscle and liver.

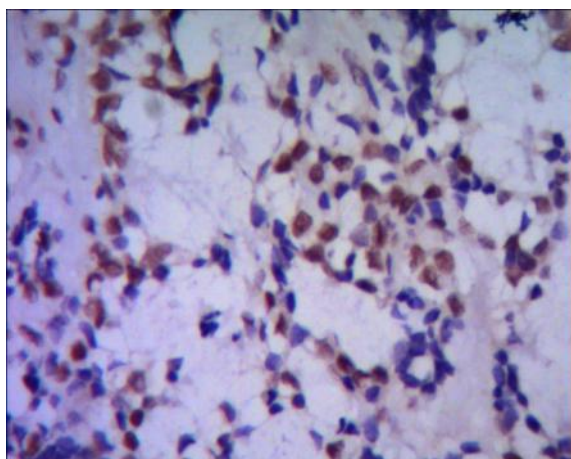
Products Images



Western blot detection of TBLR1 in Mouse brain, Mouse heart and K562 cell lysates using TBLR1 mouse mAb (1:1000 diluted). Predicted band size: 60KDa. Observed band size: 60KDa.



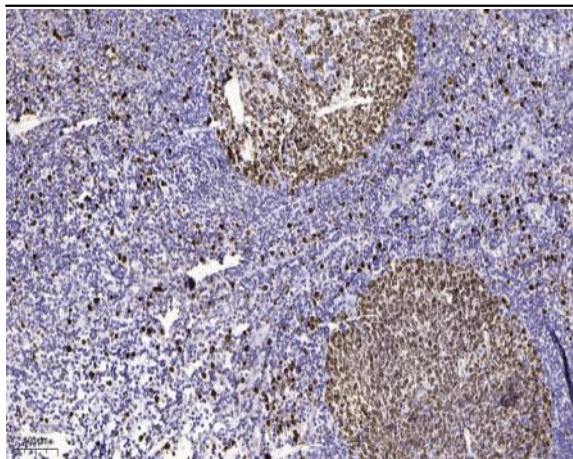
Immunocytochemistry staining of HeLa cells fixed with 4% Paraformaldehyde and using TBLR1 mouse mAb (dilution 1:200).



IHC of paraffin-embedded human breast cancer using anti-TBLR1 mouse mAb diluted 1/500-1/1000



Western blot detection of TBLR1 in HeLa and K562 cell lysates using TBLR1 mouse mAb (1:1000 diluted). Predicted band size: 60KDa. Observed band size: 60Kda.



Immunohistochemical analysis of paraffin-embedded human tonsil. 1, Antibody was diluted at 1:200(4° overnight). 2, Tris-EDTA,pH9.0 was used for antigen retrieval. 3,Secondary antibody was diluted at 1:200(room temperature, 45min).