

eEF2 mouse mAb

Catalog No :	YM1295
Reactivity :	Human
Applications :	WB;IHC;IF;ELISA
Target :	eEF2
Fields :	>>AMPK signaling pathway;>>Oxytocin signaling pathway
Gene Name :	eef2
Human Gene Id :	1938
Human Swiss Prot No :	P13639
Mouse Swiss Prot No :	P58252
Immunogen :	Purified recombinant human eEF2 protein fragments expressed in E.coli.
Specificity :	This antibody detects endogenous levels of eEF2 and does not cross-react with related proteins.
Formulation :	Liquid in PBS containing 50% glycerol, 0.5% BSA and 0.02% sodium azide.
Source :	Monoclonal, Mouse
Dilution :	wb 1:5000 icc 1:200
Purification :	The antibody was affinity-purified from mouse ascites by affinity-chromatography using epitope-specific immunogen.
Concentration :	1 mg/ml
Storage Stability :	-15°C to -25°C/1 year(Do not lower than -25°C)
Observed Band :	95kD

Background :

This gene encodes a member of the GTP-binding translation elongation factor family. This protein is an essential factor for protein synthesis. It promotes the GTP-dependent translocation of the nascent protein chain from the A-site to the P-site of the ribosome. This protein is completely inactivated by EF-2 kinase phosphorylation. [provided by RefSeq, Jul 2008],

Function :

function:This protein promotes the GTP-dependent translocation of the nascent protein chain from the A-site to the P-site of the ribosome.,PTM:Diphthamide is 2-[3-carboxyamido-3-(trimethyl-ammonio)propyl]histidine. Diphthamide can be ADP-ribosylated by diphtheria toxin and by Pseudomonas exotoxin A.,PTM:Phosphorylation by EF-2 kinase completely inactivates EF-2.,similarity:Belongs to the GTP-binding elongation factor family. EF-G/EF-2 subfamily.,subunit:Component of the mRNA surveillance SURF complex, at least composed of ERF1, ERF3 (ERF3A or ERF3B), EEF2, UPF1/RENT1, SMG1, SMG8 and SMG9.,

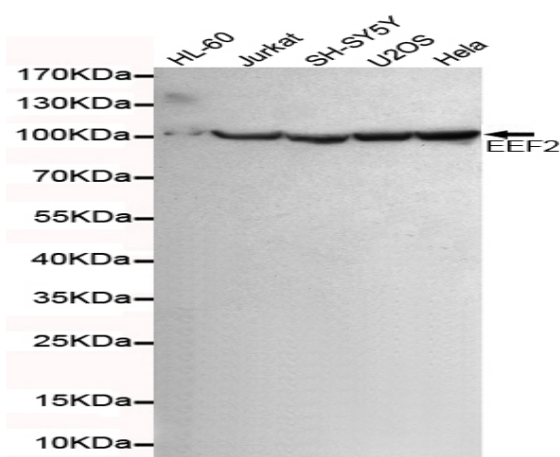
Subcellular Location :

Cytoplasm . Nucleus . Phosphorylation by CSK promotes cleavage and SUMOylation-dependent nuclear translocation of the C-terminal cleavage product. .

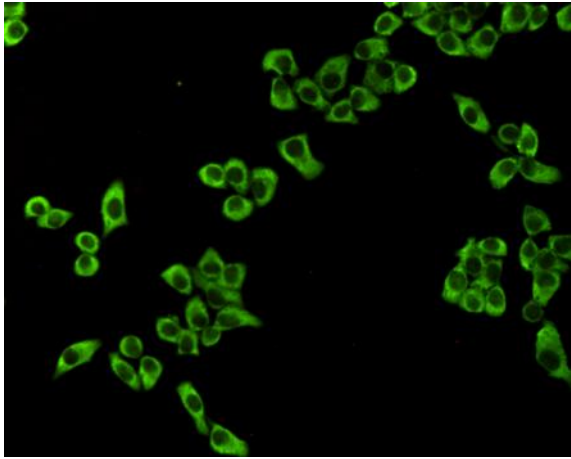
Expression :

Brain,Cajal-Retzius cell,Epithelium,Hepatocyte,Ovary,Periph

Products Images



Western blot detection of eEF2 in HL-60, Jurkat, SH-SY-5Y, U2OS and HeLa cell lysates using eEF2 mouse mAb (1:5000 diluted). Predicted band size: 95KDa. Observed band size: 95KDa. Exposure time: 15s.



Immunocytochemistry staining of HeLa cells fixed with -20°C Methanol and using anti-eEF2 mouse mAb (dilution 1:200).