

## Hsp27 mouse mAb

<b>Catalog No :</b>	YM1348
<b>Reactivity :</b>	Human;Monkey
<b>Applications :</b>	WB;ICC
<b>Target :</b>	Hsp27
<b>Fields :</b>	>>MAPK signaling pathway;>>VEGF signaling pathway;>>Amoebiasis
<b>Gene Name :</b>	hs pb1
<b>Human Gene Id :</b>	3315
<b>Human Swiss Prot No :</b>	P04792
<b>Mouse Swiss Prot No :</b>	P14602
<b>Immunogen :</b>	Purified recombinant human Hsp27 protein fragments expressed in E.coli.
<b>Specificity :</b>	This antibody detects endogenous levels of Hsp27 and does not cross-react with related proteins.
<b>Formulation :</b>	Liquid in PBS containing 50% glycerol, 0.5% BSA and 0.02% sodium azide.
<b>Source :</b>	Monoclonal, Mouse
<b>Dilution :</b>	wb 1:1000 icc 1:300
<b>Purification :</b>	The antibody was affinity-purified from mouse ascites by affinity-chromatography using epitope-specific immunogen.
<b>Concentration :</b>	1 mg/ml
<b>Storage Stability :</b>	-15°C to -25°C/1 year(Do not lower than -25°C)
<b>Observed Band :</b>	27kD

**Cell Pathway :** MAPK\_ERK\_Growth;MAPK\_G\_Protein;VEGF;

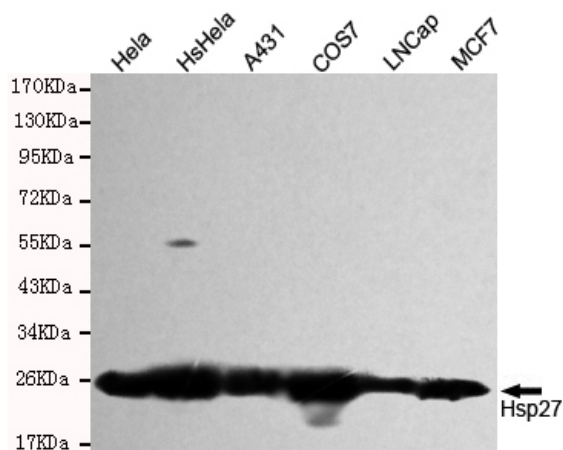
**Background :** The protein encoded by this gene is induced by environmental stress and developmental changes. The encoded protein is involved in stress resistance and actin organization and translocates from the cytoplasm to the nucleus upon stress induction. Defects in this gene are a cause of Charcot-Marie-Tooth disease type 2F (CMT2F) and distal hereditary motor neuropathy (dHMN). [provided by RefSeq, Oct 2008],

**Function :** disease:Defects in HSPB1 are a cause of distal hereditary motor neuropathy type 2B (HMN2B) [MIM:608634]. Distal hereditary motor neuropathies constitute a heterogeneous group of neuromuscular disorders caused by selective impairment of motor neurons in the anterior horn of the spinal cord, without sensory deficit in the posterior horn. The overall clinical picture consists of a classical distal muscular atrophy syndrome in the legs without clinical sensory loss. The disease starts with weakness and wasting of distal muscles of the anterior tibial and peroneal compartments of the legs. Later on, weakness and atrophy may expand to the proximal muscles of the lower limbs and/or to the distal upper limbs.,disease:Defects in HSPB1 are the cause of Charcot-Marie-Tooth disease type 2F (CMT2F) [MIM:606595]. CMT2F is a form of Charcot-Marie-Tooth disease, the most common inherited disorder of

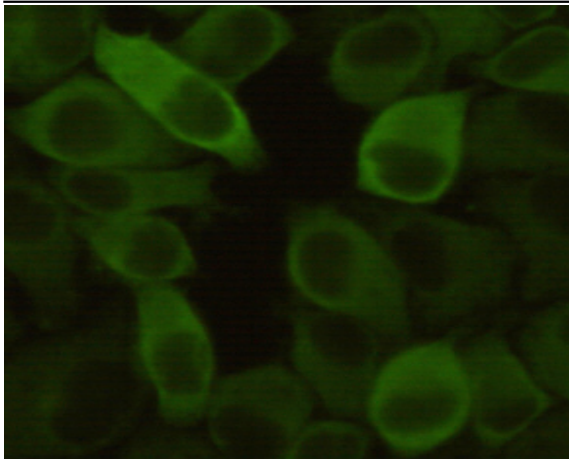
**Subcellular Location :** Cytoplasm . Nucleus . Cytoplasm, cytoskeleton, spindle . Cytoplasmic in interphase cells. Colocalizes with mitotic spindles in mitotic cells. Translocates to the nucleus during heat shock and resides in sub-nuclear structures known as SC35 speckles or nuclear splicing speckles. .

**Expression :** Detected in all tissues tested: skeletal muscle, heart, aorta, large intestine, small intestine, stomach, esophagus, bladder, adrenal gland, thyroid, pancreas, testis, adipose tissue, kidney, liver, spleen, cerebral cortex, blood serum and cerebrospinal fluid. Highest levels are found in the heart and in tissues composed of striated and smooth muscle.

## Products Images



Western blot detection of Hsp27 in HeLa, HsHela, A431, COS7, Lncap and MCF7 cell lysates and using Hsp27 mouse mAb (1:1000 diluted). Predicted band size: 23KDa. Observed band size: 27KDa.



Immunocytochemistry stain of HeLa using Hsp27 mouse mAb (1:300).